

EASTERN REGIONAL POWER COMMITTEE, KOLKATA

MINUTES OF THE 16TH ERPC and 16TH TCC MEETING HELD ON 17TH AND 18TH DECEMBER 2010

Date: 17th and 18th December 2010

Place : Bhubaneswar

Host: *Odisha* (GRIDCO, OPTCL, OHPC, OPGC)

ERPC Chaired by: *Shri M. K. De*, Principal Secretary (Power), Govt. of West Bengal & CMD, WBSEDCL and Chairman, WBSETCL

TCC Chaired by: *Shri Anirban Guha*, Director (RT & IT), WBSEDCL

List of participants is at Annexure-A1 & A2.

ITEM NO.A1: CONFIRMATION OF THE MINUTES OF THE 15TH ERPC MEETING HELD ON 28.09.2010 AT PELLING (SIKKIM)

The minutes of the 15th ERPC meeting held on 28th September, 2010 at Pelling were circulated vide letter no. ERPC/ TCC & Committee/14/2010/6277-6330 dated 02.11.2010.

So far, no comments have been received from constituent members on the minutes of the meeting.

Members may confirm the minutes of 15th ERPC meeting.

Deliberation in the ERPC meeting

Members confirmed the minutes of 15th ERPC meeting.

PART B : FOLLOW UP ACTION ON THE DECISIONS OF PREVIOUS ERPC MEETINGS

ITEM NO.B1: RENOVATION OF ERPC CONFERENCE HALL AND ERPC STAFF QUARTERS (RESIDENTIAL COMPLEX)

(Item No.B1 of the Minutes of 15th ERPC Meeting)

In the last (15th) ERPC meeting it was reported "Civil engineer from POWERGRID visited the ERPC Secretariat. The schedule of work and cost estimate will be placed before the Committee on submission of the report by POWERGRID."

Member Secretary may apprise the present status.

Deliberation in the ERPC meeting

Member Secretary apprised that CPWD having constructed the buildings was approached and the scheme is still being got developed.

Members noted.

ITEM NO. B2: STUDY VISIT TO NORWAY BY ERPC DELEGATES

(Item No.B2 of the Minutes of 15th ERPC Meeting)

In the last (15th) ERPC meeting "PTC informed that CERC is in the process of considering a proposal for capacity building programme for NERPC members out of fund available in Reactive Energy Account of NER.

Members decided to wait for the decision of CERC on utilisation of the fund available in Reactive Energy Account for capacity building programme and discuss the matter in the next ERPC meeting."

CERC vide its order dated 27.09.2010 on "Utilisation of RLDC Reactive energy charge component of Power System Development Funds for the purpose of capacity building" has directed that :

Quote :

"

- (a) The RLDC reactive charges components in the Funds may be utilised for the purpose of capacity building in the respective region as provided in the Grid Code.
- (b) The proposals shall be processed as per the applicable norms of the Managing Committee of the Funds and also in accordance with norms, rules and guidelines of the respective organisations to which the personnel belong.
- (c) Capacity building proposals in a region upto a limit of Rs. two crore per year or 30% of the outstanding balance as at the beginning of the financial year whichever is less will require only approval of respective Regional Power Committee and the proposals beyond this limit will require approval of Commission through Managing Committee."

Unquote :

So far, nominations have received from WBSEDCL (3), POSOCO (2) and CESC (2).

Estimated expenditure per participant : Rs 5 lakh (as per PTC).

Optimum group size : 16 participants in each group (as per PTC)

ERLDC may respond on the following :

- i) Outstanding balance in RLDC reactive energy charges fund as at 1st April, 2010.
- ii) Capacity building programme already approved by ERPC and its estimated cost.

Members may discuss.

Deliberation in the ERPC meeting

It was decided to wait till the finalisation of Conduct of Business Rules (CBR) of Power System Development Fund (PSDF). In the meantime members may send nominations from their respective organisations.

ITEM NO.B3: ERPC ESTABLISHMENT FUND AND ERPC FUND - Submission of Financial Statement (Item No.F3 of the Minutes of 15th ERPC meeting)

In the last (15th) ERPC meeting it was proposed that "financial statement in respect of ERPC Establishment Fund and ERPC Fund shall be placed before ERPC at annual interval. First of such statement shall be placed in the next meeting."

Member Secretary may apprise.

Deliberation in the ERPC meeting

Member Secretary apprised that financial statements are under preparation and will be placed in the next meeting.

Members noted.

ITEM NO.B4: MATTERS RELATED TO STANDING COMMITTEE ON TRANSMISSION PLANNING IN EASTERN REGION (Part-D of the minutes of 15th ERPC meeting)

In the last ERPC meeting, CTU had explained the schemes taken up in the Standing Committee Meeting (SCM) on Power System Planning in Eastern Region, which was held on 20.09.2010. CTU had also apprised the ERPC on the decisions taken by SCM. After the presentation and deliberations, ERPC had decided that it shall ratify the decisions of SCM after confirming that the minutes are in line with the presentation made by CTU.

Minutes were issued on 08.10.2010. Subsequently corrigendum was also issued on 10.12.2010. CTU presented again each scheme along with its decision and its corrigendum. (detailed schemes are shown at Annexure-B)

Therefore, ERPC may consider ratifying the following transmission schemes as part of existing BPTA one by one:

ITEM NO.1.0 : Establishment of New 400 kV sub-station at Jamshedpur of DVC and LILO of one ckt of 400kV Jamshedpur-Baripada D/C line at Jamshedpur S/S (DVC) in lieu of LILO of one ckt. of 400 kV Parulia-Jamshedpur D/C line

- *ERPC ratified the SCM decision.*

ITEM NO.2.0 : ATS for Nabinagar-II TPS (3x660 MW).

- *ERPC ratified the SCM decision.*

ITEM NO.3.0 : Transmission System for IPP Generation Projects in Jharkhand, West Bengal and Orissa

- *ERPC ratified the SCM decision.*

ITEM NO.4.0 : IPPs in Jharkhand & West Bengal and ATS:

- *ERPC ratified the SCM decision.*

ITEM NO.5.0. : Immediate evacuation system for Adhunik, Corporate, Essar and Corporate Phase-I generation projects (under the Scope of Generation Developer)

- *ERPC ratified the SCM decision.*

ITEM NO.6.0 : Common system strengthening for transfer of power from Phase-I generation projects in Jharkhand and West Bengal to NR/WR (Under the scope of PGCIL)

I. Common system strengthening for transfer of power from Phase-I generation projects in

Jharkhand and West Bengal - Part-A :

II. Common system strengthening for transfer of power from Phase-I generation projects in

Jharkhand and West Bengal - Part-B :

III. Private Sector line: In addition to the above work to be undertaken by PGCIL, Dharamjaygarh -Jabalpur 765kV D/C line (2nd line) would be under the scope of private sector. Associated 765kV line bays at Dharamjaygarh and Jabalpur sub-station would be under the scope of POWERGRID.

- *ERPC Ratified the SCM decision.*

ITEM NO.7.0 ATS for power evacuation from Phase-I generation projects in Sikkim/Bhutan:

7.1 Project specific revised dedicated transmission system:

(under the scope of Generation Project Developers)

A. Upto Pooling Station at New Melli/ Kishanganj / Mangan# (proposed at a later date)

B. Upto Pooling Station at Rangpo

7.2 Revised ATS for HEPs in Sikkim/ Bhutan:

(under the scope of PGCIL)

7.2.1 Under the scope of Part-A work

7.2.2 Under the scope of Part-B work,

7.2.3 Under the scope of Part-C work,

7.2.4 In accordance with the above proposals, the revised scope of work under Part-A, Part- B & Part-C would be as following:

Part - A: Transmission System for development of pooling station at Kishanganj and associated transmission works (under the Scope of PGCIL) (By 2011-12, for evacuation of 1300 MW from Sikkim)

Part- B: Transmission System for development of pooling substations within Sikkim and transfer of power to a new pooling station Kishanganj in northern Part of West Bengal/Bihar (under the Scope of PGCIL) (By 2012-13, when additional 1100MW materializes in Sikkim)

Part- C: Transmission System for development for power transfer from Bhutan to NR/WR (under the Scope of PGCIL) (By 2014-15, when Punatsangchu-I (1200MW) comes up in Bhutan)

Deliberation in the ERPC meeting

- CTU informed that two generation projects are being taken to 2nd Phase.
- CTU informed that seven generation projects' evacuation scheme has been finalised.
- It came up that 'Kishenganj' is inappropriate name. Instead 'Karandighi' is proper.
- CTU has agreed to for this changes.
- After CTU presentation and deliberation the *ERPC Ratified the SCM decision* with a suggestion to change the name 'Kishenganj' to 'Karandighi'

ITEM NO.8.0 Proposal for LILO of one circuit of 765Kv Tilaiya UMPP-Balia D/C line at Gaya S/S as part of ATS for Tilaiya UMPP (4000 MW) in Jharkhand

- *ERPC ratified the SCM decision*

ITEM NO.9.0 : Proposal of WBSETCL for Provision of two additional 220kV line bays at 400/220kV Alipurduar S/S of PGCIL for interconnection with the Alipurduar 132kV S/S (WBSETCL) being upgraded to 220kV

- *ERPC ratified the SCM decision*

ITEM NO.10.0 Bussing of the 2nd circuit of 400 KV Jamshedpur-Rourkela D/C line at Chaibasa (PGCIL) S/S.

- *ERPC ratified the SCM decision*

ITEM NO.11.0 : Interim Arrangement for evacuation of power from Teesta-III HEP (1200MW) being developed by Teesta Urja Ltd.

In the Standing Committee meeting held on 20.09.2010, Member (PS), CEA advised to finalise the interim arrangement proposed by Powergrid in a separate meeting between CEA, NHPC, Powergrid, Teesta Urja Ltd, etc.

Government of Sikkim desired the implementation of the arrangement before commissioning of 1st Unit of Teesta-III HEP.

NHPC responded that during 15th ERPC meeting held on 28.09.2010, Energy & Power Department, Sikkim was in favour of LILO as it allows them opportunity to market "free power". LILO has no implication in non-monsoon period as each station is operating much below its capacity. s issue was being examined in their design office at Faridabad.

It was leant that the above meeting was held on 11.11.2010 at Gangtok. Powergrid may please intimate the interim arrangement as finalized during the meeting 11.11.2010.

Members may kindly discuss and decide.

Deliberation in the ERPC meeting

- NHPC expressed that it is not possible to evacuate power from Teesta -III HEP through the existing Teesta-V transmission system. The GIS bus bars, bus coupler and both the feeder breakers are of 2000 Amp rating against the requirement of 3150 Amp rating for such arrangement. This is apart from the other problems with respect to the metering / protection relay settings etc.

Moreover, as per discussion in the Standing Committee meeting held on 20.09.2010, a meeting between CEA, NHPC, PGCIL & Teesta Urja Ltd. to finalise the arrangement, is yet to take place inspite of repeated reminders from NHPC to Powergrid. It was also intimated that the scheme is yet to be approved by the Standing Committee and as such the issue cannot be discussed at this stage.

- Sikkim was more tilted towards proposed LILO arrangements
- It got clarified that the generation will not get affected
- The generation of both the projects will get supplemented
- NHPC is the only constituent whose commercial interest is at stake due to swap of generation between two projects. It will present its case before SCM as and when this proposal is taken up by SCM.

Decision

ERPC shall ratify the SCM decision provided it is to the satisfaction of the NHPC and ERPC Secretariat shall convey the approval of ERPC in consultation with the Chairman, ERPC.

ITEM NO.12.0 : Cross Border Transmission link between India and Bangladesh

On the advice of Member (PS),CEA during the Standing Committee meeting held on 20.09.2010, the detailed scheme would be firmed up after carrying out necessary load flow studies on various scenarios jointly by Powergrid, CEA,WBSETCL and ERLDC on 04.10.2010.

Accordingly, the meeting regarding strengthening of its east side of Eastern Regional grid was held on 04.10.2010 at Powergrid HQ, Gurgaon.

For establishing cross border transmission link between India and Bangladesh as decided in the Standing Committee Meeting on Power System Planning in Eastern Region held on 20.09.2010, following reinforcements was agreed to be considered as regional system strengthening scheme based on the decision of the meeting held on 04.10.2010:

- a) Establishment of 400/0220kV, 2x500 MVA Rajarhat S/ stn. with LILO of Subhasgram -Jeerat 400kV s/c line
- b) Rajarhat- Purnea 400kV D/C line (Triple snow bird) with LILO of one ckt. at Gokarna and other ckt. at Farakka.

In view of above strengthening scheme, the approved Subhasgram-Chanditala 400 kV D/C intra-state line would be connected to the regional Rajarhat sub-station instead of terminating it at Subhasgram. Thus, the 220kV line for off-take of power from Rajarhat would be 400kV Rajahat-Chanditala D/C to be constructed by WBSETCL.

Meanwhile, Powergrid vide letter dated 25.10.2010 intimated that the investment approval for "inter-connection between electrical grids of India and Bangladesh Indian portion" have been accorded by GOI at an estimated cost of Rs.160.32 Crores. The project is scheduled to be commissioned within 24 months from the date of investment approval.

The above schemes would be discussed in the forthcoming Standing Committee meeting on transmission planning and subsequently approved in the ERPC meeting.

This is for information please.

Deliberation in the ERPC meeting

WBSETCL desired that the entire scheme should be approved as a composite scheme and implemented in the same way.

WBSETCL is the constituent whose interest is at stake. It will present its case before SCM as and when this proposal is taken up by SCM.

Decision

ERPC shall ratify the SCM decision provided it is to the satisfaction of the WBSETCL and ERPC Secretariat shall convey the approval of ERPC in consultation with the Chairman, ERPC.

ITEM NO.13.0: TRANSMISSION SYSTEM ASSOCIATED WITH THE ODISHA UMPP (5X800MW) AND PHASE-II IPPs IN ODISHA-PROPOSED BY POWERGRID

Powergrid presented the share allocation of various states from Odisha UMPPs as allocated by MoP is:

- ER (Odisha) -1300MW, NR-1800MW, WR-600MW & SR-300MW
- The schedule of commissioning of the first unit (800MW) is March, 2016 and followed upto March, 2018.
- The generation would be made at 765kV and injected at 765kV Jharsugudha Pooling station for evacuation. The 765kV Jharsugudha bus would be segregated so that 2 units would serve to supply Odisha share in radial mode and the other 3 units would transfer from UMPP to WR/NR in independent manner. The transmission scheme for power evacuation from Odisha UMPP and Odisha phase-II IPPs would be discussed in the next Standing Committee meeting to be held on 28.12.2010.
- Odisha agreed to put forward their observation about the proposed transmission scheme in the Standing Committee meeting.
- OPTCL is the only constituent whose interest is at stake. It will present its case before SCM as and when this proposal is taken up by SCM.

Decision

- ERPC shall ratify the SCM decision provided it is to the satisfaction of the OPTCL and ERPC Secretariat shall convey the approval of ERPC in consultation with the Chairman, ERPC.

ITEM NO.B5: FOLLOW UP ACTION DISCUSSED BY TCC ON THE DECISIONS TAKEN IN PREVIOUS TCC/ERPC MEETINGS

The follow up on the decisions taken in previous TCC/ERPC meetings related to operational, commercial and technical aspects were discussed by TCC yesterday and the gist of the deliberations are placed below:

ITEM NO. B5.1: CONSTITUTION OF A COMMITTEE TO LOOK INTO ISSUES PERTAINING TO GENERATION FROM TALCHER STPS STAGE - I & II
(Item No.B 3.1 of MoM of 15th ERPC meeting)

A Committee comprising of Director (Commercial), GRIDCO, Member Secretary, ERPC, Executive Director (TSTPS), NTPC and one officer of Talcher STPS was constituted to look into issue of coal diversion from Talcher Stage-I to Stage-II.

The committee has recently submitted the report and the same is forwarded to all TCC and ERPC members vide ERPC letter dated 30.11.2010.

Members may note.

Deliberation in the TCC meeting

Members noted and desired to apprise ERPC.

Deliberation in the ERPC meeting

Member Secretary, ERPC briefly apprised the members on the recommendation of the Committee. ERPC members noted the same.

ITEM NO. B 5.2: SYNCHROPHASOR TECHNOLOGY IN EASTERN REGION
(Item No.B3.2 of MoM of 15th ERPC meeting)

Implementation of synchrophasor technology with 25 Nos. of PMUs has been proposed by ERLDC in the 14th ERPC meeting held on 11.06.2010 wherein the scheme along with cost estimate was duly approved by ERPC. The scheme was put up to Task Force of CERC for consideration of funding. The Task Force has approved the scheme with 10 Nos. of PMUs only. ERLDC reviewed the scheme once again and considered that another pilot project with 10 PMUs would not be desirable as similar project with 4 Nos. of PMUs was implemented in Northern Region. For trying out minor applications in the proposed scheme, a critical mass of 25 Nos. of PMUs at an estimated cost of Rs. 18.65 crores would be necessary to gain experience on power system applications using the data from PMU as well as interfacing the PMU data with SCADA / EMS data. Accordingly, ERLDC had appraised in the 15th ERPC meeting and ERPC approved the proposal of ERLDC to submit the proposal once again requesting for review by the Task Force /PSDF Management Committee for consideration of the project with 25 Nos. of PMUs,

The PSDF Management committee is in the process of finalising Conduct of Business Rules and guidelines for approving various schemes under PSDF funding. As soon as these activities are completed, the schemes proposed by ERLDC would be discussed for funding by PSDF.

This is for the information of members.

Deliberation in the TCC meeting

ERLDC proposal is recommended for ERPC approval subject to following conditions:

- i. Total number of PMUs will be 26 (original requirement was 28, out of which 2 will be funded from NRLDC pilot project) and their locations will be identified by ERLDC.
- ii. ERLDC will append the cost benefit analysis for the scheme before it is posed to PSDF, which is likely to have its next meeting in January, 2011.
- iii. The scheme would be taken up for implementation only if it is 100% funded from PSDF.

Deliberation in the ERPC meeting

Committee has taken a note of it and is in agreement with TCC to accept its recommendation and approves the changes to the (previous) proposal.

ITEM NO.B5.3: PROCUREMENT OF SPARE TRANSFORMERS TO MEET THE NEED OF MEMBER STATES

(Item no.B3.5 of MoM of 15th ERPC meeting)

In the last ERPC meeting, followings were decided:

"

- i) Number and rating (s) shall be finalised by ERPC Secretariat in consultation with Powergrid and ERLDC. Its decision shall be ratified in the next ERPC meeting.*
- ii) The ARR of each spare element would be apportioned among all the similar elements in the Eastern Region for the corresponding year.*
- a. The location of putting the spare transformer would be finalised in the next OCC meeting.*

The detailed proposal shall be placed in the next meeting of the Standing Committee on Transmission Planning of Eastern Region. "

The issue was first discussed in 56th OCC meeting (23.11.10), where no consensus could be reached and it was decided to take it up in next OCC meeting, wherein OCC (08.12.10) recommended following:

- a. Number and ratings of spare transformers for States requirement would be:
 - i. 400/220 kV , 2x315 MVA
 - ii. 220/132 kV , 2x160/150 MVA (as may be available)
 - iii. 1x50 MVA, 132/66 kV
 - iv. 132/33 kV, 1x50 MVA
 - v. 220/132 kV, 3x50 MVA (these are to be released from Malda and Birpara substation of Powergrid)

- b. PGCIL would be requested during ensuing TCC meeting to accommodate these spare transformers at their substations and if they agree, they may also decide their locations.
- c. Decision of keeping these transformers in idle charged conditions may be reconsidered by TCC as spare transformers could also be kept in cold condition by oil circulation, thus avoiding no load losses, additional bay, equipment etc.

Members may deliberate and recommend ERPC for ratification.

Deliberation in the TCC meeting

During deliberation, Powergrid agreed to install these spare transformers at their substations within Eastern Region. TCC recommended:

1. Following number and rating of spare transformer is recommended for approval
 - i. 400/220 kV , 2x315 MVA
 - ii. 220/132 kV , 2x160/150 MVA (as may be available)
 - iii. 1x50 MVA, 132/66 kV
 - iv. 132/33 kV, 1x50 MVA
 - v. 220/132 kV, 3x50 MVA (these are to be released from Malda and Birpara substation of Powergrid)
2. The above spare transformers will become part of CTS in Eastern region for use by states. In case Powergrid faces difficulty in getting investment approval in respect of transformer of a particular voltage class (i.e 132/33 kV), they may go ahead with rest of the transformers.
3. PGCIL will install these transformers at their substations in Eastern Region.
4. Powergrid may decide their location and inform ERPC.
5. Powergrid may also decide whether to keep these spare transformers at cold condition or hot condition.

The above recommendations of TCC are referred to ERPC for approval.

Deliberation in the ERPC meeting

After detailed deliberation, ERPC accepted the TCC recommendation and approved the following requirements of spare transformers in Eastern Region:

New Transformers to be procured by Powergrid

1. 400/220kV, 2X 315 MVA
2. 220/132kV, 2x 160/150 MVA(as may be available)
3. 132/66 kV, 1x 50 MVA
4. 132/33kV, 1x 50 MVA

As approved elsewhere by ERPC, Powergrid has to undertake the following schemes, which shall render surplus old (or present) transformer(s). Instead of disposing them

off, these existing transformers would be added to the inventory of spare transformers.

1. 220/132kV, 3x 50 MVA (to be released from Malda (2nos.) & Birpara (1no.) S/Stn.)
2. 220/132kV, 2x100 MVA (to be released from Siliguri (2nos.) S/Stn.)
3. 220/132kV, 2x100 MVA (to be released from Purnea (2nos.) S/Stn.)

Each category of transformer may be treated as a unique proposal, i.e in case Powergrid is unable to get investment approval in respect of transformer of any particular category, it may go ahead with other transformer(s).

Regarding location, Powergrid will install them at their sub-stations in Eastern Region and decide by itself their location, and inform OCC of ERPC about their location (s).

Powergrid is also free to decide as to whether it is to be kept in charged condition or cold condition.

Powergrid may apportion YTC of each category of transformers respectively to the entire population of transformers of the ER of that category.

ITEM NO.B5.4 SUBSTATION EQUIPMENT FOR DISASTER MANAGEMENT / “ERS-SUBSTATION” (Item no.C3.7 of MoM of 15th ERPC meeting)

In the last (15th) meeting “ ERPC approved the Powergrid proposal for procurement of one number 400 kV ERS Sub-Station as a part of disaster management.

Powergrid shall optimise the funding arrangement by exploring grant/ cheap sources.

The ARR shall be apportioned to each 400kV Sub-Stations in Eastern Region”.

Powergrid may respond.

Deliberation in the TCC meeting:

After deliberation TCC recommended to ERPC for procurement of one number of ERS substation by POWERGRID as a part of disaster management for Eastern Region.

Deliberation in the ERPC meeting

ERPC approved TCC proposal for procurement of one number of ERS substation by POWERGRID as a part of disaster management for Eastern Region.

It's YTC shall be apportioned equally to each of the Powergrid's 400 kV sub-stations in ER.

ITEM NO.B5.5 OPERATION OF KAHALGAON STAGE-I & II DURING COAL SHORTAGE CONDITION

(Item no.C1 of MoM of 15th ERPC meeting)

In the last ERPC meeting, it was decided that

"

- *For exploring their options and taking appropriate action, constituent states of Bihar, Jharkhand, Orissa and West Bengal formed a sub-committee comprising of Sh. T. T. Jha, Member (Transmission), BSEB, Sh. C. S. Gupta, Member (Tech), JSEB, Sh. A. C. Mallick, Director (Commercial), GRIDCO and Sh. Anirban Guha, Director (RT), WBSETCL.*
- *CEA may also be approached to look into the implications of specific coal allocation. (action: ERPC Secretariat) "*

Since then CEA has been sent the relevant extracts of the ERPC minutes.

Members of the aforesaid Sub-Committee may respond.

Deliberation in the TCC meeting

Members noted the action taken by ERPC Secretariat. No further development was ascertained by the aforesaid sub-committee.

Deliberation in the ERPC meeting

ERPC took note of the situation.

ITEM NO. B5.6: SPECIAL PROTECTION SCHEME (SPS) FOR ER GRID

(Item no.C2 of MoM of 15th TCC meeting)

In the last (15th) TCC meeting it was concluded that "Apart from above SPS, ERLDC opined that each IPP should also come up with their SPSs (to be funded by IPP) to ensure grid security. ERLDC expressed that logic of SPS could be finalized later on, and requested members to give in-principle approval so that task force on PSDF could be approached.

Member Secretary, ERPC stated that PSDF fund would be operated region-wise and suggested that all schemes forwarded to PSDF should be firm. Members agreed with him and referred this to Protection sub-Committee of ERPC. "

ERLDC has proposed a number of System Protection Schemes with a view to increase the loadability of various flow gates and to relieve the congestion affecting market operation and to ensure security through automations in those corridors where n-1 compliance is not ensured. The issue was discussed in the 14th ERPC meeting held on 11.06.2010 at Manali wherein ERPC gave in-principle approval for the schemes with each scheme costing upto Rs. 1 crore. In the 15th ERPC meeting, ERLDC had put up the schemes for detailed discussion.

ERPC recommended for detailed deliberation of the technical aspects of these schemes in the Protection Committee meeting. Accordingly, 5 Nos. of SPS schemes were included in the agenda of the 8th Protection Committee meeting held on 02.12.2010 at ERPC, Kolkata. ERLDC gave detailed presentation and explained the technical aspects in detail and justification of the schemes. The following SPS schemes were discussed during the 8th Protection Committee meeting :-

- i) SPS for Farakka - Kahalgaon D/C
- ii) SPS for Farakka - Malda D/C
- iii) SPS for Purnea - Muzaffarpur D/C
- iv) SPS for Purnea - Binaguri D/C
- v) SPS for Tenughat - Biharshariff S/C
- vi) SPS for Sterlite Energy Ltd
- vii) SPS for Mejia-B & MPL power stations

All the schemes were appreciated by the constituents due to the advantages for the ER constituents in respect of relieving the congestion, as any congestion in a corridor would lead to levying for congestion @ Rs.5.45/Kwh. Further, increase of loadability of the flow gates would benefit in exporting of surplus power to other regions and above all increase the security levels through automation rather than manual actions in the corridors where n-1 compliance is not satisfied during all times of the day. After detailed discussion, the following schemes were approved by the Protection Committee :-

- i) SPS for Purnea - Muzaffarpur D/C
- ii) SPS for Purnea - Binaguri D/C
- iii) SPS for Tenughat - Biharshariff S/C

In respect of the Special Protection Scheme for 400 kV Farakka - Kahalgaon D/C and 400 kV Farakka - Malda D/C lines, NTPC expressed some reservation. After discussion, the flow gate limits were increased from 750 MW to 800 MW for Farakka - Kahalgaon 400 kV D/C line and from 750 MW to 850 MW for 400 kV Farakka - Malda D/C line in order to reduce the backing down / run-back requirement of Farakka Power station of NTPC. Since the trippings would be very rare, the SPS schemes would be called upon to operate rarely and would save the grid from propagation of disturbances. All the constituents except NTPC have recommended the schemes while NTPC agreed to revert back after discussion in their Corporate office. Accordingly, the schemes may once again be discussed and approved.

In respect of the SPS schemes for IPPs, all the constituents unanimously agreed that each IPP should be allowed to connect to the grid with proper Special Protection Scheme (SPS) so that the security of grid is not endangered due to temporary connection /LILOs of the existing corridors. Accordingly, the scheme for Sterlite and MPL/Mejia B of DVC presented by ERLDC were approved by all the constituents which are to be ratified by the TCC/ERPC.

The proposed schemes for ER constituents would be put up to PSDF Management Committee for funding while the schemes prepared for IPPs would be entirely funded by IPPs. The SPS schemes proposed by ERLDC are enclosed in Annexure-I.

Members may discuss and finalize the scheme.

Deliberation in the TCC meeting

Both NTPC and WBSETCL expressed their observations on the issue. ERLDC was requested to make presentation before ERPC for further consideration.

Deliberation in the ERPC meeting

NTPC representative stated that as conveyed in the last Protection Committee meeting, NTPC has in-principle reservations about the SPS for outage of one ckt. of 400kV Farakka-Kahalgaon or 400kV Farakka-Malda. Outage of one ckts. of a 400kV D/C line is a normal scenario for any transmission system and requirement of a Special Protection Scheme to address such a single contingency was incomprehensible. This reflected some gap in Transmission planning and needed to be addressed. In response to the views of ERLDC, 'this would result in imposition of additional congestion charges', NTPC stated that congestion management through congestion charges was a commercial mechanism and should not be confused with SPS. The SPS's were intended purely for grid security and should not be mixed up with commercial mechanisms.

Further, NTPC stated that another 400kV Farakka-Kahalgaon D/C line is under construction & expected by June, 2011. This will relieve congestion in the area for which SPS was being proposed and therefore, expected to obviate the need for SPS. Planning an SPS for use in this winter alone, when the winter is already half over may not be worthwhile.

In view of the above, NTPC stated that the proposed SPS for outage of one circuit of 400kV Farakka-Kahalgaon & 400kV Farakka-Malda was not justified.

NTPC stated that NTPC's strong reservation about the in-principle need for SPS for the proposed (n-1) contingency may be put on record. Further, in case any scheme is subsequently formulated, it should be clearly specified that the requirement is temporary, as observed in the meeting & also the conditions after which the scheme will be withdrawn. Any scheme formulated should take care of the operational requirements like technical minimum operating level, ramp rates etc. as well as any commercial implications of the operation of the scheme.

GM, ERLDC apprised that the issue of Special Protection Schemes as proposed was deliberated in the TCC meeting wherein, all the constituents except WBPDC and NTPC agreed with the technical aspects of the SPS schemes proposed by ERLDC. ERPC had already given financial approval of any SPS schemes for ER and advised ERLDC to approach PSDF Management Committee for funding. As such, TCC referred the issue to ERPC. GM, ERLDC further emphasized that such schemes would be helpful in order to enhance the transfer capability of Eastern Region, particularly during winter months

when surplus generation are being backed down because of overloading of some of the critical corridors, in addition to ensuring system security under contingencies in such corridors. Although NTPC was not in agreement with the proposals on the ground of backing down of generation at cheaper NTPC stations and the expected augmentation in transmission, it was further emphasized that such Special Protection Schemes (SPS) may be activated only once in a while and would ensure security of the grid, particularly when (n-1) compliance is violated and avoid any widespread disturbance in the grid which may have far-reaching effect on generation.

After detailed discussions, ERPC agreed that system security is of paramount importance and System Operator should have adequate means through automations for ensuring the same. NTPC was also requested to cooperate with the System Operator for ensuring grid security.

Decision

- As the scheme has been suggested by grid operator i.e. ERLDC, ERPC approved each of the SPS proposed by ERLDC as per Annexure-I, subject to the condition that the scheme is financed by PSDF.
- ERLDC will project cost vs. benefit analysis and make it a part of the proposal. The same will also be placed before next ERPC.

ITEM NO.B5.7 VOLTAGE COLLAPSE PREDICTION RELAY (Item no.C8 of MoM of 15th ERPC meeting)

During the last (15th) meeting, ERPC has approved ERLDC proposal for procurement of 10 Nos. of Voltage Collapse Prediction Relays of M/s. A.Eberle costing Rs. 3 crores for 10 Nos. of relays including cost of training abroad. It is to be funded PSDF.

ERLDC had already submitted the proposal to PSDF Management Committee for approving the scheme as well as for funding the project from PSDF. The scheme would be discussed by PSDF Management Committee after finalization of CBR and finalization of guidelines for approving the schemes under PSDF.

This is for the information of members.

Deliberation in the TCC meeting

Members noted.

Deliberation in the ERPC meeting

ERPC noted.

ITEM NO.B5.8 LESS REGISTRATION OF 132 KV MAITHON-JAMTARA TIE FLOW FROM 23.09.2007 TO 03.12.2007

(Item no.C17 of MoM of 15th TCC meeting)

The matter has been deliberated in various ERPC forums. In the 15th TCC meeting, on the suggestion of Member Secretary ERPC, JSEB and DVC agreed to hold a joint meeting at ERPC Secretariat to settle the issue.

ERPC Secretariat has taken up with JSEB and DVC to arrange the meeting between 6th and 10th December 2010 so that the outcome can be placed before next TCC.

In the absence of response from JSEB, the issue could not be discussed and settled.

In the last Commercial Sub-Committee meeting, it was decided to appraise TCC about this matter.

Members may like to discuss and decide.

Deliberation in the TCC meeting:

JSEB assured to finalize a date for the meeting with DVC before the ERPC meeting.

Deliberation in the ERPC meeting

JSEB communicated 18.01.2011 as a date to hold the meeting with DVC at ERPC Secretariat, Kolkata.

PART C ::

ITEM NO.CO: CONFIRMATION OF THE MINUTES OF 15th TCC MEETING HELD ON 27.09.2010 AT PELLING (SIKKIM)

The minutes of 15th TCC meeting were circulated vide letter no. ERPC/TCC & Committee/ 14/2010/6277-6330 dated 02.11.2010.

So far, no comments have been received from the constituent members on the minutes of the meeting.

Members may confirm the minutes of 15th TCC meeting.

Deliberation in the TCC meeting

Members confirmed.

ITEM NO.C1: HIGHLIGHTS OF GRID PERFORMANCE

Highlights and grid performance review for the period August'10 to October'10 including important events are given at Annexure - II.

ERLDC may give a brief presentation on grid performance.

Deliberation in the TCC meeting

ERLDC may present the same before ERPC.

Deliberation in the ERPC meeting

ERLDC made the presentation.

ITEM NO. C.2: SEPARATE METERING FOR KAHALGAON STPS STAGE-I AND STAGE-II

The issue was first raised by ERLDC in 14th Commercial sub-Committee meeting (10.09.10), wherein it was decided that ERLDC would place a detailed agenda in next Commercial sub-committee meeting (CCM). Accordingly, ERLDC came out with a detailed agenda in the next CCM (03.12.10). In that meeting, Member Secretary, ERPC pointed out that NTPC has to conform to the different provisions of IEGC with respect to KhSTPP Stage-I and KhSTPP Stage-II. Therefore, NTPC should place composite proposal for segregation of actual generation of KhSTPP Stage-I and KhSTPP Stage-II in the next OCC meeting for further deliberation.

The next (57th) OCC was held on 08.12.10; however, NTPC was not ready with its proposal. OCC empowered ERLDC and ERPC to firm up the proposal that NTPC may bring before ensuing TCC meeting. Subsequent development would be apprised in the meeting.

Members may discuss.

Deliberation in the TCC meeting

NTPC has proposed to bring a composite proposal for separate metering of Kahalgaon Stage-I and Stage-II. Member Secretary, ERPC and ERLDC in consultation with NTPC will prepare the scheme before next OCC. The scheme will be finalized in the OCC meeting.

TCC recommended that the approved decision of OCC would be ratified in next TCC/ERPC meeting.

Deliberation in the ERPC meeting

Members noted.

ITEM NO. C.3: RESTORATION OF POWER ALLOCATED TO OUTSIDE ER FROM ER ISGS

In the 57th OCC meeting held on 08.12.10, ERLDC pointed out that presently Eastern Region as a whole is not able to meet its net export schedule and is paying for 3-12mu UI on per day basis. Power which is allocated to outside region is routed back to Eastern Region at much higher prices. Therefore, OCC felt that that Eastern Region should place its demand for restoration of the power allocated to outside region from ER ISGS. OCC referred this issue to TCC/ERPC for further deliberation.

ERLDC may give a presentation.

Deliberation in the TCC meeting

ERLDC will make the presentation before ERPC.

Deliberation in the ERPC meeting

ERLDC made a Presentation.

During the presentation it was highlighted that there are a number of occasions when WR had sent its schedule but did not draw and ER has overdrawn. In this way, WR has made profit out of the share allocated to it, out of unallocated share of ISGS in ER.

The concerned members took note of it.

ITEM NO. C4: RELIABILITY OF TRACTION SUPPLY AT VARIOUS LOCATIONS OF EASTERN REGIONAL GRID

The issue of frequent power interruptions at various railway traction substation in Eastern Region was discussed in several OCC meeting. In the 56th OCC meeting held on 23.11.10, it was decided to arrange a special meeting with railway authorities (Eastern and South Eastern Railway) and utilities providing power supply to them. Accordingly, a special meeting was organized on 01.12.10 and it was felt that reliability of traction supply at following substations may be discussed in the ensuing TCC meeting :

i) Jamtara Substation

Jamtara s/stn. of JSEB is only connected to Maithon(DVC) via 132 kV S/C at one end and with Sultangung/Deoghar of Bihar at other end. However, normally the supply is availed from Maithon DVC due to non-availability of power from JSEB end. In future, with the increase in load fed from Jamtara, DVC might put restriction on drawal at Jamtara.

JSEB and DVC may respond.

ii) Kendoposi Substation

Kendoposi grid is connected with JSEB system through only one source which is 132KV S/C Rajkharsawan -Kendposi line. The station is also connected to Joda of OPTCL through 132 kV S/C line. However, with increase in demand at Joda s/stn. of Orissa, there is a general reluctance in closing this line to avoid overloading of 220 /132 kV transformers of Joda. As a result, at the time of outage of 132kV Rajkharsawan -Kendposi lines there is inordinate delay in getting power from Joda (OPTCL) which badly affects the train services, ACC Cement factory and the mining activity of Central Govt. and TISCO at Gua and Noamundi respectively.

OPTCL may respond.

iii) Manique Substation

Voltage of DVC system at Manique grid substation has been observed to be very low on most of the time. Railway authorities are always complaining that they face a lot of difficulties due to this.

DVC may respond.

iv) Chandiposh/Bhalulata substation

TSS at Chandipost/Bhalulata of OPTCL are having "T" connection which needs to be removed through "LILO" arrangement for safe and better operational flexibility.

OPTCL may respond.

Deliberation in the TCC meeting

Each utility was requested to take remedial measures and the same may be discussed in OCC.

Deliberation in the ERPC meeting

Members noted.

ITEM NO. C5: STATUS OF RGMO IN ER - Agenda submitted by ERLDC

As per clause no 5.2(f) of IEGC, thermal and hydro units of ER are expected to operate under Restricted Governor mode w.e.f. 01.08.2010. ERLDC is continuously monitoring the performance based on the data available from SCADA system It is observed that only OHPC applied to CERC for exemption of RGMO operation of their units. JSEB, OPGC, DVC, WBSEDCL, DPL and some stations of WBPDC (Kolaghat TPS, Bandel TPS, Santaldih TPS and Sagardighi TPS) neither implemented RGMO nor applied for exemption of their units from RGMO operation from CERC

The detailed status of the machines on RGMO in Eastern Region is given in Annexure-III.

ERLDC may apprise the TCC.

Deliberation in the TCC meeting

ERLDC will make the presentation before ERPC.

Deliberation in the ERPC meeting

- The response of Teesta unit in RGMO was satisfactory.
- NTPCs response is intermittent.
- OHPC sought an exemption.
- Generating companies had taken a note of it.

ITEM NO. C6: CONGESTION IN BSEB - Agenda submitted by ERLDC

Presently, Biharshariff s/stn. of POWERGRID is having 2 x 315 MVA, 400/220 kV transformers. Both the transformers remain critically loaded because of higher drawal of BSEB at Biharshariff s/stn. The 3rd 315 MVA ICT which is under outage, is expected to be normalized after its repair at site by BHEL. Thus, any outage of one of the transformers will lead to severe overloading even beyond 450 MW at times. The 220 kV Biharshariff - Begusarai line is also commissioned resulting in further drawal by BSEB at Biharshariff s/stn. However, the 220 kV system between Biharshariff - Fatuah - Patna-Khagaul -Arrah is operated under radial mode by feeding radial load of Fatuah from Biharshariff and Khagaul from Patna by keeping 220 kV Fatuah-Patna S/C and Arrah-Khagaul S/C open. The synchronized operation of the aforesaid link would lead to further drawal by Fatwa from Patna side that would provide a relief to the overloading of 315 MVA ICTs of Biharshariff. It is, therefore, proposed that 220 kV 2nd D/C between Fatwa and Khagaul be expedited and the loop between Biharshariff -- Fatuah- Patna - Khagaol be kept closed for a better operation in order to relieve congestion in the Biharshariff ICTs. Further, BSEB may expedite commissioning of the busbar protection scheme at the earliest at 220 kV Biharshariff.

In case of tripping of one 315MVA transformer of Biharshariff, scheme for automatic load shedding to relieve overloading on the only remaining ICT may be commissioned at the earliest.

BSEB may respond.

Deliberation in the TCC meeting

The failed transformer is expected by March 2011. BSEB and Powergrid will make suitable arrangement for prompt load reduction to avoid overloading of existing transformers in Biharshariff till the restoration of failed transformer.

Deliberation in the ERPC meeting

Members noted.

ITEM NO. C7: ANALOGUE TRIGGERING OF DRS - Agenda submitted by ERLDC

It has been observed that in many Substations DR outputs from Numerical relays as well as disturbance recorders are not available/not functioning and are not time synchronized, causing difficulty in analysing tripping events and disturbances. IEGC clause 4.6.3 mandates keeping all recording instruments time synchronized and in working condition and furnishing of the recorded data. However, as a back up to system wide disturbances and to record phenomenon like low frequency oscillation etc. various DR printouts can be made available by enabling the following analogue triggers:

- Under-Frequency & Over-Frequency triggering(e.g. 50.50Hz and 49.00 Hz)
- Under-voltage & over-voltage triggering(e.g. 90% & 110%)
- Under and over current

However, such analogue triggering would lead to recording of a more number of events and as such downloading of the information to PC at intervals is essential. The relay suppliers can be asked to provide polling and scheduler software and these could be installed in PCs so that the events are downloaded after every few minutes.

The matter was reviewed in the 8th Protection Committee meeting held on 2nd Dec'10.

ERLDC may present this case.

Deliberation in the TCC meeting

ERLDC expressed its intention to sensitize higher authority in this regard.

TCC recommends that ERLDC may make the presentation before ERPC.

Deliberation in the ERPC meeting

- ERLDC made a presentation.
- All concerned noted.
- Follow up action to be taken up in Protection sub-committee meeting.

ITEM NO. C8: STATUS OF AUTO-RECLOSER FACILITIES ON IMPORTANT 400KV TRANSMISSION LINES (BOTH CTU & STU) - Agenda submitted by ERLDC

During the 7th Protection sub-committee meeting, ERLDC cited that during the month of April / May, there were partial grid disturbances occurred in ER system. It was observed that not a single case of operation of single phase re-closer was reported. This clearly reflected that the auto re-closer facilities are not functioning or at non-auto mode due to insufficient single phase to ground auto re-close dead time, compressor problem etc. It was impressed upon the need of operation of single phase re-closer to prevent undesired tripping of lines during transient faults. All the constituents were requested to submit the above requisite information within August 2010 in order to assess / analyse the operation of auto re-closer.

Powergrid ER-II submitted a report of the cases of successful auto re-closers successes during the month of May, 2010. Out of the 8 cases of earth fault registered during the month of May, 2010 occurred in different 220kV & 400kV transmission lines, the auto re-close attempted in 5 cases.

It was intimated that, 400 kV Farakka-Jeerat line shall be equipped with new numerical Distance Protection relay with DR within three months.

OPTCL informed that the auto re-close facility is also available at Meramundali and

Mendhasal 400kV S/stn. in Orissa which were not functioning, at present and would be making this facility operational.

The arrangement of auto recloser on 400KV circuit breakers at Tala end would be made operational after consultation with the supplier.

The matter was again discussed in the last PCC meeting on 2nd Dec'10 in which concerned constituent members were requested to take action for early implementation..

TCC members may discuss.

Deliberation in the TCC meeting

- OPTCL confirmed that they have already taken action at Meeramundali substation
- WBSETCL confirmed that their auto reclosure scheme at all 400 kV lines is functioning. However, it raised its apprehension on putting auto reclosure scheme in 400 KV Purulia-Bidhannagar line when Purulia Pumped Storage Plant is in motoring mode. This apprehension was made clear by ERLDC.
- In case of Farakka-Jeerat line, it was assured that the same facility would be available within 3 months time.
- ERLDC impressed upon the constituents for early implementation of the scheme.

This issue was placed before ERPC for further deliberation.

Deliberation in the ERPC meeting

All concerned members took note of above.

ITEM NO.C9: IMPLEMENTATION OF GRID CONNECTIVITY STANDARDS AS PER GOI GAZETTE NOTIFICATION 2007 - Agenda submitted by Powergrid

- a. Replacement of old Distance Protection Schemes with Numerical Distance Protection
- b. Provision of Busbar protection at all substations at 220kV and above

GOI Gazette Notification dated March 9, 2007 regarding Grid Connectivity Standards applicable to the Transmission line & Substation- part - III (3) stipulates as under :

“Two main numerical Distance Protection Scheme shall be provided on all the transmission lines of 220KV and above for all new Substations. Busbar protections shall be provided at all substations at and above 220kV level for all new substations. For existing lines & substations, these shall be implemented in a reasonable time frame.”

Attention of ERPC and the Constituent members are invited towards thrust for replacement of all old Conventional Distance Protection Schemes with Numerical Relays in all 220kV and above lines and to provide / ensure proper functioning of Bus Bar protection Schemes in all Substations having voltage level 220 kV and above, in a targeted time frame.

At present Bus Bar Protection scheme is not available in 220KV Ramchandrapur Substation. Any fault in the 220KV bus is leading to the tripping of the ICTs on Directional Over Current protection and the fault is cleared by the ICTs.

JSEB to install the Bus Bar Protection scheme at Ramchandrapur.

Members may deliberate and provide line and sub-station wise status.

Deliberation in the TCC meeting

WBSETCL and DVC confirmed that they have almost completed replacement of old distance relays with numerical distance protection relay, while the rest state transmission licensees assured to take appropriate measures at the earliest.

JSEB assured to take appropriate measures for early implementation of bus bar protection at Ramchandrapur s/s.

Deliberation in the ERPC meeting

Members noted.

ITEM NO. C10: CONVERSION OF TENUGHAT TPS- BIHARSHARIFF LINE FROM 220KV TO 400KV AND 400KV SWITCHYARD AT TENUGHAT TPS

The existing transmission system for evacuation of Tenughat Power station of JSEB is:

- i) 400kV Tenughat -Biharshariff S/C line
- ii) 400kV Tenughat -Patratu S/C line

Both the above lines are presently charged at 220kV and are being owned by BSEB & JSEB.

In case of tripping of one of the above line, Tenughat TPS faces constraint in evacuation of power from Tenughat TPS particularly when two units of Tenughat TPS run.

In the 15th TCC meeting, TVNL authority intimated that order for 5 bays of 400kV switchyard at Tenughat TPS as well as shifting of bay termination from 220kV Biharshariff (BSEB) to 400kV Powergrid S/stn. was placed on Powergrid to expedite the

construction works at Tenughat and Biharshariff ends. TVNL authority recently intimated that as per agreement 10% of estimated cost i.e. 2.27 Crore along with consultancy fees @ 15% i.e. 34.05 Lakh had been paid to M/s POWERGRID in the month of August,2010. The completion schedule of the project is 24 months.

Powergrid & TVNL may respond.

Deliberation in the TCC meeting

Powergrid informed that land has been identified and the work is under progress. Member Secretary, ERPC requested Powergrid to explore completion of the work at the earliest.

Deliberation in the ERPC meeting

Members noted.

ITEM NO.C11: STATUS OF GENERATING UNITS AND TRANSMISSION LINES UNDER CONSTRUCTION

The status of generating units and transmission lines (both CTU & STU) under construction and likely to be commissioned by 2011-12 is given at Annexure - IV.

Constituents may indicate the present status.

Deliberation in the TCC meeting

Member Secretary, ERPC requested utilities to update the status. Powergrid mentioned that completion of their various lines in West Bengal and Orissa is held up for various reasons.

TCC referred this issue to ERPC for further deliberation.

Deliberation in the ERPC meeting

All constituents were requested to furnish requisite information at least 15 days before the ERPC meeting to enable ERPC Secretariat to compile it and also enable constituent members to take note of construction activities of all upstream and downstream projects.

ITEM NO.C12 : PAYMENT OF UI -- PRESENT STATUS

The status of UI payment for 2010-11 as on 18.11.10 as submitted by ERLDC is enclosed at Annexure-V. As per Hon'ble CERC suo-moto petition no 220/2010 dated 04.10.2010, BSEB has cleared principal outstanding dues for the year 2009-10, delayed payment of UI surcharge for 2009-10 and 2010-11. The detail of principal outstanding UI charges which was receivable from BSEB along with interest is given hereunder:

Amount in Rs Crores

SL NO	PERIOD	PRINCIPAL	INTEREST (As on 21.10.2010)	Total
1	2009-10	61.58	11.20	72.78
2	2010 - 11 (up to week - 28)	(-)13.72	0.51	(-) 13.21
	TOTAL	47.86	11.71	59.57

BSEB had paid an amount of Rs 60.64 Crores. With this the total principal outstanding of BSEB for 2009-10, delayed payment interest amount of UI for 2009-10 and 2010-11 together with principal receivable of 2010-11 up to week - 28 is fully settled. Since BSEB has paid an extra amount of Rs 1.07 Crores, this amount is paid back to BSEB. Out of Rs 59.57 Crores, an amount of Rs 4.16 Crores is paid to the constituents towards interest for the year 2009 -10 & 2010 -11 and the balance amount of Rs 55.41 Crores was replenished as pool balance.

In the last Commercial Sub-Committee meeting, members placed on records the effort made by BSEB in clearing the outstanding principal and interest thereon.

TCC Members may please note.

Deliberation in the TCC meeting

Members noted. ERPC may kindly note.

Deliberation in the ERPC meeting

Members noted.

ITEM NO. C13 : DISTRIBUTION OF INTEREST DUE TO DELAYED PAYMENT OF UI TO THE CONSTITUENTS

As submitted by ERLDC, the total interest amount of BSEB due to delayed payment was Rs11.20 Crores for 2009-10 (Calculated up to 21.10.2010) and Rs51.35 Lakhs for 2010-11(Calculated as on 21.10.2010). The interest amount receivable by various ER constituents on account of delayed payment from BSEB was Rs3.64 Crores for 2009-10 and Rs51.35 Lakhs for the year 2010-11. The sum total of this receivable amount was less than the sum total interest amount paid by BSEB. This was because of the fact that the outstanding principal receivable amount was paid from the UI capped amount. Thus, the excess interest amount was paid back to UI capped amount. Hence the following payments towards interest for 2009-10 and 2010 -11 were paid to the constituents as per the ratio of the receivables the calculation of which is also shown in the table. With this payment, the net interest amount of BSEB for the year 2009-10 calculated up to 21.10.10 and net interest amount for the year 2010-11 calculated up to 21.10.10 are settled.

Constituents	Amount (Rs Lakhs) (2009-10)	Amount (Rs Lakhs) (2010-11)	Amount (Rs Lakhs) Total
JSEB	---	7.57	7.57
DVC	19.99	0.62	20.61
GRIDCO	---	27.58	27.58
WBSETCL	149.31	11.08	160.39
SIKKIM	21.59	1.01	22.60
NTPC	158.87	2.34	161.21
NHPC	14.45	1.15	15.61
TOTAL	364.21	51.35	415.57

Members may please note.

Deliberation in the TCC meeting

TCC Members noted. ERPC may kindly note.

Deliberation in the ERPC meeting

Members noted.

ITEM NO.C14 : DISTRIBUTION OF IRE FOR TRANSACTION BETWEEN ER AND SR FROM 28.05.07 TO 01.07.07 (09 TO 13 WEEK) OF 2007- 08

With reference to the Hon'ble CERC notification No. L-7/25(5)/2003-CERC dated 26.04.2007 wherein Regulations 24 and 42 of the Central Electricity Regulatory Commission (Terms and Conditions of Tariff) Regulations 2004 were amended revising the UI rates effective from 30.04.2007. UPPCL filed a writ petition No. 3014/2007 before the Lucknow Bench of Hon'ble Allahabad High Court when the Hon'ble High Court by its order dated 21.05.2007 stayed the operation of the said notification till the 2nd week of July'07. The Commission thereafter had filed a Civil appeal No. 2907 of 2007 before the Hon'ble Supreme Court against the order passed by the Hon'ble High Court when the Hon'ble Supreme Court by its order dated 02.07.07 has set aside the order passed by the Hon'ble High Court on 21.05.07 and has vacated the interim stay.

Meanwhile, The Hon'ble CERC, in view of the order passed by the Hon'ble High Court had advised vide its order dated 06.06.07 that UI be charged as per the rates applicable prior to 30.04.07. It was also advised that a parallel set of UI account should also be prepared based on the notification dated 26.04.07. Subsequently to the vacation of the interim stay by the Supreme Court, Hon'ble Commission vide its order dated 09.07.07 advised continuation of UI rate as mandated in its notification dated 26.04.07.

As informed by ERLDC, an amount of Rs 1.19 Crores in ER IRE account for transaction between ER and SR for the period from 28.05.07 to 01.07.07 on account of revision of

UI rates applicable prior to 30.04.07 as well as per the notification dated 26.04.07 has been transferred to 'Power Grid Corporation of India Ltd for giving credit to the transmission service charges bill of ER constituents in the weighted average share of ISGS power allocations during the said period. The calculation of weighted average share of each constituent for the said period as well as payable amount is attached at Annexure-VI. With this disbursement of UI on account of rate revision for the period from 28.05.07 to 01.07.07 stands settled.

TCC Members may please note.

Deliberation in the TCC meeting

Members noted. ERPC may kindly note.

Deliberation in the ERPC meeting

Members noted.

ITEM NO.C15 : REACTIVE ENERGY CHARGES - PRESENT STATUS.

The updated position of Receipt/Payment of Reactive Energy Charges in the pool as on 09.11.2010 considering bill up to 31.10.2010 as received from ERLDC is indicated in Annexure-VII.

TCC may please note.

The last Commercial Sub-Committee:

- a) Requested BSEB and WBSETCL to clear their outstanding dues before the ensuing TCC / ERPC meetings.
- b) Decided to place before TCC to consider recommending to ERPC for approval to deduct from the amount receivable by any constituent from any of the pool account and adjust it against the outstanding amount in any other pool account.

TCC may please discuss and approve.

Deliberation in the TCC meeting

1. BSEB requested for a copy of the old bills
2. WBSETCL informed that they have liquidated the amount outstanding against them
3. Proposal to deduct from the amount receivable by any constituent from any of the pool account and adjust it against the outstanding amount in any other pool account was dropped by TCC.

ERPC may kindly note.

Deliberation in the ERPC meeting

Members noted.

ITEM NO.C16 : "IRE POOL" ACCOUNT OF ER WITH SR - PRESENT STATUS

IRE account between ER & SR from 1st to 5th week of 2010-11 & UI amount payable/receivable as per ERPC and as per SRPC A/C is shown in the enclosed Annexure-VIII. As can be seen from the annexure, for the period from 29.03.10 to 02.05.10 (i.e. from 1st Week to 5th Week) total IRE amount payable to SR by ER for week 01 to 05 is Rs1.37 Crores and an amount for disbursement amongst ER constituents to settle fully up to week 5 is Rs4.44 Crores for giving transmission benefits to utilities. This amount would be disbursed amongst ER constituents after reconciliation with SR.

TCC Members may please note.

Deliberation in the TCC meeting

TCC referred the issue to ERPC for detailed deliberation and decision

Deliberation in the ERPC meeting

S.E (Commercial), ERPC informed the house that SR and ER grid are connected via asynchronous HVDC links. Therefore, the frequency of ER and SR grids are different. The UI for inter regional exchanges between ER and SR was calculated using ER frequency. Since ER frequency was almost always higher than SR frequency, the difference of UI between the two regions was receivable by ER, which was passed on to the constituents as transmission credit. This was as per chapter 7 of IEGC (Notification No. L/68(84)/2006-CERC New Delhi, the 14th March, 2006 which came into force from 01.04.06) in vogue during that period.

However, The CERC Indian Grid Code (Amendment) Regulations, 2009 (Notification No-L-1/(2)/2009-CERC dated 30.03.2009) had omitted the chapter 7 on "Inter Regional Exchanges". The latest version of IEGC (Notification No. L-1/18/2010-CERC New Delhi, 28th April 2010) has no provision on this issue.

Taking cue from this, SR has unilaterally discontinued the earlier practice of calculation of UI and ER constituents have been denied a substantial amount of relief on account of this. ERPC Secretariat had already taken up the matter with SRPC vide their letter No-ERPC/COM 2/UI CORR/2010/2416-18 dated 28.07.2010.

The ERPC members after deliberation,

- Concluded that it is unfair to term this drawl as UI, as it is a scheduled.
- It is an important interchange due to implications on grid security of both regions
- There is a need for dialogue between the two regions

- ERPC empowered Member Secretary, ERPC & General Manager, ERLDC to initiate dialogue with their counterparts of SR and try to resolve it.
- If they are unable to resolve, Chairman, ERPC will take up with his counterpart.
- Chairperson, ERPC is authorized to take any decision deemed fit by him. Such actions will be ratified in next ERPC meeting.

ITEM NO.C17 :TRANSFER OF UI (PRINCIPAL & BANK INTEREST) FROM ERLDC UI POOL ACCOUNT TO POWER SYSTEM DEVELOPMENT FUND (PSDF)

Central Electricity Regulatory Commission vide notification No. L-7/14/2010/CERC dated 04.06.2010 notified that the regulation called as Central Electricity Regulatory Commission (Power System Development fund) Regulation 2010. In accordance with above Regulation, Central Electricity Regulatory Commission vide order dated 14.09.2010 has appointed the Managing Committee of PSDF. As per Para 6 of this order, the office bearers of the Managing Committee were notified and notice for the first meeting was issued. First meeting of the Managing Committee was held on 20.10.2010 at National Load Despatch Centre (NLDC), New Delhi.

As per Regulation 15(1) and as decided during the meeting, a current account titled "Power System Development Fund" shall be opened in Indian Bank, Mehrauli Institutional Area, Katwaria Sarai, New Delhi - 110016. Accordingly, the above account has been opened.

Regarding transfer of fund from RLDCs and NLDC to PSDF, it has been decided in the meeting that the amounts lying in the custody of RLDCs and NLDC along with interest earned thereon shall be transferred to PSDF. It was also agreed that the transfer of funds should be out of clear balance after taking into consideration the prior approved expenditure.

As per the records available in ERLDC, the details of principal amount as accumulated on account of Capping and additional UI surcharge (Considering bill up to 17.10.10) as on 31.10.2010 is given below for transfer to Power System Development Fund.

Amount in Rs Crores		
Year	Capping	Surcharge
2007 - 08	50.06	0.00
2008 - 09	121.53	0.00
2009 - 10	34.31	38.36
2010 - 11	9.75	13.15
Total	215.65	51.52

The total amount including capping and surcharge amount comes out to be Rs 267.16 Crores. Out of the above amount Rs 29.81 Lakhs was paid to WRLDC on account of consultancy charges of ERLDC portion for power tracing. In view of above, an amount of Rs 266.86 Crores has been transferred to Indian Bank, MEHRAULI INSTITUTIONAL AREA BRANCH, Katwaria Sarai, New Delhi - 110016 at Power System Development Fund (Account No - 913760147). Moreover an amount of Rs 12.85 Crores in respect of Bank interest has also been transferred to the same account.

TCC Members may please note.

Deliberation in the TCC meeting

Members noted. ERPC may kindly note.

Deliberation in the ERPC meeting

Members noted.

ITEM NO.C18 : POOL BALANCE DUE TO CAPPING/ADDITIONAL UI CHARGE

The details of Pool Balance due to capping and additional UI charge after disbursement to PSDF as intimated by ERLDC are enclosed in Annexure-IX. Thus total amount of Rs9.91 Lakhs is available as capped amount as on date and the total amount of Rs 5.58 Lakhs is also available as additional UI charge as on date.

TCC Members may please note.

Deliberation in the TCC meeting

Members noted.

ERPC may kindly note.

Deliberation in the ERPC meeting

Members noted.

ITEM NO.C19 : OPENING OF LC BY ER CONSTITUENTS FOR UI PAYMENTS

As per the Unscheduled Interchange charges and related matters (Amendment) Regulations, 2010 issued by CERC vide notification No. L-1(1)/2009-CERC dated 28th April, 2010 (effective from 03.05.10)

Quote

All regional entities which had at any time during the previous financial year failed to make payment of Unscheduled Interchange charges including Additional Unscheduled Interchange charges within the time specified in this regulations shall be required to open a Letter of Credit (LC) equal 110% of its average payable weekly UI liability in the previous financial year, in favour of the concerned RLDC within a fortnight from the date these Regulations come into force.....

.....Provided further that LC amount shall be increased to 110% of the payable weekly liability in any week during the year, if it exceeds the previous LC amount by more than 50%.

Unquote

The matter of opening of LC by various constituents has already been discussed in 14th Commercial Committee meeting held on 10.09.10 at ERPC, Kolkata wherein it was decided that LC will have to be opened immediately. GRIDCO, WBSETCL and Sikkim have intimated that they have opened LC. BSEB and JSEB had not yet opened LC. The request of DVC for opening of LC has been examined at ERLDC and they do not require to open LC. The status report for opening of LC is being forwarded to CERC on monthly basis (Annexure-X).

In the last Commercial Sub-Committee meeting, BSEB and JSEB were requested to take immediate action for opening of LC before the ensuing TCC / ERPC meetings.

BSEB and JSEB may please inform the present status.

TCC may like to discuss.

Deliberation in the TCC meeting

TCC referred the issue to ERPC.

Deliberation in the ERPC meeting

BSEB and JSEB informed that they are taking appropriate action.

ITEM NO. C20 : CAPACITY BUILDING PROGRAMME BY ERLDC - UTILISATION OF PSDF.

In its 13th meeting at Kolkata, ERPC had approved an expenditure of Rs36.36 lakhs exclusive of taxes and duties for training of SCADA EMS by M/s. AREVA to be imparted to various constituents of ER. ERPC also approved an additional expenditure of Rs20 lakhs for conducting workshops and seminars on various technical issues such as transmission pricing, power exchange, FGMO, etc. to be funded from Reactive pool fund as mandated in IEGC.

In its 15th meeting at Pelling, Sikkim, ERPC further endorsed the proposal of ERLDC for undertaking the capacity building programmes as mentioned above along with training programmes on Black Start, etc. and authorized ERLDC to go ahead.

ERLDC has already initiated for placement of LOA for undertaking the training programmes by M/s. AREVA. This has been noted by the last Commercial Sub-Committee meeting.

TCC Members may please note.

Deliberation in the TCC meeting

TCC members noted. ERPC may kindly note.

Deliberation in the ERPC meeting

Members noted.

ITEM NO.C21 : NON-RELEASE OF REGULAR PAYMENTS TOWARDS SERVICE CHARGES FOR MAINTENANCE OF EMS/ SCADA SYSTEM FROM CONSTITUENTS.

LTSA (Long term Service Agreement) contract for EMS/SCADA system installed at all control centre (ERLDC, WBSETCL, OPTCL, DVC, JSEB, BSEB and Sikkim) was awarded to M/s Areva India T&D Ltd. on 15th January 2010 by ERLDC for smooth running of the system in coordinated way. As per MOU between ERLDC and constituents, there is provision of advance payment on quarterly basis for each quarter. During the 7th SCADA O & M meeting held at ERLDC, Kolkata, all constituents agreed to adhere to timely payment of maintenance charges. However so far it has been seen that regular payment is not forthcoming within the due dates specially from BSEB and Sikkim. BSEB has made payment for only 2 quarters out of 4 so far. Sikkim has not made any payment at all for all the 4 quarters. Table showing the due dates & the dates when payments is given at Annexure-XI.

Due to non availability of payment from the constituents within due dates, ERLDC finds it very difficult to make payment for all the constituents within time and eventually maintain smooth administration of AMC contract. In view of this, it is proposed that the constituents may opt for either of the following arrangement so that timely payment can be realized and paid to M/s Areva:

Option 1: Open a Letter of credit with an amount equivalent to charges of one quarter.

Option 2: Adjustment of quarterly AMC charges against the receivables of UI etc.

Commercial Sub-Committee, in its last meeting,

- a) Requested BSEB and Sikkim to clear their outstanding dues before the ensuing TCC and ERPC meetings.
- b) Decided to place before TCC to consider recommending to ERPC for approval to deduct from the amount receivable by any constituent from any of the pool account and adjust it against the outstanding amount in any other pool account.

TCC Members may please discuss and approve.

Deliberation in the TCC meeting

TCC referred the issue to ERPC, however, proposal to deduct from the amount receivable by any constituent from any of the pool account and adjust it against the outstanding amount in any other pool account was dropped by TCC.

Deliberation in the ERPC meeting

Sikkim informed that they are taking appropriate action to clear this bill. BSEB informed that there is some issue on performance of AMC contract which is to be taken up in the next meeting of SCADA O&M.

ITEM NO. C22: INDICATION OF CAPACITY CHARGES IN REGIONAL ENERGY ACCOUNT ISSUED BY ERPC - POINT RAISED BY NTPC.

ERPC Secretariat while finalizing the REA indicates the capacity charges payable by the beneficiaries of the central sector generating station in addition to the weighted average percentage share allocation for the month.

NTPC has requested to discontinue with this practice. (Letter received from General Manager (Comml), NTPC is attached in **Annexure-XII**).

The issue was discussed in details in the last Commercial Sub-Committee meeting and it was decided that constituents would appraise their respective TCC members for deliberation in TCC

Members may deliberate and decide.

Deliberation in the TCC meeting

TCC referred this issue to Commercial Sub-Committee meeting for detailed discussion.

Deliberation in the ERPC meeting

Members noted.

ITEM NO.C23: DETAILS OF NON-ISTS LINES APPROVED BY RPC AS BEING USED AS ISTS LINE.

As per CERC, the new methodology of transmission charges sharing would come into effect from 1st January 2011. As per clause 3.12 of the draft procedure for computation of point of connection transmission charges and implementation plan as agreed in the first meeting of the Implementation Committee, RPC would have to submit the list of non-ISTS lines along with YTC (approved by respective SERCs) certified as being used as ISTS by first fortnight of October 2010.

Accordingly, the issue was deliberated at length in the 55th OCC meeting of ERPC held on 19.10.2010. The following decisions were taken in the meeting :

- 1) All non-CTU tie lines based on which weekly UI calculations are made may be treated as ISTS lines.
- 2) The process of identification of non-ISTS lines being used as ISTS would take some more time. Therefore, for the time being, this may be treated as 'NIL' with respect to Eastern Region.
- 3) ERPC may contact other RPCs to keep itself informed of the methodology being followed by other RPCs for ensuring uniformity in approach.

The above decisions were conveyed to Co-ordinator of the Implementation Committee of NLDC.

In this connection, it is pointed out that two meetings of Member Secretaries of the RPCs were held on 12.10.2010 and 15.11.2010 to evolve an uniform methodology for identification of non-ISTS lines being used as ISTS.

In the last Commercial Sub-Committee meeting, it was decided that beneficiary constituents shall identify and furnish the non-ISTS lines being used as ISTS in their respective system. Further, they would also be prepared to furnish YTC of the above lines in consultation with their respective SERCs as and when necessary.

Members may please deliberate.

Deliberation in the TCC meeting

TCC decided to refer the issue to ERPC for detailed deliberation.

Deliberation in the ERPC meeting

1. ERPC made a brief presentation on the result (of the trial run) considered by Validation Committee in its first meeting. From where it is observed for Kahalgaon (Kh) STPS that :
 - a) For Bihar transmission charges for KhSTPS St-I is same as for KhSTPS St-II;
 - b) Bihar is to pay more transmission charges for KhSTPS St-II than NR States.
2. ERLDC made a brief presentation on the methodology for computing transmission charges; it clarified that it is sharing of 'ARR' or YTC of central grid.
3. Members noted that contrary to tariff policy which requires transmission tariff to reflect distance, direction and usage, Bihar is to pay more transmission charges for availing power from Kahalgaon St-II than Northern Regional States.
4. Further, members observed the followings :
 - a) There is an unwritten (deemed) agreement between beneficiaries of KhSTPS St-I and CTU, under which, CTU developed 'Associated Transmission System' (ATS) for evacuation of KhSTPS St-I power and ER States collectively pay its 'ARR' on embedded cost mechanism - a front loaded one. Beneficiaries having already paid more in initial years are deprived to pay low now, implying that this agreement seems to have been set aside. Otherwise, there is no explanation for same charges for KhSTPS St-I and St-II for Bihar.
 - b) The base model was supposed to have been developed for base case covering only LTAs and MTOAs (say 80% of the total load of that typical

peak time, remaining 20% for STOA and UI) and the charge obtained. This charge was to be payable by the STOA and the amount payable by LTA and MTOA would have got reduced by equivalent amount for owning the demand risk. However, the typical load flow has been developed taking into account LTA, MTOA, STOA and even UI anticipated flows. Any deviation (all sort of) is likely to be detrimental for LTA/MTOAs.

During deliberation members suggested that -

- i) As a first step, the date of implementation be postponed to get more time to peruse the new system and explore the measures to improve efficiency of ER States. The Implementation Committee and Validation Committee may be apprised regarding the inconsistency through the members of ER.
- ii) If necessary, all the LILOs in CTU system of ER be got reviewed and the impact of the numbers of LILOs on the ER States' liability be studied.
- iii) The impact of owning dedicated lines for evacuation of ER States' share be got studied. Possibly getting dedicated line will reduce ER States' liability for charges and losses.
- iv) Swapping of their shares from central stations so as to reduce the total Kms to be transmitted - possibly through dedicated lines be got explored.
- v) The impact of State station or Load Sub-station LILOing with CTU system be got studied.

After detailed deliberation, a Committee comprising of a member each from WBSETCL/BSEB/JSEB/Sikkim/OPTCL/DVC is constituted with the following terms of reference :

- a) To get this matter perused from ER States perspective;
- b) To get the appropriate action initiated / followed-up;
- c) To interact with respective State Commissions of ER to evolve a common methodology / strategy for YTC of non-ISTS lines being used from ISTS;
- d) To get examined the usage of non-ISTS lines for declaration as being used as ISTS lines.

The decision of this Committee shall be referred in next ERPC meeting.

ITEM NO.C24: IMPACT OF OPEN ACCESS ON UI MECHANISM.

As per the prevailing CERC Unscheduled Interchange Regulation'2010, a State can only underdraw / inject maximum 10% of the quantum of ERLDC scheduled power to the State.

The ERLDC schedule is getting reduced with permission of open access resulting in limiting the under drawal and over drawal of the beneficiary State. RLDC may schedule separately for the beneficiary without netting the same as composite schedule and without taking away the State beneficiary limitation of UD / OD.

The matter was raised by GRIDCO in 15th ERPC meeting held on 28.09.2010. After deliberation, ERPC referred the issue for discussions in Commercial Sub-Committee meeting.

In the last Commercial Sub-Committee meeting, it was informed by General Manager, ERLDC that the genuine concern of GRIDCO has already been taken note of and been conveyed to NLDC who, in turn, would take it up with CERC for addressing the above issue.

Members may please note.

Deliberation in the TCC meeting

ERLDC made a presentation to TCC. ERLDC was requested to repeat the presentation before ERPC.

Deliberation in the ERPC meeting

ERLDC made their presentation. Appropriate action is being taken up by concerned parties.

ITEM NO.C25: DECLARATION OF COD OF 400 KV D/C MAITHON PG-MAITHON RB TRANSMISSION LINE ASSOCIATED WITH START-UP POWER TO DVC AND MAITHON RB PROJECT.

POWERGRID has declared the COD of 400 KV D/C Maithon PG-Maithon RB transmission line associated with start-up power to DVC and Maithon RB Project with effect from 01.10.2010.

The transmission charges of the line shall be payable by Maithon Power Limited before the synchronization of first unit and thereafter by the respective beneficiaries of Maithon Power Limited.

Members may please note.

Deliberation in the TCC meeting

TCC members noted. ERPC may kindly note

Deliberation in the ERPC meeting

Members noted.

ITEM NO.C26: SCHEDULING OF MEJIA 2 X 500 MW UNITS OF DVC AFTER THE COD -- AGENDA SUBMITTED BY DVC

The Mejia 2 x 500 MW units of DVC are in the process of commissioning and are to be declared commercial. The generation, transmission and distribution of electricity within the command area of DVC is governed by the DVC Act. Further, in accordance with the provision of IEGC, DVC is considered as a notional control area. Mejia Stage-II is located in the command area of DVC. Even though it is linked directly with CTU via 400 KV Mejia-Maithon. Mejia Stage-II, for all practical purposes, is an integral part of DVC system. Hence, the responsibility of scheduling of Mejia Stage-II should lie with DVC. Under the circumstances, DVC intends to schedule the dispatch of Mejia Stage-II units when the station would start its commercial operation. The necessary information exchange with ERLDC and beneficiaries of Mejia Stage-II in respect of scheduling would be coordinated by SLDC, Maithon, DVC. However, beneficiary wise transaction is to be reflected in the monthly REA by ERPC.

Further, it is for kind information if CERC consider the scheduling method otherwise, same will be complied.

Members may please note.

Further, in accordance with the decision of 55th OCC meeting held on 19.10.2010, a joint meeting among DVC, ERLDC and ERPC was held at Mejia on 12.11.2010 wherein it was decided "that the present methodology of treatment of Mejia Phase-II generation shall be continued even after commercial declaration of the units unless CERC directs otherwise. DVC shall, therefore, ensure that all relevant data for Mejia Phase-II shall be preserved to facilitate revision of accounting, if any, with a retrospective date".

Members may please discuss and deliberate.

Deliberation in the TCC meeting

After detailed deliberation it was decided by TCC that the scheduling of Mejia Stage-II, 2 x 500 MW units of DVC would be done by ERLDC.

Deliberation in the ERPC meeting

Members noted.

ITEM NO.C27: VIDEO CONFERENCING FACILITIES WITH SLDCs

General Manager, ERLDC informed that during the recent visit of Shri V.S. Verma, Member, CERC to ERPC and ERLDC, suggestion was made to implement video

conferencing facilities among the ERPC, ERLDC and SLDCs of the Region. The expenditure for the above purpose would be made from the fund available from PSDF. ERLDC requested for in principle clearance of the above proposal for placement to TCC and ERPC.

The proposal was discussed in the last Commercial Sub-Committee meeting and the last OCC meeting, wherein all the constituents agreed with the proposal of ERLDC. It was decided that General Manager, ERLDC would bring out a comprehensive proposal including the cost estimate and place the same in the forthcoming TCC and ERPC meetings.

ERLDC may place a composite proposal.

TCC may please deliberate and decide.

Deliberation in TCC meeting

TCC recommended to ERPC for implementation of ERLDC proposal of video conferencing facilities with SLDCs and ERPC with 100% financing from PSDF.

Deliberation in the ERPC meeting

ERPC accepted TCC recommendation and ERLDC proposal of getting created a video conferencing facility with ERPC and SLDCs subject to the condition that it will be got 100% funded from PSDF. The proposal shall also include ERPC Secretariat.

ITEM NO.C28: METERS/DCD AND ACCESSORIES FOR MALBASE SUB - STATION

ERLDC received a letter from Malbase S/stn. Bhutan regarding non-functioning of DCD. The matter was discussed in the last meeting held at ERPC on 25.10.2010 with ERTS - II, POWERGRID, ERPC and ERLDC wherein it was decided that PTC in coordination with POWERGRID would arrange providing meters to BPC and the cost of such meters/DCD would be borne by PTC. In view of the above mentioned exigencies, it is requested that PTC may take up the matter with POWERGRID for keeping a provision of 2 - 3 nos. of DCDs along with optical cord and Meters (A-Type) as spares for Bhutan system on an urgent basis.

Downloading of meter data and its transmittal to ERLDC is of utmost importance. PTC may be requested to take immediate measures for arranging the above meters with DCDs along with optical cord so that downloading of metered data may be transmitted to ERLDC every week without fail.

In the last Commercial Sub-Committee meeting it was decided that ERPC Secretariat would write to PTC and Tala authority for addressing the issue expeditiously.

In the meeting POWERGRID representative informed that there is only one spare DCD available at present. He requested for approval for procurement of another 25 spare DCDs/Laptops for use in the Eastern Region at a total cost of Rs.12.5 lakhs (Approx.).

After deliberation, it was decided to recommend to TCC for acceptance of POWERGRID proposal for procurement of 25 DCDs/Laptops for Eastern Region at an approximate cost of Rs12.5 lakhs , the cost of which would be apportioned among the beneficiary constituents of the Eastern Region in proportion to the weighted average share allocation.

TCC may discuss and recommend.

Deliberation in the TCC meeting

TCC recommended to ERPC for procurement of 25 DCDs/Laptops for Eastern Region at an approximate cost of Rs 12.5 Lakhs to be shared equally by the beneficiary constituents of Eastern Region.

Deliberation in the ERPC meeting

ERPC accepted TCC recommendation and approved the procurement of 25 DCDs/Laptops by POWERGRID for Eastern Region at an approximate cost of Rs 12.5 Lakhs. Its YTC to be shared by the beneficiary constituents of Eastern Region in the proportion of their share allocation.

ITEM NO.C29: DECOMMISSIONING OF 50 MVAR SWITCHABLE LINE REACTOR INSTALLED IN BARIPADA LINE AT RENGALI S/S FOR SHIFTING OF THE SAME TO BARIPADA

It has been informed by POWERGRID that in the 116th EREB/144th TCC meeting of Eastern Regional Electricity Board held on 14th & 15th November 2006, it was decided to shift 50 MVAR Switchable Line Reactor installed in Baripada (earlier Kolaghat line) line at Rengali to Baripada end of the same line to function as a switchable line reactor.

Accordingly, the commissioning of the reactor has been taken up at war-footing basis by POWERGRID to control the over-voltage at Baripada S/s.

Therefore, POWERGRID has requested for approval of de-commissioning of 50 MVAR Switchable Line Reactor of Rengali S/s for shifting and commissioning of the same in Baripada S/s.

The last Commercial Sub-Committee recommend to TCC for acceptance of POWERGRID proposal.

Members may discuss and approve.

Deliberation in the TCC meeting

POWERGRID withdrew the agenda in the meeting.

Deliberation in the ERPC meeting

Members noted.

ITEM NO.C30: ALLOCATION OF 500 MW POWER FROM KODERMA TPS OF DVC - Agenda submitted by JSEB

Damodar Valley Corporation in course of its capacity addition has set up a 2 x 500 MW power plant at Koderma in the State of Jharkhand. The schedule of the said plant to come in operation was September, 2010. From the said plant only 50 MW power has been allotted to the State of Jharkhand (JSEB) and major power has been allocated to Delhi and the State of Haryana as follows :

Delhi	:	775 MW
Haryana	:	100 MW

The JSEB vide letter no. 255 dated 17.03.2010 requested DVC to enhance the allocation to 500 MW. In place, the DVC responded that they are unable to enhance the allocation as they have entered into agreement with Delhi and Haryana as back as in the year 2006.

Submission :

The JSEB earnestly request that 50% of the generation from Koderma TPS be allotted to Jharkhand as the DVC is setting the plant in the State of Jharkhand. Water, Land and other necessary facilities are being made available by the State of Jharkhand.

Mentionable that the MoP vide notification dated 27.04.2000 has mandated that CPSU can divert power to other region only if the surplus power remains available with it after due allocation of the beneficiary of the hosting region.

In the above back drop JSEB submits that JSEB should be allocated at least 500 MW power from Koderma TPS in place of 50 MW.

TCC members may like to discuss.

Deliberation in the TCC meeting

DVC would examine the issue in the light of DVC Act. The issue would be further deliberated in the OCC meeting.

Deliberation in the ERPC meeting

Members noted.

ITEM NO.C31: STEEP HIKE IN PRICE OF NTPC POWER - Agenda submitted by JSEB

NTPC power tariff has gone up substantially in the recent past. The details are as follows :

STATION	2009-10	2010-11 (Till Sept'10)
Farakka	Rs 2.82	Rs 3.45
Kahalgaon -I	Rs 2.62	Rs 2.85
Kahalgaon-II	Rs 2.60	Rs 3.19
Talcher	Rs 1.86	Rs 2.41
Overall for JSEB	Rs 2.45 per unit	Rs 3.04 per unit

NTPC may like to brief the members about the reasons for substantial rise in price of power supplied by it.

Deliberation in the TCC meeting

- NTPC invited all beneficiaries for scrutiny of records regarding the price of NTPC power
- TCC referred this issue to ERPC for further deliberation

Deliberation in the ERPC meeting

ERPC was briefly apprised of the deliberation in TCC meeting wherein GRIDCO had sought information on pricing of coal from NTPC.

NTPC informed that the matter of increase in price of power has been discussed in the forum earlier also. As already deliberated, NTPC Eastern Region Stations are facing problem of coal shortages causing loss of generation. To meet the gap in coal supply, coal is being arranged through e-auction & import which has resulted in increase in prices of NTPC power. Further, cost of indigenous coal has also increased.

NTPC further informed that, the required data is being furnished along with the bills for further details, NTPC asked the beneficiaries to visit NTPC power station for the records regarding the price of NTPC power.

ERPC decided that this matter will be taken up in next OCC, before which, GRIDCO will send a format for the information sought.

ITEM NO.C32: FIBRE OPTIC CONNECTIVITY IN EASTERN REGION - Agenda submitted by POWERGRID

During the 15th ERPC meeting it was approved that POWERGRID shall establish fibre optic connectivity to some of their substations by laying approximately 1055 kms of OPGW cable. It was further agreed that any thing left can also be considered in

consultation with Member Secretary/Contituents. Based on the discussions during the 15th TCC & 15th ERPC meeting and as recorded in MOM the detail comprehensive scheme for connecting all the upcoming/ existing substations/power stations of ER has been prepared. To ensure this around 2956 kms of OPGW cable is to be installed, out of which approx. 1055 kms of OPGW cable has been approved by 15th TCC & 15th ERPC meeting. The balance 1901 kms of OPGW cable may be approved by ERPC which will ensure the overall connectivity of all the central sector substations.

Further, in order to ensure reliable communication connectivity with Bhutan for power system operation the following is proposed:

The OPGW cable was laid from Siliguri to Bhutan border on Siliguri - Malbase line under ER-ULDC Project and India Border to Tala Power House was laid by BPCL, Bhutan for bringing the data of Tala Power Project to ERLDC, Kolkata. But the data of Chukha Power project, another major generating station in Bhutan, to ERLDC is still on PLCC. Now many Hydro Power Projects and National Load Despatch Centre are coming up in Bhutan. On implementation of NLDC in Bhutan, data exchange shall take place with ERLDC, Kolkata on ICCP. Since the Power generating stations in Bhutan are exporting Power to India and are very important from grid connectivity point of view, it is essential that two physical paths for communication are available between India and Bhutan. It is proposed to connect Bhutan through geographically separate link. Accordingly, OPGW cable is proposed to be laid on Bongaigaon - Gelephu (52 km) line under Eastern Region Microwave replacement Project. Connectivity within Bhutan is being ensured by BPCL.

The initial estimated cost for the above work is approximately Rs 36.0 crores which is proposed to be recovered as tariff to be determined by CERC.

Powergrid may make a presentation.

Members may please deliberate.

Deliberation in the TCC meeting

POWERGRID made a presentation. POWERGRID was requested to make available a copy of the presentation to all the beneficiaries so that the issue could be fruitfully deliberated in the ERPC meeting.

TCC referred the issue to ERPC for deliberation and decision.

Deliberation in the ERPC meeting

PGCIL made a presentation. The beneficiaries did not have sufficient time to go through this proposal and respond. It was decided that the SCADA O&M Committee will go through this proposal and come out with its recommendation. The proposal, if needed, will be considered in the next ERPC meeting.

**ITEM NO.C33: REQUIREMENT OF ADDITIONAL TRANSFORMATION CAPACITY AT
PURNEA SUBSTATION OF POWERGRID
- Additional Agenda submitted by POWERGRID**

At present there are 03 nos of 100 MVA, 220/132 kV transformers at Purnea 220/132 kV substation of Powergrid. These transformers are feeding power to BSEB. Out of the 03 transformers, 2 were commissioned in the year 1986 and 1 no commissioned in the year 2003. As present cumulative loading of these ICTs, it has exceeded 225 MW on several occasions and even touched 250 MW i.e. 83 MW per transformer.

In view of above, it is proposed to replace 2 numbers of 100 MVA transformers (commissioned in 1986) with 2 numbers of 160 MVA transformers in a phased manner which incidentally is also completing economic life.

Members may please deliberate and concur the proposal.

Deliberation in the TCC meeting

- TCC recommended to ERPC for approval of replacement of 2 numbers of 100 MVA transformers (commissioned in 1986) with 2 numbers of 160 MVA transformers at Purnea S/S.
- The released transformers will be used in spare transformers pool.

TCC referred the issue to ERPC for deliberation and decision.

Deliberation in the ERPC meeting

- It was noted that the transformers are more than 20 years old and earn RoE on a base rate of 30% of the original cost whereas its book value is 10%.
- Relevant regulation should prevail.

Decision

- ERPC accepted TCCs recommendation and approved the proposal of Powergrid to replace 2 nos. 160MVA, 220/132kV transformers alongwith its bay equipment at Purnea sub-station.
- The transformers (2x100MVA , 220/132kV) thus released shall be added to the inventory of spare transformer.

PART D: FUNDING OF ERPC SECRETARIAT FOR THE YEAR 2010-11

ITEM NO.D1: ERPC-ESTABLISHMENT FUND FOR THE YEAR 2010-11

Contributions have received from all member organisations except from Tata Power Company Ltd. (TPCL). Vide letter dated 15th November,2010 TPCL has been requested to send their contribution which is still awaited.

This for information of members.

Deliberation in the ERPC meeting

Members noted.

ITEM NO.D2: ERPC FUND FOR THE YEAR 2010-11

Contributions have received from all member organisations except from Tata Power Company Ltd. (TPCL). Vide letter dated 15th November,2010 TPCL has been requested to send their contribution which is still awaited.

This for information of members.

Deliberation in the ERPC meeting

Members noted.

PART E :

ITEM NO.E1 :TRAINING PROGRAMME ON “BUILD & MANAGE DISTRIBUTION NETWORK WITH RELIABILITY & QUALITY”

- Proposal submitted by CESC

CESC has submitted a proposal on training programme on “ Build & Manage Distribution Network with Reliability & Quality”. The programme is comprised of two modules, one for 5 days in Kolkata and the other for 4 days in Singapore. Cost of 5 days module in Kolkata is Rs50000 and that for 4 days module in Singapore is Rs1.50 lakh (all inclusive).

CESC may give a presentation.

Deliberation in the ERPC meeting

It was decided to take up this agenda once CBR of PSDF is finalized.

ITEM NO.E2 : FINALISATION OF VENUE AND TENTATIVE DATE OF THE NEXT COMMITTEE MEETING

The roster approved in the first ERPC meeting held in Kolkata on 25.05.2006 is given below :

Sl. No.	Host Organisation
1.	WEST BENGAL
2.	DVC
3.	NHPC
4.	PGCIL
5.	SIKKIM
6.	MEMBER, IPP

7.	MEMBER, TRADER
8.	ORISSA
9.	JHARKHAND
10.	BIHAR
11.	NTPC

In the last (15th) ERPC meeting the turns of Orissa and PTC were swapped as Orissa had expressed its willingness to host the next meeting (16th).

Now, it is the turn of PTC to host the next meeting, for which Members may decide tentative date and venue.

Deliberation in the ERPC meeting

PTC proposed to host the next meeting in Jaipur during March 2011.

It was decided that PTC shall host next TCC and ERPC meetings at Jaipur on 16th and 17th March 2011 respectively

The meeting ended with vote of thanks to the Chair.

LIST OF PARTICIPANTS IN THE 16TH ERPC MEETING

Date: 18.12.2010

Venue: Hotel, Mayfair Lagoon, Bhubaneswar

Name of the Constituent / Organisation	Sl. No.	S/Shri Name	Designation	
WEST BENGAL A) WBSSEDCL	1.	M.K. DE	Chairperson, ERPC & Principal Secretary (Power), Govt. of West Bengal & CMD, WBSSEDCL & Chairman, WBSETCL	
	2.	A.GUHA	Director (RT& IT)	
	3.	M.S. PAL	Chief Engineer (PTR)	
	4.	P.BANERJEE	Divisional Engineer	
B) WBSETCL	5.	A.C.SARKAR	Managing Director	
	6.	A. KARMAKAR	Supdt. Engineer (E)	
	7.	D.CHAKRABORTY	Chief Engineer, CPD	
	8.	S.NAG	Chief Engineer	
C) WBPDC	9.	Dr. K. GUPTA	Managing Director	
	10.	R.BOSE	Director (O & M)	
D) CESC	11.	S.PAL	Manager(System Control)	
	12.	B.B.CHAKRABORTY	Vice President (SO)	
DPL	13.	M.MAJUMDAR	Managing Director	
	BIHAR BSEB	14.	T.T.JHA	Member (Trans)
15.		R.P.CHOUDHURY	Chief Engineer	
16.		RAKESH	EEE /Interstate	
17.		S.AHMED	ESE, SLDC/ULDC	
JHARKHAND JSEB	18.	M.K.VERMA	EEE (Trans)	
	19.	S.R.SINGH	EEE	
ORISSA (A) OPTCL & GRIDCO	20.	HEMANT SHARMA	Managing Director	
	21.	K.K. NATH	Director (Engg.)	
	22.	S.K.RATH	Director-HR	
	23.	P.K.BEHURA	Sr. General Manager (Power System)	
	24.	N.R.MANDHATA	Sr. General Manager (CP)	
	25.	J.P.DAS	Chief General Manager (O & M)	
	(B) OHPC/OPGC	26.	S.K.PATTANAYAK	Director (Finance)
		27.	S.C.DAS	Manager (E)
		28.	D.K.SAHU	Sr.General Manager (E)
		29.	B.R.MAHAPATRA	Director
	© GRIDCO	30.	A.C.MALLICK	Director (Commercial)
31.		J.K.DAS	Sr. General Manager (PP)	
32.		S.K.CHOUDHURY	Additional General Manager (PP)	
33.		L.MAHAPATRA	Additional General Manager (PP)	
GOVT. OF SIKKIM	34.	P.B.SUBBA	Chief Engineer	
	35.	P.LEPHE	Assistant Engineer	
	36.	D.KHAREL	Supdt. Engineer (E & P)	
DVC	37.	A.NAYAK	Chief Engineer (CLD)	
	38.	B.K.CHAKRABORTY	Director (System)	
CEA	39.	S.M.DHIMAN	Member (GO & D)	
	40.	K.N.GARG	Chief Engineer (GM)	
	41.	S.N.KAYAL	Director	
	NHPC	42.	M.K.RAINA	Executive Director (O & M)
43.		RAKESH	Executive Director	
44.		S.KHATUA	Chief Engineer	
45.		R.RAINA	Chief Engineer (Comml.)	

POWERGRID	46.	R.P.SINGH	Executive Director /ER-II
	47.	S.SEN	General Manager (O & M)
	48.	J.DAS	Chief Manager (OS)
	49.	M.C.SAHU	Additional General Manager
	50.	K.SARKAR	Additional General Manager
	51.	M.K.AGARWAL	Chief Manager (PE & SM)
	52.	S.K.SINGH	Chief Manager (OS)
	53.	K.SARKAR	Addl. General Manager (OS)
	54.	A.S KUSHWAHA	Addl. General Manager (O &M)
	55.	A.K.VERMA	Dy. General Manager (Comml.)
NTPC	56.	U. P. PANI	Regional Executive Director (ER-I)
	57.	K.K.SHARMA	Regional Executive Director, ER-II
	58.	S.SEN	General Manager (O &M)
	59.	R.K.PAL	General Manager (OS), ER-II
	60.	S.K.KAR	Addl. General Manager (Comml)
	61.	H.PANDA	Addl. General Manager (OS)
	62.	K.K.SINHA	Dy.General Manager (Comml.)
	63.	A.BASU ROY	Dy.General Manager (Comml.)
ERLDC	64.	P. PENTAYYA	General Manager , POSOCO
	65.	P. MUKHOPADHYAY	DGM
	66.	G.MITRA	DGM
	67.	S.KONAR	Manager
PTC	68.	S. MEHRA	Executive Vice President
ADHUNIK POWER & NATURAL RESOURCES Ltd.	69.	M.K.RAY	Advisor
MONNET POWER	70.	M.SHARAN	Vice President
ERPC	71.	A.K.RAMPAL	Member Secretary
	72.	A.K. BANDYOPADHYAY	Superintending Engineer (Oprn.)
	73.	J. BANDYOPADHYAY	Superintending Engineer (Comml.)
	74.	B.SARKHEL	Superintending Engineer (PS)
	75.	S.M.JHA	Executive Engineer
	76.	G.GHOSH	Executive Engineer
	77.	S.PAUL	Assistant Director-I

ANNEXURE – A2

LIST OF PARTICIPANTS IN THE 16TH TCC MEETING

Date: 17.12.2010

Venue: Hotel, Mayfair Lagoon, Bhubaneswar

Name of the Constituent / Organisation	Sl. No.	Name S/Shri	Designation
WEST BENGAL A) WBSEDCL	1.	ANIRBAN GUHA	Chairperson, TCC & Director (RT & IT)
	2.	M.S. PAL	Chief Engineer / PTR
	3.	P.BANERJEE	Divisional Engineer
B) WBSETCL	4.	A.C.SARKAR	Managing Director
	5.	D.CHAKRABORTY	Chief Engineer, CPD
	6.	S.NAG	Chief Engineer
C) WBPDCCL	7.	R. BOSE	Director (O & M)
D) CESC	8.	S.PAL	Manager (System Control)
	9.	B.B.CHAKRABORTY	Vice President (SO)
BIHAR BSEB	10.	T.T. JHA	Member (Trans)
	11.	R.P.CHOUDHURY	Chief Engineer
	12.	RAKESH	EEE /Interstate
JHARKHAND A) JSEB	13.	S.AHMED	ESE, SLDC/ULDC
	14.	M.K.VERMA	EEE (Trans)
TVNL	15.	S.R.SINGH	EEE
ORISSA (A) OPTCL	16.	K.K. NATH	Director (Engg.)
	17.	P.K.BEHURA	Sr. General Manager (Power System)
	18.	N.R.MANDHATA	Sr. General Manager (CP)
	19.	K.M.PARIDA	Sr.General Manager
	20.	R.C.MISHRA	Sr.General Manager
	21.	J.P.DAS	Chief General Manager (O &M)
OHPC/OPGC	22.	S.K.PATTANAYAK	Director (Finance)
	23.	S.C.DAS	Manager (E)
	24.	D.K.SAHU	Sr.General Manager (E)
GRIDCO	25.	A.C.MALLICK	Director (Commercial)
	26.	J.K.DAS	Sr. General Manager (PP)
	27.	B.R.MAHAPATRA	Director
GOVT. OF SIKKIM	28.	P.B.SUBBA	Chief Engineer
	29.	P.LEPHE	Assistant Engineer
	30.	D.KHAREL	Supdt. Engineer (E & P)
DVC	31.	A.NAYAK	Chief Engineer (CLD)
	32.	B.K.CHAKRABORTY	Director (System)
CEA	33.	M.K.MEHANDATA	D/M(GO & D)
	34.	K.N.GARG	Chief Engineer (GM)
	35.	S.N.KAYAL	Director
	36.	A.WANKHEDE	General Manager
NHPC	37.	M.K.RAINA	Executive Director (O & M)
	38.	RAKESH	Executive Director
	39.	S.KHATUA	Chief Engineer
	40.	R.RAINA	Chief Engineer (Comml.)

POWERGRID	41.	R.P.SINGH	Executive Director /ER-II
	42.	S.SEN	General Manager (O & M)
	43.	J.DAS	Chief Manager (OS)
	44.	M.C.SAHU	Additional General Manager
	45.	M.K.AGARWAL	Chief Manager (PE & SM)
	46.	S.K.SINGH	Chief Manager (OS)
	47.	K.SARKAR	Addl. General Manager (OS)
	48.	A.S KUSHWAHA	Addl. General Manager (O &M)
	49.	A.M.PAVGI	Addl. General Manager
	50.	A.K.VERMA	Dy. General Manager (Comml.)
NTPC	51.	U. P. PANI	Regional Executive Director (ER-I)
	52.	K.K.SHARMA	Regional Executive Director, ER-II
	53.	R.K.PAL	General Manager (OS), ER-II
	54.	S.K.KAR	Addl. General Manager (Comml.)
	55.	H.PANDA	Addl. General Manager (OS)
	56.	K.K.SINHA	Dy.General Manager (Comml.)
	57.	A.BASU ROY	Dy.General Manager (Comml.)
	58.	S.K.SKAR	Dy.General Manager
ERLDC	59.	P. PENTAYYA	General Manager , POSOCO
	60.	P. MUKHOPADHYAY	DGM
	61.	G.MITRA	DGM
	62.	S.KONAR	Manager
ADHUNIK POWER & NATURAL RESOURCES Ltd.	63.	S.B. AGARWAL	Director
	64.	M.K.RAY	Advisor
MAITHON POWER LTD.	65.	P.CHORGADE	CEO
BHUTAN/BPC	66.	S.DORJI	SE
	67.	L.DORJI	Head (O& M)
ERPC	68.	A.K.RAMPAL	Member Secretary
	69.	A.K. BANDYOPADHYAY	Superintending Engineer (Oprn.)
	70.	J. BANDYOPADHYAY	Superintending Engineer (Comml.)
	71.	B.SARKHEL	Superintending Engineer (PS)
	72.	S.M.JHA	Executive Engineer
	73.	G.GHOSH	Executive Engineer
	74.	S.PAUL	Assistant Director-I

ITEM NO.1.0 : Establishment of New 400 kV sub-station at Jamshedpur of DVC

Transmission Scheme approved in Standing Committee Meeting

- **LILO of one ckt of 400kV Jamshedpur-Baripada D/C line at Jamshedpur S/S (DVC)**

ITEM NO.2.0 : ATS for Nabinagar-II TPS (3x660 MW).

Transmission Scheme approved in Standing Committee Meeting

- **Nabinagar-II – Gaya 400kV D/C line with Quad moose conductor**
- **Nabinagar-II – Patna 400kV D/C line with Quad moose conductor**
- **Additional 1x1500MVA, 765/400kV ICT at Gaya.**

ITEM NO.3.0 : Transmission System for IPP Generation Projects in Jharkhand, West Bengal and Orissa

3.1 IPPs in Jharkhand & West Bengal and ATS: (Under generation developer)

SI No	Projects	Developer/Applicant	Time Frame	Ins. Cap (MW)	LTOA (MW)	NR	Allocation(Mw)			Total
							WR	ER		
A Jharkhand Projects										
1	Adhunik	Adhunik Power & Natural Resources Ltd.	Jan-12	540	450	200	50	200		450
2	Corporate	Corporate Power Ltd	Sept-13	540	480	240	240			480
3	ESSAR	Essar Power (Jharkhand) Ltd.	Mar-13	1200	1100	400	400	300		1100
			Subtotal	2280	2030	840	690	500		2030
B West Bengal Projects										
		WBSEDCL (West Bengal State Electricity Distribution Company Ltd.)	2013-14	1000	1000	600	400	-		1000
			Total	3280	3030	1440	1090	500		3030

3.1.1 Immediate evacuation system for Adhunik, Corporate, Essar and Corporate Phase-I generation projects

Transmission Scheme approved in Standing Committee Meeting

- LILO of the one ckt. of 400kV Maithon- Jamshedpur D/C at Adhunik for start up power for first unit
- The LILO arrangement would be temporary only for start up power for first unit and would be withdrawn after completion of 400kV Adhunik- Jamshedpur (PG) D/C line.

Corporate(540 MW) – CoD in Sept.,2013

- Corporate – Jharkhand Pooling Station 400kV D/C line

Essar(2x600MW) –CoDs in March, 2013 and Sept.,2013

- Essar – Jharkhand Pooling station 400kV D/C (Quad moose) line

Corporate Power Ltd Phase-I (2x270 MW) – CoDs in March 2012 & June 2012 (earlier known as Chitrapur Coal and Power Ltd.)

- Corporate Ph-I – Ranchi 400kV D/c twin moose line

3.1.2 Common system strengthening for transfer of power from Phase-I generation projects in Jharkhand and West Bengal to NR/WR

Transmission Scheme approved in Standing Committee Meeting

Common system strengthening for transfer of power from Phase-I generation projects in Jharkhand and West Bengal - Part-A :

- Ranchi – Gaya 400 kV D/C Quad line via proposed Jharkhand Pooling Station near Essar/ Corporate generation projects
- Ranchi New (765/400kV S/s) - Dharamjayagarh 765kV S/C (instead of Ranchi-Sipat 765kV 2nd S/C line)
- Establishment of 400kV Jharkhand Pooling Station near Essar and Corporate generation projects (depending upon progress of Essar and Corporate IPPs). This will be a switching station without ICTs.

II. Common system strengthening for transfer of power from Phase-I generation projects in Jharkhand and West Bengal - Part-B :

- New 2x1500 MVA, 765/400 kV substation at Varanasi and Kanpur
- Gaya – Varanasi 765 kV S/C (instead of Gaya-Balia 765kV second line)
- LILO of one circuit of Gaya - Balia 765 kV line at Varanasi
- Varanasi – Kanpur 765 kV D/C
- Kanpur – Jhatikra 765 kV S/C
- 400kV connectivity for new 765/400kV S/s at Varanasi & Kanpur
- Varanasi - Sarnath (UPPCL) 400kV D/C Quad line
- LILO of Sasaram - Allahabad 400kV line at Varanasi
- Kanpur (765/400kV) - Kanpur (Existing) 400kV D/C Quad line

III. Private Sector line: In addition to the above work to be undertaken by PGCIL, Dharamjaygarh – Jabalpur 765kV D/C line (2nd line) would be under the scope of private sector. Associated 765kV line bays at Dharamjaygarh and Jabalpur sub-station would be under the scope of POWERGRID.

3.2 Phase-I IPPs in Orissa & ATS (Under generation developer):

The latest status of Phase-I IPPs in Orissa would be as given below.

Sl no	Projects	Generation Developer/ Open Access Applicant	Date of Commissioning	Installed Capacity (MW)	LTOA Required (MW)				
					NR	WR	ER	SR	Total
1	Sterlite	Sterlite Energy Ltd	Jun-09	2400	200	200	-	-	400
2	GMR	GMR Kamalanga Energy	Nov -11	1050	600	-	-	200	800
3	Navbharat	Navabharat Power Pvt. Ltd	Mar-12	1050	465	255	-	-	720
4	Monnet	Monet Power Company Ltd	June-12	1050	300	225	225	150	900
5	Jindal	Jindal India Thermal Power	March-11	1200	834	210	-	-	1044
6	Lanco Babandh	Lanco Babandh Power Pvt Ltd	Dec-13	2640	650	950	-	-	1600
7	Ind Barath	Ind Barath Energy(Utkal) Ltd	Dec-11	700	266	350	-	-	616
Subtotal(Orissa)		10090	3315	2190	225	350	6080		

3.2.1 Transmission System : (Under the Scope of Generation Developer)

A. ATS planned Upto Pooling Station at Jharsuguda

- 1 Sterlite (2400 MW)
 - Sterlite – Jharsuguda Pool 400kV D/c line with associated line bays
- 2 Ind-Barath (700 MW)
 - Ind-Barath – Jharsuguda Pool 400KV D/c line with associated line bays

B. ATS planned Upto Pooling Station at Angul

- 1 Jindal Thermal (1200 MW)
 - Jindal – Angul Pool 400KV D/c line with associated line bays
- 2 Monnet (1050 MW)
 - Monet – Angul Pool 400KV D/c line with associated line bays
- 3 GMR (1050 MW)
 - GMR – Angul Pool 400KV D/c line with associated line bays
- 4 Lanco Babandh(2640 MW)
 - Lanco Babandh – Angul Pool 400KV 2xD/c line
 - 3x1500MVA, 765/400kV ICT at Angul with associated line bays
- 5 Navbharat Ph-I (1050 MW)
 - Navbharat – Angul Pool 400KV D/c Quad line with associated line bays

The temporary interim arrangement (under the scope of respective generation developer) for power evacuation from **Sterlite, Ind Bharat, GMR and Jindal IPPs** in Orissa would be as following:

Sterlite	• LILO of one ckt of Rourkela-Raigarh 400kV D/c line
Ind Bharat	• LILO of other ckt of Rourkela-Raigarh 400kV D/c line
GMR	• LILO of one ckt of Talcher-Meramundali 400kV D/c line
Jindal	• LILO of Meramundali-Jeypore 400kV S/c line

3.2.2 Transmission System for Phase-1 generation projects in Orissa: (Under the Scope of PGCIL)

Transmission Scheme approved in Standing Committee Meeting

The scope of work under Part-A, B, C & D would be as following:

I. Transmission System for Phase-1 generation projects in Orissa - Part-A

- Angul Pooling Station – Jharsuguda Pooling Station 765kV 2xS/c
- LILO of Rourkela – Raigarh 400kV D/c at Jharsuguda Pooling station
- *LILO of Meramundali – Jeypore 400kV S/c line at Angul pooling station
- *LILO of one ckt of Talcher - Meramundali 400kV D/c line at Angul pooling station
- Establishment of 2x1500 MVA, 765/400kV Pooling Station at Jharsuguda
- Establishment of 4x1500MVA, 765/400kV Pooling Station at Angul

[* These LILO would be later disconnected when Angul pooling station is developed at 765kV, otherwise it would cause short circuit level problem.]

II. Transmission System for Phase-1 generation projects in Orissa - Part-B

- Establishment of 765kV switching station at Dharamjaygarh / near Korba
- Establishment of 765/400kV Pooling Station at Jabalpur
- Jharsuguda Pooling Station – Dharamjaygarh / near Korba (WR) 765kV D/c
- LILO of Ranchi – WR Pooling near Sipat 765kV S/c line at Dharamjaygarh / near Korba
- Dharamjaygarh / near Korba – Jabalpur Pooling Station 765kV D/c line
- Jabalpur Pooling Station – Jabalpur 400 kV D/c (high capacity) line

III. Transmission System for Phase-1 generation projects in Orissa - Part-C

- Jabalpur Pooling Station – Bina 765kV D/c line
- Bina – Gwalior 765kV S/c (3rd circuit)
- Gwalior - Jaipur 765kV S/c line (2nd circuit)
- Jaipur - Bhiwani 765kV S/c line

IV. Transmission System for Phase-1 generation projects in Orissa - Part- D (under Private Sector)

- Establishment of 2x1500MVA, 765/400kV Bhopal Pooling Station
- Jabalpur Pool – Bhopal – Indore 765kV S/c
- Bhopal New substation – Bhopal (M.P.) 400kV D/c (high capacity)

ITEM NO.4.0 ATS for power evacuation from Phase-I generation projects in Sikkim/Bhutan:

The latest scenario of Phase-1 Gen Projects in Sikkim was the following:

Phase-1 Gen Projects in Sikkim

Sl. No	Name of the Generation Plant	Capacity/ Power to be transferred	Tentative Beneficiaries	Expected Commissioning Schedule
1	Teesta-III	200x6 =1200 MW	PSEB-340MW, HPGCL-200MW, UPPCL-200MW, Rajasthan Discom-100MW	Aug., 2011
2	Teesta-VI	125x4=500 MW	MSEDCL (Maharashtra)	Nov, 2012
3	Jorethang	48x2 = 96 MW	NR/WR	April., 2012
4	Rangit-IV	40x3=120 MW	NR/WR	Nov., 2013
#5	Tashiding	48.5x2 =97 MW	NR/WR	Oct.,2012
#6	Tingting	49.5x2=99 MW	NR/WR	Oct.,2012
7	Rongnichu	48x2=96 MW	Chhattishgarh	NA
8	Chuzachen	49.5x2=99 MW	PSEB, DVB, HSEB, BSEB	Sept., 2010
9	Bhasmey	25.5x2 = 51 MW	NR/WR	June, 2012
Total		2358 MW		

Note: Tingting(99 MW) and Tashiding(97 MW) HEPs under Stage-II

4.1 Project specific revised dedicated transmission system:

(under the scope of Generation Project Developers)

A. Upto Pooling Station at New Melli/ Kishanganj / Mangan[#] (proposed at a later date)

- Teesta-III:** Teesta-III – Kishanganj 400kV D/c line with Quad Moose conductor (being implemented by TPTL under JV route between TUL and PGCIL)
- Teesta-VI:** Teesta-VI – Rangpo 220kV D/c line with Twin Moose conductor
- Jorethang & Rangit-IV:** Jorethang – New Melli Switching station 220kV D/C line with single moose conductor, one ckt via Rangit-IV.

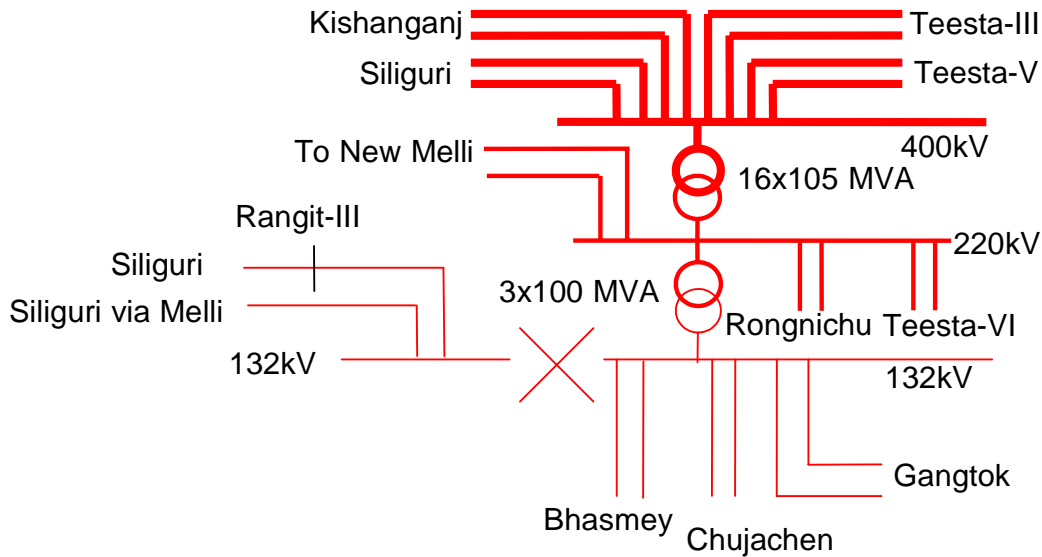
4. ATS for Tingting (99MW) and Tashiding (97MW) HEPs:

- Sikkim Govt. would establish the 220kV pooling point at Tingting/Tashiding and connecting 220kV D/C twin moose upto New Melli switching station of PGCIL.

B. Upto Pooling Station at Rangpo

- Chuzachen :** Chuzachen – Rangpo 132kV D/C line with Zebra conductor.
- Rongnichu:** Rongnichu – Rangpo 220kV D/C line with Zebra conductor.
- Bhasmey :** Bhasmey HEP - Rangpo S/S 132 D/C line

**4.2 Revised ATS for HEPs in Sikkim/ Bhutan:
(under the scope of PGCIL)**



The revised scope of work under Part-A, Part-B & Part-C would be as following:

**Part – A: Transmission System for development of pooling station at Kishanganj and associated transmission works (under the Scope of PGCIL)
(By 2011-12, for evacuation of 1300 MW from Sikkim)**

- Establishment of New 2x315 MVA, 400kV sub-station at Kishanganj
- LILO of Siliguri (Existing) – Purnea 400kV D/c line(quad) at new pooling station Kishanganj
- LILO of Siliguri (Existing) – Purnea 400kV D/c line (on which re-conductoring with high capacity HTLS conductor is undertaken by PGCIL) at Kishanganj with construction of LILO portion to be made by Quad moose conductor line.
- LILO of Siliguri – Dalkhola 220kV D/c line at new pooling station Kishanganj
- LILO of Gangtok-Melli 132kV S/c line upto Rangpo, where Chuzachen- Rangpo 132kV D/c would be connected so as to form Chuzachen- Gangtok and Chuzachen-Melli 132kV S/c lines. [This would be a temporary arrangement till establishment of Rangpo pooling substation under Part-B of the scheme and termination of Gangtok-Rangpo, Melli-Rangpo and Chuzachen-Rangpo 132kV lines at Rangpo]

**Part – B: Transmission System for development of pooling substations within Sikkim and transfer of power to a new pooling station Kishanganj in northern Part of West Bengal/Bihar (under the Scope of PGCIL)
(By 2012-13, when additional 1100MW materializes in Sikkim)**

- Establishment of 16x105MVA, 1 ph, 400/220kV and 3x100MVA 220/132kV, Gas Insulated Substation at Rangpo
- Establishment of 220kV Switching station at New Melli
- LILO of Teesta III – Kishanganj 400kV Quad D/c line (to be constructed through JV route) at Rangpo
- New Melli - Rangpo 220kV D/c line (with twin Moose conductor)
- LILO of Gangtok-Rangit 132kV S/c line at Rangpo and termination of Gangtok-

Rangpo/Chujachen and Melli–Rangpo/Chujachen 132kV lines (constructed under part-A through LILO of Gangtok-Melli 132kV S/c line upto Rangpo) at Rangpo sub-station

- LILO of Existing Teesta V – Siliguri 400kV D/c line at Rangpo
- Kishanganj – Patna 400kV D/c (quad) line

Part-C: Transmission System for development for power transfer from Bhutan to NR/WR (under the Scope of PGCIL)

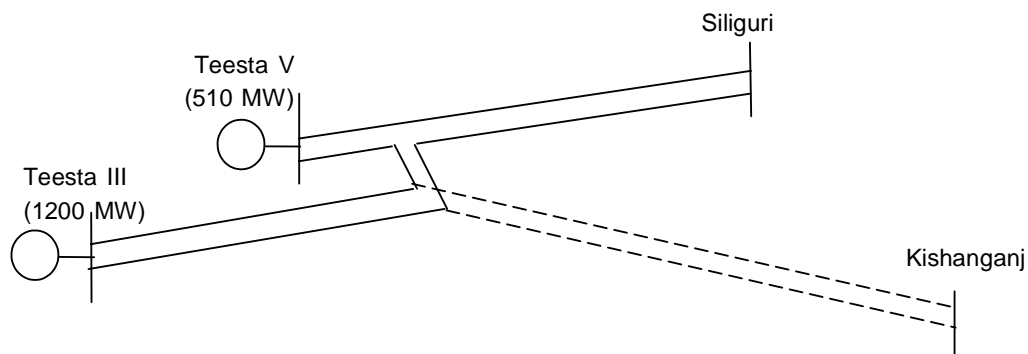
(By 2014-15, when Punatsangchu-I (1200MW) comes up in Bhutan)

- New 2x315MVA, 400/220kV AC & HVDC sub-station with ± 800 kV, 3000MW converter module at new pooling station at Alipurduar.
- Extension of ± 800 kV HVDC station with 3000 MW inverter module at Agra
- LILO of Bishwanath Chariyali – Agra HVDC line at new pooling station in Alipurduar for parallel operation of the HVDC station
- LILO of Bongaigaon – Siliguri 400kV D/c line(quad) (Bongaigaon – Siliguri 400kV D/c line under Pvt. Sector) at new pooling station in Alipurduar
- LILO of Tala-Siliguri 400kV D/c line at new pooling station in Alipurduar.
- LILO of Birpara-Salakati 220kV D/c line at new pooling station in Alipurduar
- Punatsangchhu-I & II – Alipurduar 400kV 2xD/C with Quad moose conductor line
- Earth Electrode line at new pooling station at Alipurduar
- Earth Electrode line at Agra HVDC Terminal

Note : The transmission charges for Part ‘A’ & ‘B’ of the above transmission works would be initially borne by the generation developers. However, the modality for cost and transmission resource sharing among the IPPs should be sorted out between IPPs and PGCIL. The transmission charges for Part ‘C’ would be borne by beneficiaries of Bhutan power.

ITEM NO.5.0 Interim Arrangement for evacuation of power from Teesta-III HEP (1200MW) being developed by Teesta Urja Ltd.

- 1st unit of Teesta-III would be injected to one circuit of 400kV Teest V-Siliguri D/C line (as shown below) for which TPTL would borne the cost as an Interim Arrangement.
- Special protection scheme would also require to be provided in order to back down Teesta-III generation.



ITEM NO.6. Cross Border Transmission link between India and Bangladesh

Transmission Scheme approved in Standing Committee Meeting

6.1 The following interconnection was decided between India and Bangladesh.

- **India portion**
 - i. Establishment of 400kV Switching Station at Baharampur
 - ii. LILO of Farakka - Jeerat 400kV S/C line at Baharampur : 3 km
 - iii. Baharampur(India)-Bheramara(Bangladesh) 400kV D/C line (Indian Portion) : 85 km
- **Bangladesh portion**
 - iv. Baharampur (India)-Bheramara (Bangladesh) 400kV D/C line (Bangladesh portion) :
40 km
 - v. LILO of Ishurdi - Khulna South 230kV D/C line at Bheramara: 5 km
 - vi. Establishment of 500MW HVDC back-to-back Station and 230kV Switching Station at
Bheramara

ITEM NO.7 Proposal for LILO of one circuit of 765kV Tilaiya UMPP-Balia D/C line at Gaya S/S as part of ATS for Tilaiya UMPP (4000 MW) in Jharkhand.

Transmission Scheme approved in Standing Committee Meeting

The revised ATS for Tilaiya UMPP would be as following:

- 765kV Tilaiya- Gaya S/C line
- 765kV Tilaiya-Baliya D/C
- LILO of one circuit of 765kV Tilaiya-Balia D/C line at Gaya

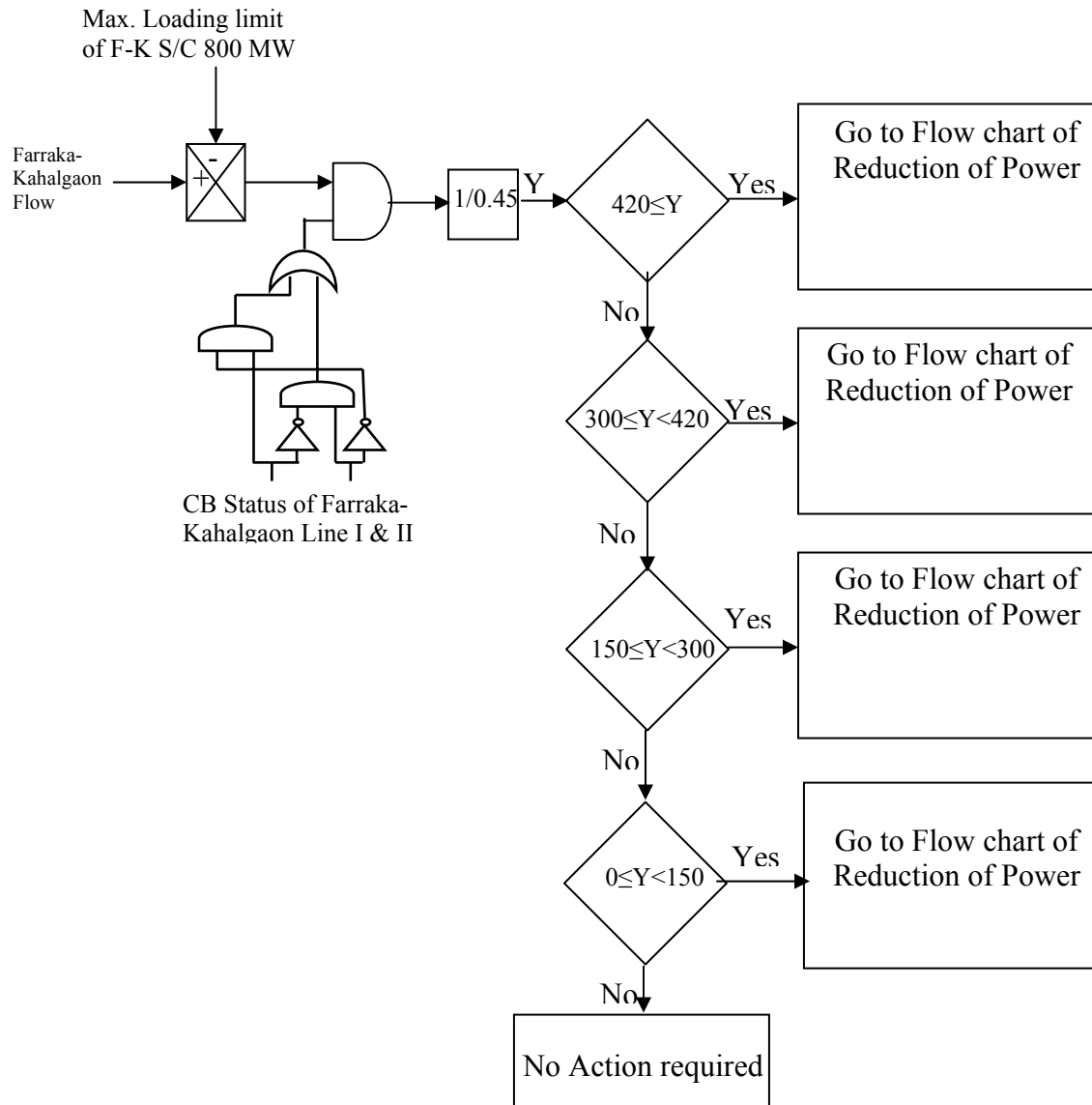
ITEM NO.8 A. WBSETCL's System Strengthening System

- Kharagpur – Chaibasa (PG) 400kV D/c line

B Bussing of the 2nd circuit of 400kV Jamshedpur – Rourkela D/c line at Chaibasa (PG) S/S

- LILO of one circuit of the 400kV Jamshedpur – Rourkela D/c line(1st Ckt) at Chaibasa and bussing of the 2nd circuit at a later date under the regional scheme.

SPS for 400KV Farakka -Kahalgaon

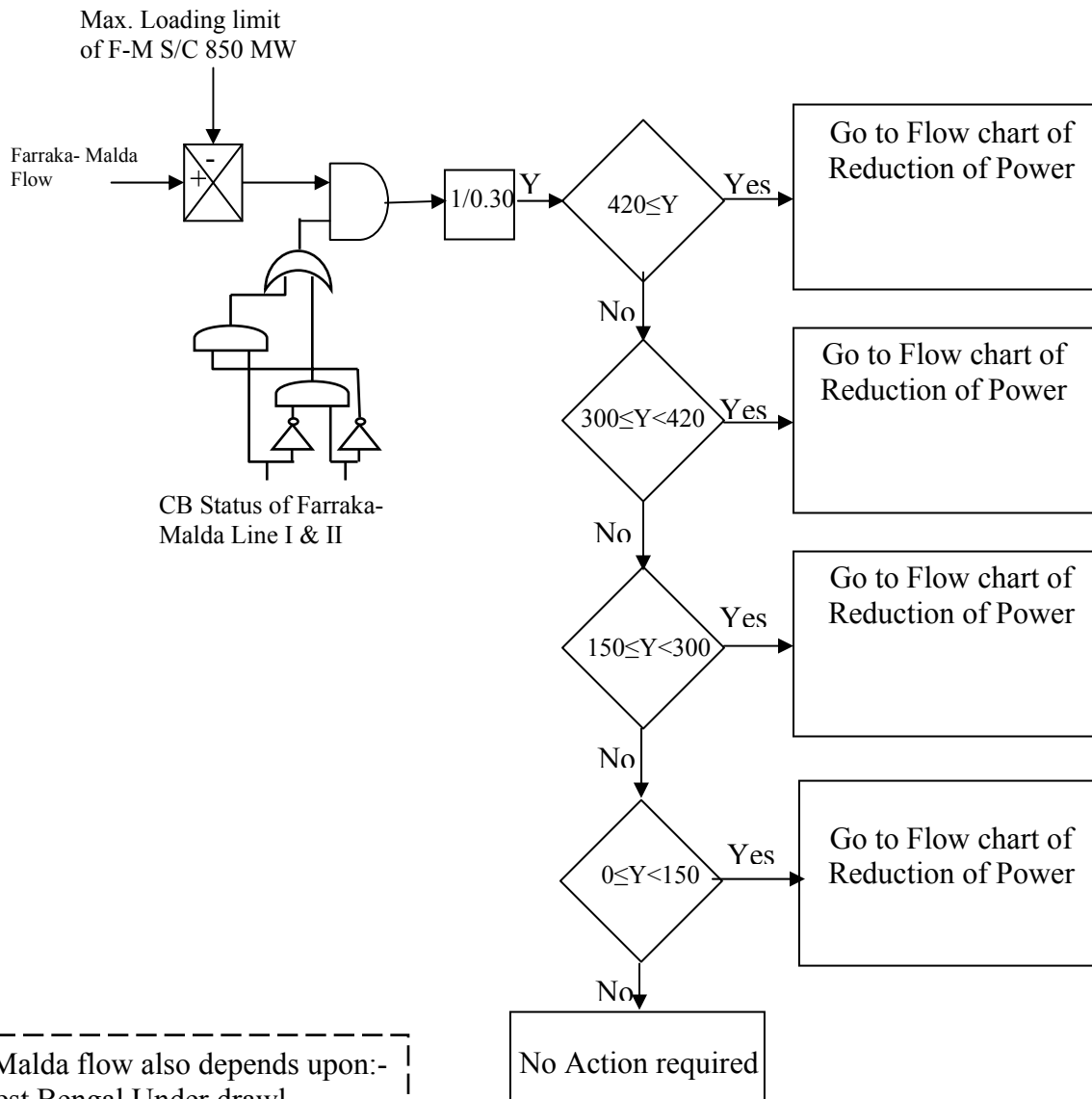


Farakka- Khalgaon flow also depends upon:-

- West Bengal Under drawl
- PPSP in Generation Mode

Control to these can be made manual.

SPS for 400KV Farakka -Malda

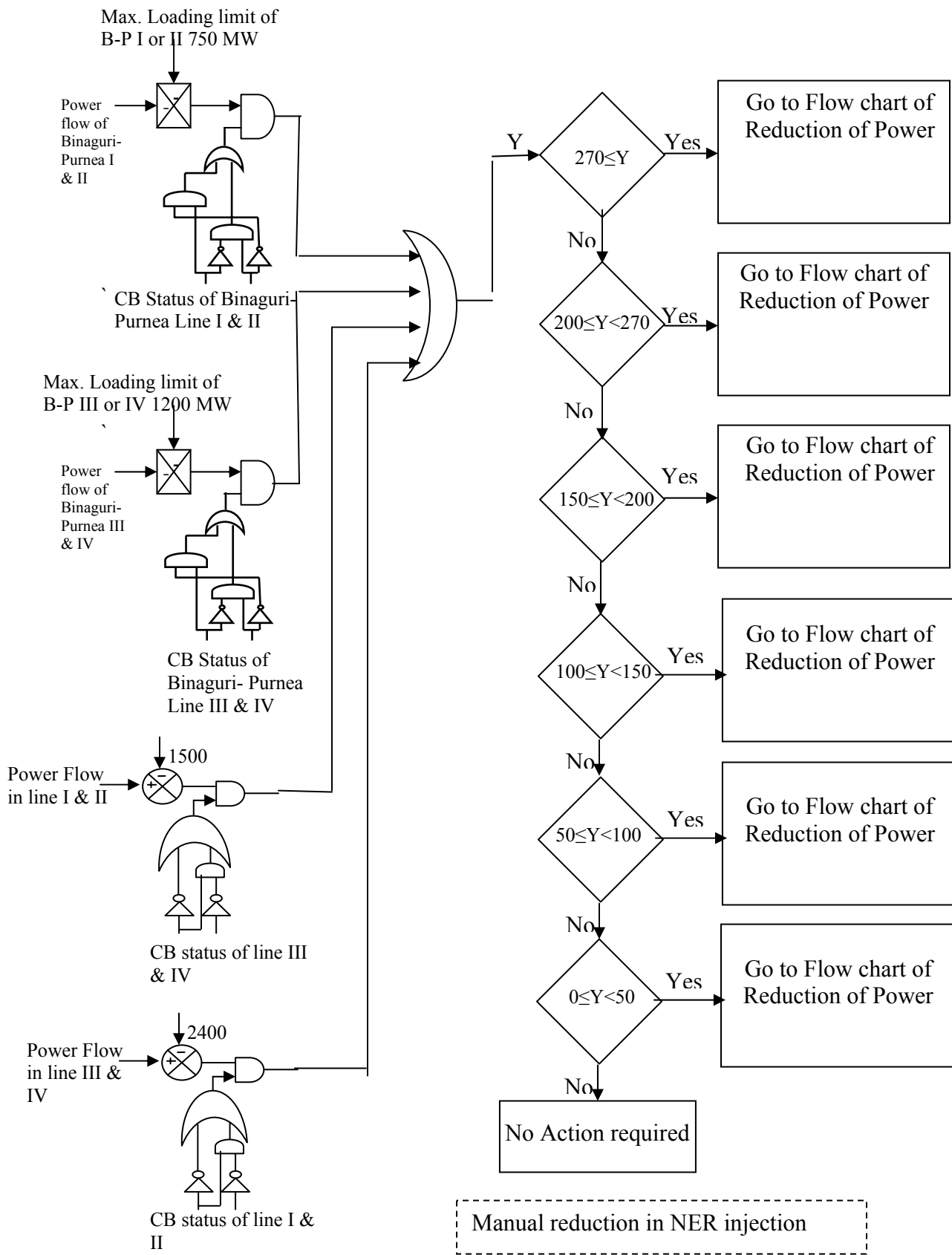


Farakka- Malda flow also depends upon:-

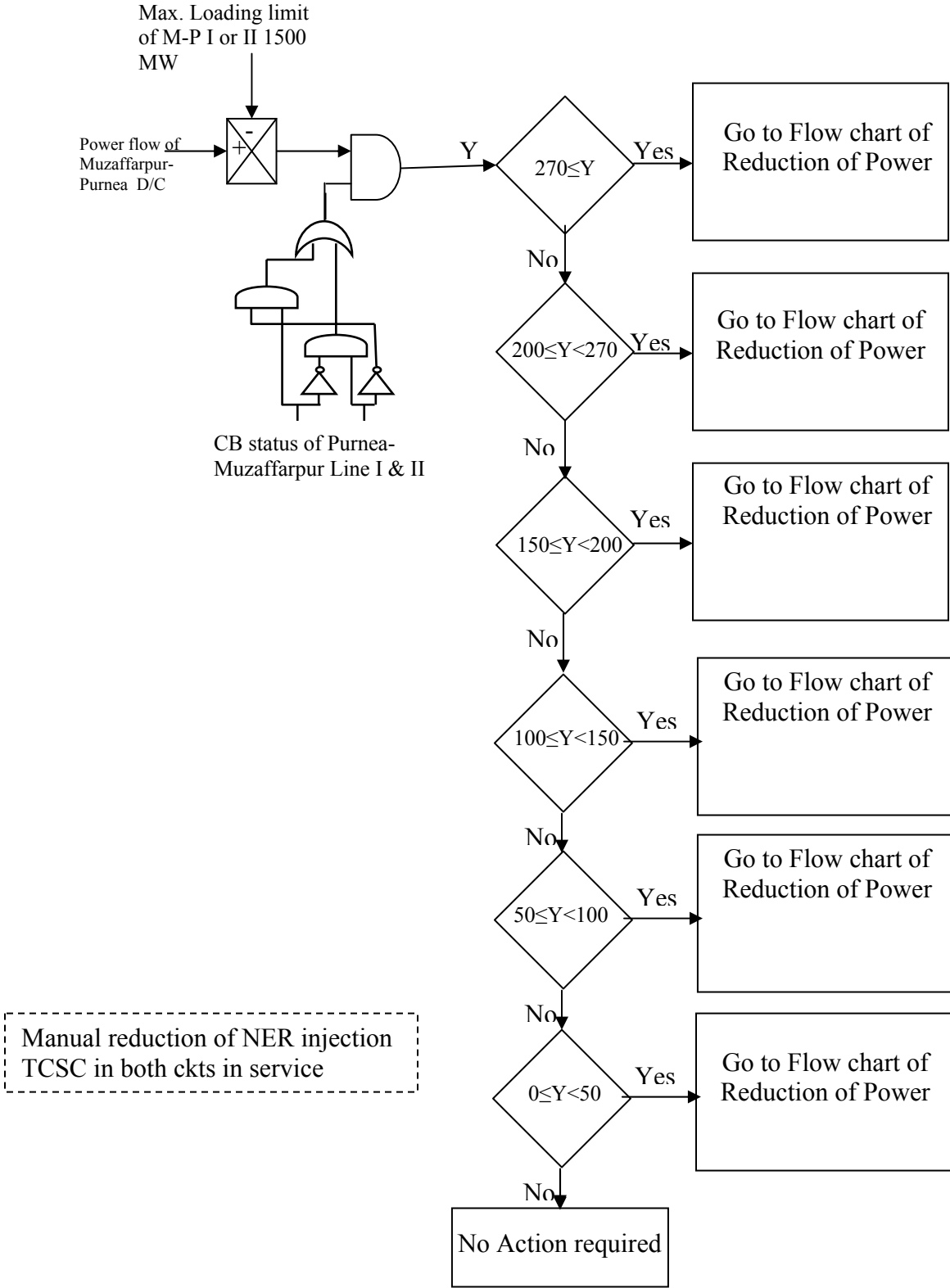
- West Bengal Under drawl
- PPSP in Generation Mode

Control to these can be made manual.

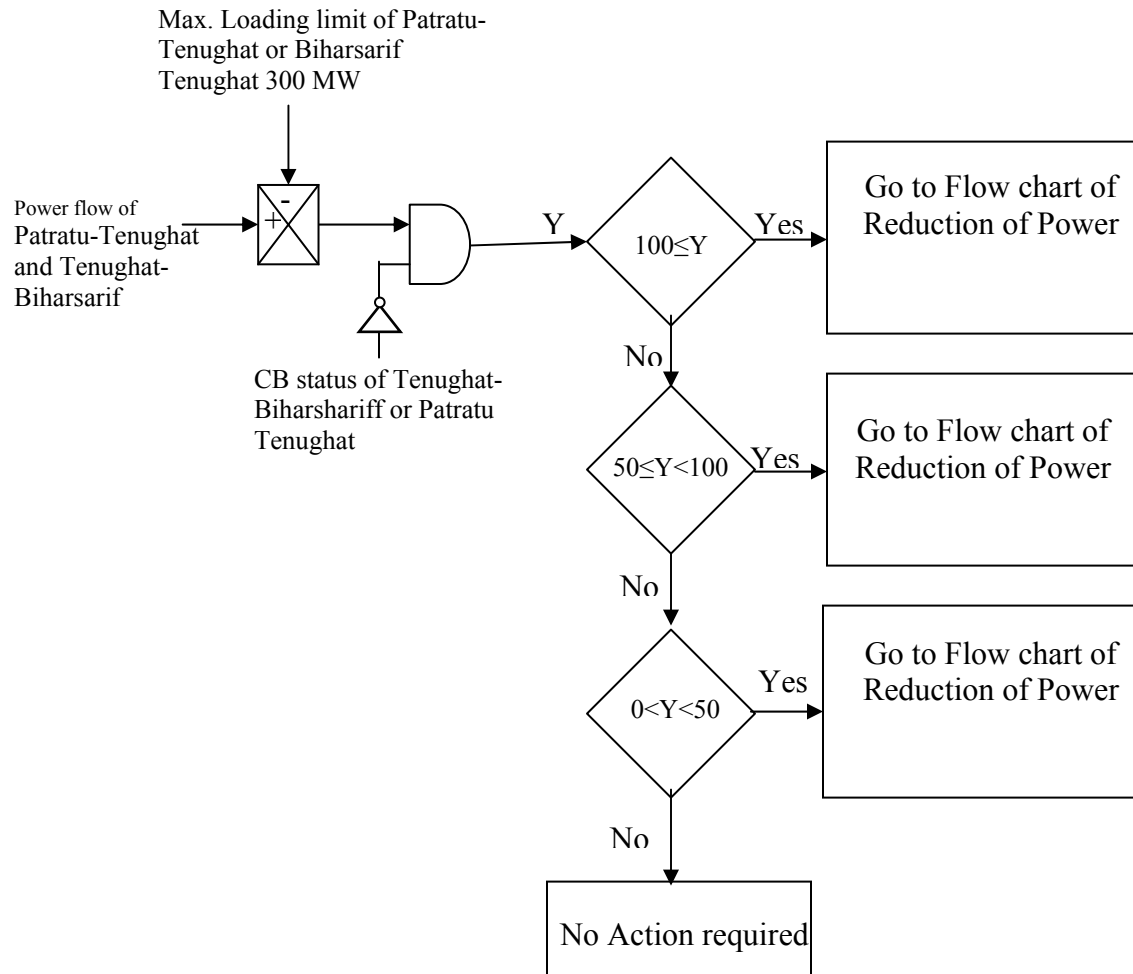
SPS for 400KV Binaguri -Purnea



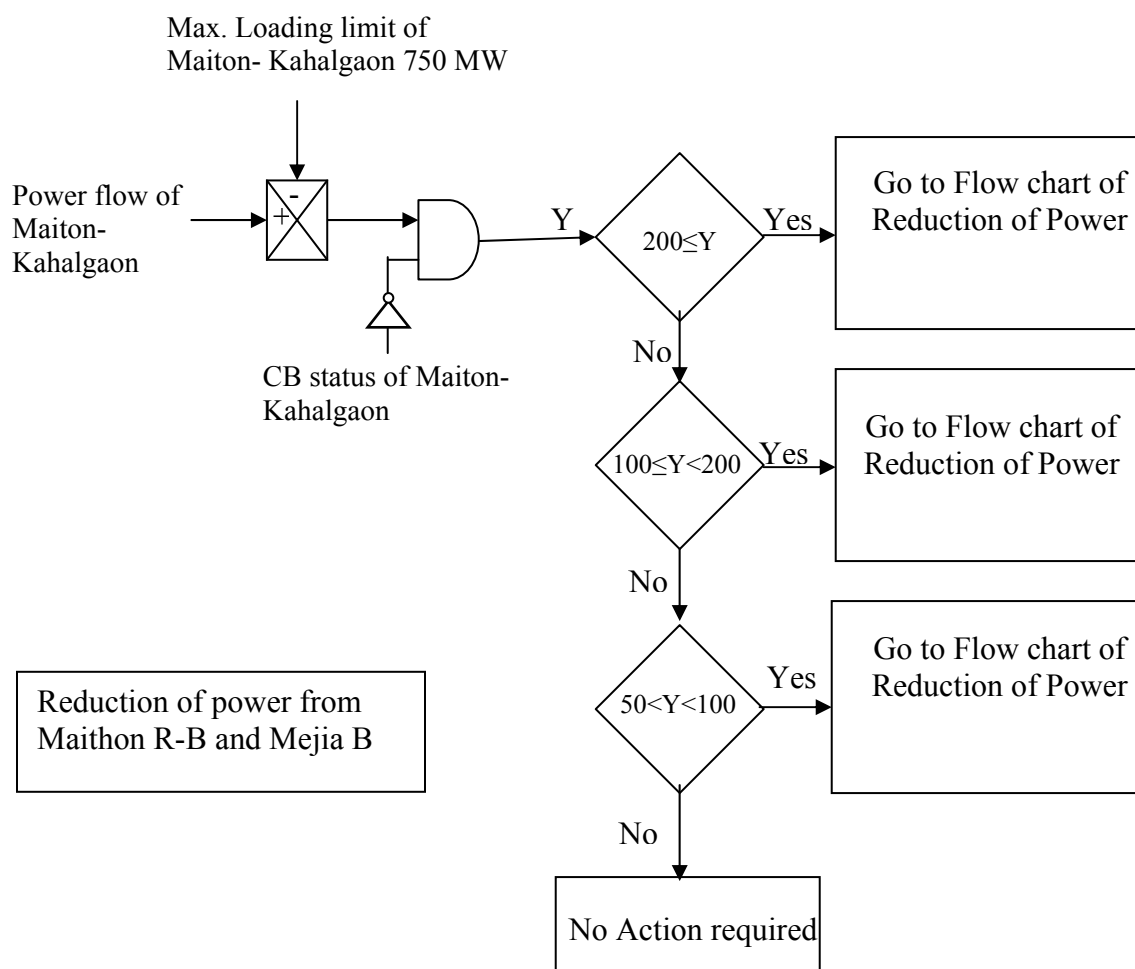
SPS for 400KV Purnea -Muzaffarpur



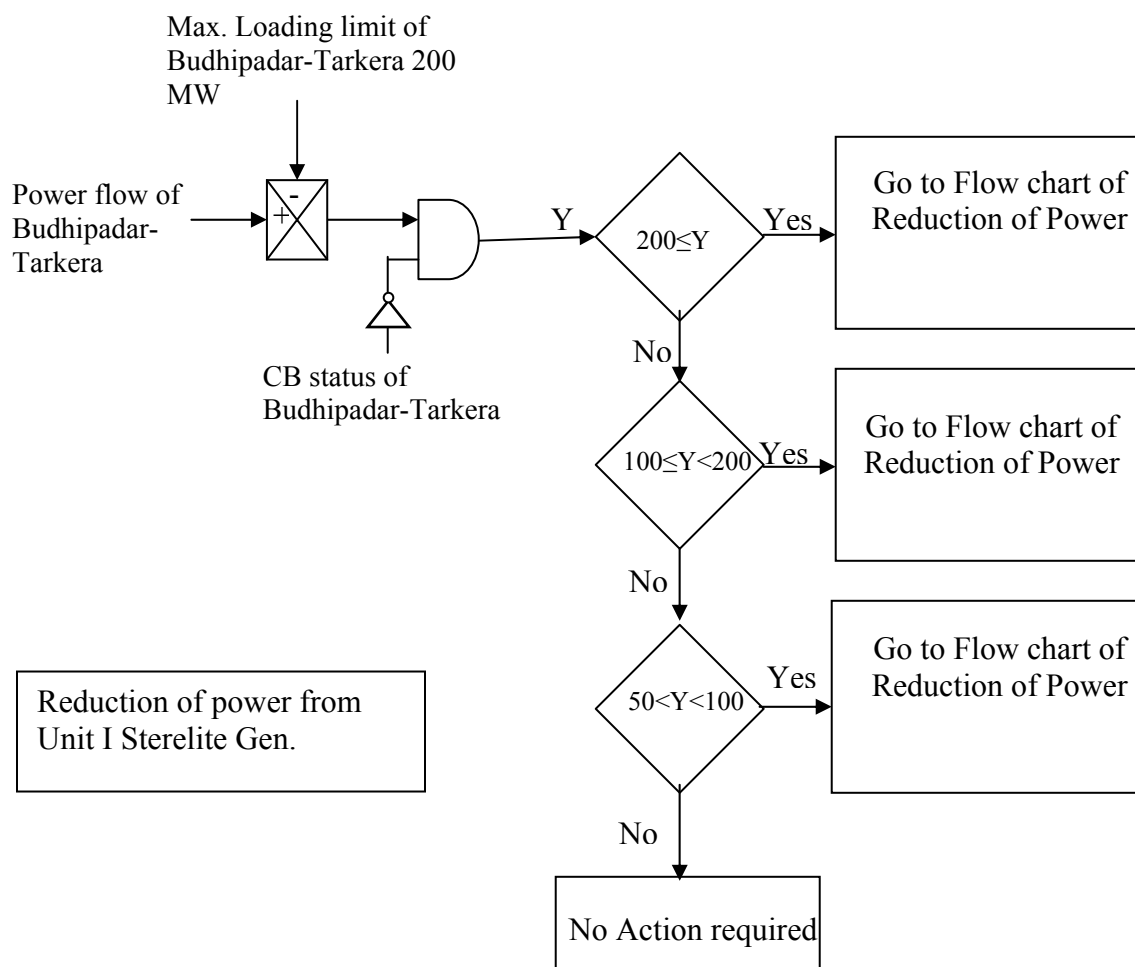
SPS for Tenughat Power Station



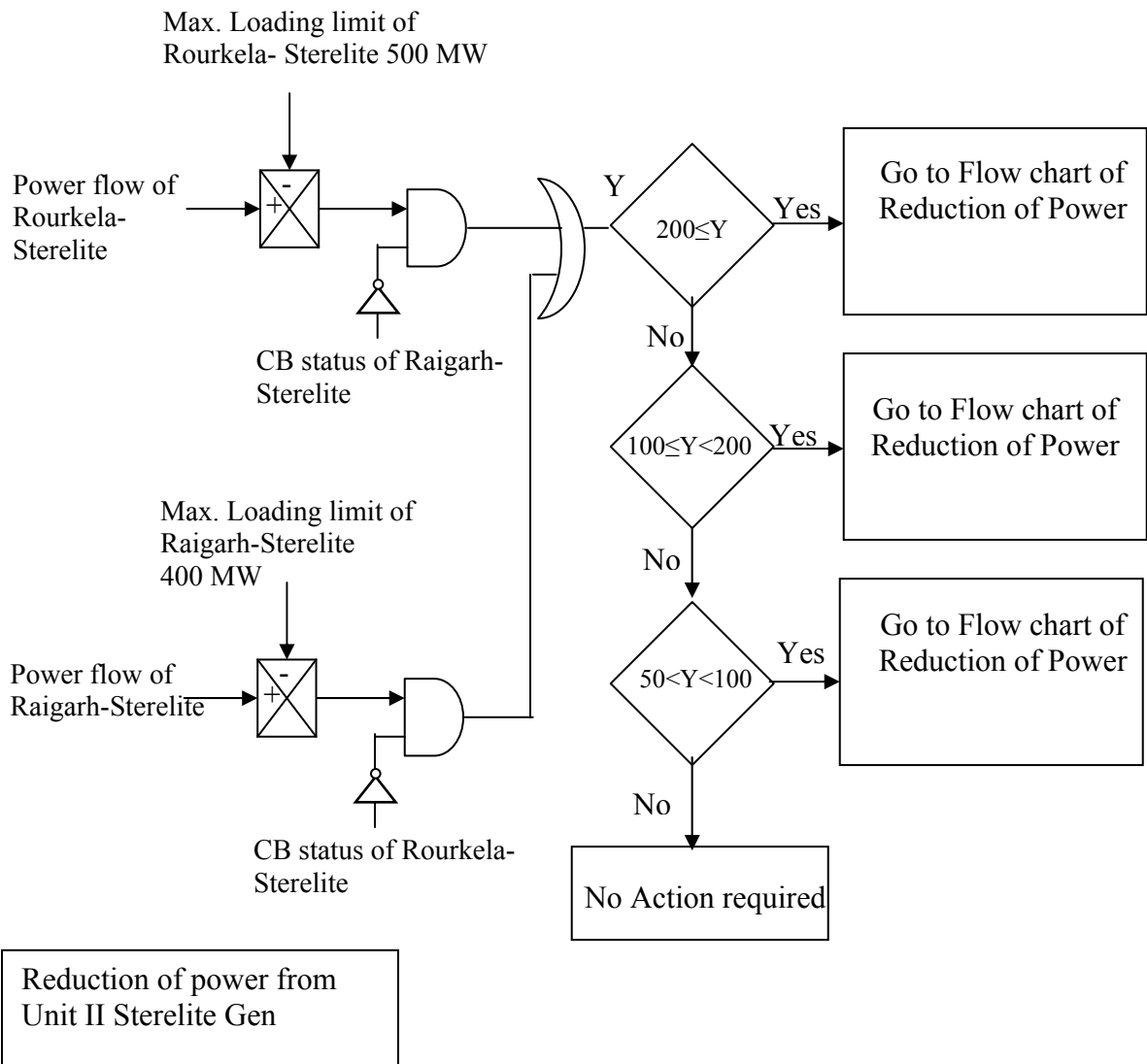
SPS for 400KV Maithon-Kahalgaon D/C



SPS for Unit I of Sterlite



SPS for Unit II of Sterelite



HIGHLIGHTS & GRID PERFORMANCE FOR THE PERIOD AUGUST'10 TO OCTOBER'10

1. FREQUENCY :

Frequency profile for the months of August'10 to October'10 is shown below:

Months	% of time of the month frequency remained			Average Frequency (Hz)
	<49.5 Hz	49.5 to 50.2 Hz (IEGC Band)	> 50.2 Hz	
August'10	7.91	87.50	4.59	49.92
September'10	1.83	85.89	12.28	50.06
October'10	0.95	93.14	5.91	50.04

From the above table it may be observed that:

- Frequency profile in the IEGC band (i.e. 49.5 to 50.2Hz) remained in between 87.5 Hz to 93.14 Hz during the above months. The frequency profile of October, 2010 was shown considerable improvement whereas the average frequency during the above three months remained in between 49.92 Hz to 50.04 Hz.

2. PERFORMANCE REVIEW (YoY COMPARISON)

Description	Average (MW) / Month			October'09	October'10	% change
	August'09 to October'09	August'10 to October'10	% change			
Net Generation (MU)/Month	7985	8636	8.2	7857	8820	12.3
Net Central Sector Thermal Generation (MU)/Month	1753	2363	34.8	1800	2607	44.8
Import from CPPs (MU/Month)	276	404	46.4	379	380	0.5
ER Consumption (MU/Month)	7228	7954	10.0	7171	7874	9.8
Net Export to Outside Region (MU/Month) including transmission loss	1033	1086	5.1	1065	1326	24.5
Regional Peak Demand Met (MW)	12384	13085	5.7	12108	12922	6.7
Peak Export (MW)	3586	3612	0.7	3275	3612	10.3

Generation/ Demand/ Export:

During the period from August'10 to October'10 as compared with the corresponding period of previous year (i.e. August'09 to October'09)

- Net average generation/month increased considerably (8.2 %)

- Net Central Sector Thermal Generation/month has increased significantly (34.8%) particularly during October,2010 (45%).
- Overall Availability/month from CPPs has also increased.
- Energy consumption/month in ER has shown improvement by 10%.
- Net Export from ER to other regions increased only by 5.1%
- Regional Peak Demand met increased by 5.7%
- Peak export registered at 3612 MW during October, 2010 showing 10% rise.

3. CONSTITUENTWISE REQUIREMENT (MU/DAY) & PEAK DEMAND MET (MW) DURING SEPTEMBER AND OCTOBER'10

SYSTEM	REQUIREMENT MET (MU/ DAY)		PEAK DEMAND MET (MW)	
	SEPTEMBER'10	OCTOBER'10	SEPTEMBER'10	OCTOBER'10
BSEB	31.83	33.03	1520	1659
JSEB	16.63	16.92	851	880
DVC	41.55	43.10	1914	1932
GRIDCO	65.40	60.12	3340	3198
WBSEDCL	74.96	68.60	4400	4253
CESC	28.31	26.6	1610	1615
DPL	5.00	5.42	253	250
SIKKIM	0.74	0.88	65	78
Region	264.43	254.68	13085	12922

4. MONTHLY AND CUMULATIVE EXPORT OF POWER FROM ER

(BASED ON SEM FIGURES)

Table: 1

(A) EXPORT FROM ER

Region	Export in MU		Export in MU		% Growth in Export *	
	During October'10	Cumulative (August'10 to October'10)	During October'09	Cumulative (August'09 to October'09)	During October'10	Cumulative (August'10 to October'10)
NR	1356.7	4341.98	1614.53	5092.62	-16.0	-14.7
WR	0	0	0	0	-	-
SR	67.94	67.94	0	0	-	-
NER	0	0	0	0	-	-
TOTAL	1424.64	4409.92	1614.53	5092.62	-11.8	-13.4

B) IMPORT TO ER

Region	Import in MU		Import in MU		% Growth *	
	During October'10	Cumulative (August'10 to October'10)	During October'09	Cumulative (August'09 to October'09)	During October'10	Cumulative (August'10 to October'10)
NR	0	0	0	0	-	-
WR	106.87	888.61	356.91	862.2	-70.1	3.1
SR	0	183.73	223.04	1116.2	-100.0	-83.5
NER	26.15	202.34	46.41	208.88	-43.7	-3.1
TOTAL	133.02	1274.68	626.36	2187.28	-78.8	-41.7

Net Export from ER	1291.62	3135.24	988.17	2905.34	30.7	7.9
---------------------------	----------------	----------------	---------------	----------------	-------------	------------

* As compared to similar period of last year. NA – Not Applicable.

During the period under review i.e., August'10 to October'10, the net export from Eastern Region was 3135 MW as compared to 2905 MW in the corresponding period of previous year, showing an improvement of only 7.9%. During this period (i.e August'10 to October'10), NR drew 4342 MW whereas, WR & SR wheeled 888 MU & 115 MW respectively through ER.

5. IMPORTANT EVENTS DURING THE PERIOD SEPT'10-NOV'10

- a) Mejia#7(500 MW) first time synchronized with coal firing at 23:25 Hrs of 07.09.10 and achieved 500 MW for the first time at 21:35 hrs of 30.09.10
- b) 400 KV Maithon(PG)-Maithon Right Bank(MPL) ckt-I (30 KM) charged for the first time upto gantry of Maithon Right Bank switchyard on 29.09.10 at 23:29 hrs.
- c) 400 KV Maithon(PG)-Maithon Right Bank(MPL) ckt-II (30 KM) charged for the first time upto gantry of Maithon Right Bank switchyard on 29.09.10 at 23:53 hrs.
- d) Unit-2 (110 MW) of KBUNL, MTPS Stage-I (2x110 MW) was declared to be on commercial operation w.e.f. 0000hrs of 15.10.2010
- e) 315 MVA,400/220 KV New ICT of Malda charged on no load at 15:00 hrs of 05.10.10 and loaded on 06.10.10 at 16:15 hrs.
- f) 400 KV Bus-II of Maithon Right Bank Switchyard charged for the first time on 12.10.10 at 11:35 hrs.
- g) 400 KV Bus-I of Maithon Right Bank Switchyard charged for the first time on 12.10.10 at 16:35 hrs.
- h) Unit-2 (600 MW) of Sterlite Thermal Power Project was commissioned (full load) on 14.10.2010
- i) Unit-II of KBUL(Kanti Bijli Utpadan Ltd), a joint venture of NTPC and BSEB(Baisali) started commercial operation w.e.f 00:00 hrs of 15.10.10
- j) 400 KV Bus-III of Barh Generating station of NTPC charged for first time on 28th October,2010 at 23:23 hrs.
- k) 400 KV Bus-IV of Barh Generating station of NTPC charged for first time on 28th October, 2010 at 23:24hrs.
- l) 400 KV Binaguri-Purnia-II restored on normal tower on 12/11/2010 at 17:58 hrs, which was under outage since 23:48 hrs of 13/04/2010 due to tower collapse.
- m) 50 MVAR Bus Reactor-I of MPL (Maithon Right Bank Project) charged for first time on 18/11/2010 at 10:22 hrs.

Annexure-II (4/4)

- n) 50 MVAR Bus Reactor-II of MPL (Maithon Right Bank Project) charged for first time on 18/11/2010 at 11:55 hrs.
- o) 80 MVA,400/11.5/6.9 KV Station Transformer of MPL(Maithon Right Bank) first time charged on 19/11/10 at 18:34 hrs.
- p) STPS (Santhaldi)#6(250 MW) synchronized for the first time on 21/11/10 at 19:35 hrs.
- q) 400 KV Ranchi-Rourkela –I first time charged at 17:08 hrs from Rourkela end and synchronized at 17:22 hrs at Ranchi end.
- r) 400 KV Ranchi-Rourkela –II first time charged at 18:03 hrs from Rourkela end and synchronized at 18:12 hrs at Ranchi end.

STATUS OF RGMO IN ER

Annexure-III

LIST OF HYDRO GENERATING UNITS (10MW & ABOVE)

CONSTITUENT	STATION	UNIT	CAPACITY	STATUS OF RGMO	ERLDC Obeservation
NHPC	RANGIT	1	20	Pondage capacity is to generate power upto 3 hours only.Hence not under the perview of RGMO	☐
		2	20		
		3	20		
CHPC	CHUKHA(Bhutan)	1	84	Not under the perview of RGMO	
		2	84		
		3	84		
		4	84		
THPA	TALA(Bhutan)	1	170	Not under the perview of RGMO	☐
		2	170		
		3	170		
		4	170		
		5	170		
		6	170		
TEESTA	TEESTA	1	170	Taken in RGMO moe at 00:00hrs of 01.08.10	Satisfactory
		2	170		
		3	170		
DVC	MAITHON HPS	1	20	RGMO detail is n't available	☐
		2	20		
		3	20		
	PANCHET HPS	1	40	RGMO detail is n't available	☐
2		40			
JSEB	SUBARNREKHA	1	65	RGMO in place,But due to less availabilty od water ,RGMO could not tested	☐
		2	65		
OHPC	BURLA	1	49.5	Applied for exemption(56th OCC meeting)	☐
		2	49.5		
		3	24		
		4	24		
		5	37.5		
		6	37.5		
		7	37.5		
	CHIPLIMA	1	24	Applied for exemption(56th OCC meeting)	☐
		2	24		
		3	24		
	BALIMELA	1	60	Applied for exemption(56th OCC meeting)	☐
		2	60		
		3	60		
		4	60		
		5	60		
		6	60		
		7	75		
		8	75		
	UPPER KOLAB	1	80	Applied for exemption(56th OCC meeting)	☐
		2	80		
		3	80		
		4	80		
	RENGALI	1	50	Applied for exemption(56th OCC meeting)	☐
		2	50		
		3	50		
		4	50		
		5	50		
	INDRAVATI	1	150	Applied for exemption(56th OCC meeting)	☐
		2	150		
		3	150		
		4	150		
	WBSEDCL	RAMMAM	1	12.5	RGMO detail is n't available
2			12.5		
3			12.5		
4			12.5		
PPSP		1,2,3,4	900	Not yet implemenetd & exemption not applied(56th OCC meeting)	
TOAL CPACITY			5158		

|

0

| The response was not found satisfactory by ERLDC

STATUS OF IMPORTANT TRANSMISSION LINES UNDER CONSTRUCTION

(As on 31.10.10)

Sl. No.	Name of the Trans. Line	Length (CKM)	Completion Target		Remarks/Constraints
			Schedule	Ant. / Act.	
1.0 INTER REGIONAL SYSTEM					
1.1	Transmission System associated with Barh Gen. Proj. (3x660 MW) (Balance portion)	488	Sep'09	June'10	
1.1.1	400KV D/C Barh (PG) – Balia (PG) (Quad) line	488	Sep'09	June'10	Line completed & test charged on 30/06/10
1.2	East West Transmission Corridor Strengthening Scheme –I	1150	Jun - 09	Dec.'10	
1.2.1	400 kV D/C Ranchi - Rourkela	290	Jun - 09	Nov.'10	ROW problem
1.2.2	400 kV D/C Rourkela - Raigarh	420	Jun -09	Dec.'10	Under progress
1.2.3	400 kV D/C Raigarh - Raipur	440	Jun -09	Sep.'10	Line commissioned in Sep'10
1.3	Common scheme for 765 KV Pooling Station and Network associated with DVC & Maithon RB Project etc. and Import by NR & WR via ER	1987	Aug'12	Aug'12	
1.3.1	400 KV D/C Maithon - Gaya line (Q)	470	Aug -12	Dec- 11	
1.3.2	765 KV S/ C Gaya - Sasaram	147	Aug -12	Aug-12	
1.3.3	765 KV S/ C Gaya – Balia	225	Aug- 12	Dec- 11	
1.3.4	765 KV S/ C Ranchi – WR Pooling Station	391	Aug -12	Mar – 12	
1.3.5	400KV D/C Ranchi(New) – Ranchi line – I (Quad)	154	Aug -12	Mar – 12	
1.3.6	400 KV D/C Ranchi(New) – Ranchi line – II (Quad)	156	Aug -12	Mar – 12	
1.3.7	LILO of 400 KV D/C Barh – Balia at Patna	50	Aug -12	Mar - 12	Tendering under progress
1.4	Supplementary Transmission System Associated with DVC & Maithon Right Bank Project	2004	Aug - 12	Aug – 12	
1.4.1	400 KV D/C Maithon RB – Ranchi (PG) line	400	Aug - 12	April - 11	Completion matching with 2nd unit of Maithon RB Gen. Project
1.4.2	400 KV D/C Bokaro TPS Extn. – Koderma TPS	200	Aug - 12	Aug - 12	Gen. project (Bokaro STPP) delayed beyond Mar -12
1.4.3	400 KV D/C Koderma –Gaya line (Quad)	164	Aug - 12	Dec – 11	
1.4.4	400 KV D/C Mejia – Maithon	114	Aug - 12	Dec - 10	Efforts being made to complete matching with 2nd unit of Mejia

Annexure IV(2/6)

1.4.5	765 KV S/C Sasaram – Fatehapur line I	337	Aug - 12	Aug – 12	
1.4.6	400 KV D/C Biharshariff – Sasaram line (Quad)	396	Aug - 12	Dec – 11	
1.4.7	LILO of 220 KV D/C Dehri – Bodhgaya line at Gaya	46	Aug - 12	Dec - 11	Award under progress
2.0 EASTERN REGION					
1.5	Eastern Region Strengthening Scheme – I	1210	Oct - 09	Mar - 11	
1.5.1	400 kV D/C Durgapur - Jamshedpur	374	Oct-09		ECL is not allowing construction. Diverted to allow getting up of Andal airport. Completion uncertain.
1.5.2	400 kV D/C Jamshedpur – Baripada	282	Oct-09	Dec. -10	Severe ROW problem in Jharkhand. Yet to be resolved.
1.5.3	400 kV D/C Baripada - Mendhasal	554	Oct-09	Mar-11	Forest clearance is getting delayed & severe ROW problem in Orissa.
1.6	Eastern Region Strengthening Scheme - II	146	June-10	Dec-10	
1.6.1	400 KV D/C Durgapur– Maithon line	146	June-10	Dec -10	Severe ROW problem being faced
1.7	Transmission system for Start- up Power to DVC and Maithon Right Bank Gen. Project	322	April- 10	Dec - 10	
1.7.1	400 kV D/C Koderma – Biharshariff (Quad)	160	April- 10	Dec - 10	Forest clearance for Bihar portion only is awaited
1.7.2	400 KV D/C Maithon RB – Maithon line	62	April- 10	Sept. - 10	Line test charged on 30.09.10
1.7.3	LILO of one ckt. Of 400 KV D/C Maithon – Jamshedpur line at Mejia.	100	April- 10	Jan -10	Line commissioned on 29.01.10
1.8	Transmission system associated with FARAKKA - III	193	Jun-11	Jun - 11	
1.8.1	400 KV D/C Farakka – Kahalgaon line(2 nd line)	193	Jun-11	Jun-11	Efforts been made to match with Gen. Proj. now expected in Feb - 11
1.9	Immediate evacuation system for NABINAGAR TPS	179	Jun - 12	Jun - 12	
1.9.1	4000 kV D/C Nabinagar – Sasaram line(Twin lapwing)	179	Jun - 12	Jun - 12	Under progress
2.0	220 KV D/C Dhanbad – Giridih	86	Sept. - 09	Dec -10	Check survey completed, Foundation work under progress.
2.1	220 KV D/C Koderma – Giridih	212	Feb - 10	Dec -10	NOC from Govt.of Jharkhand awaited & Severe ROW problem
2.2	LILO of 132 KV D/C Barhi-Koderma line at Koderma	17.71	Dec - 09	Nov - 10	Work is completed & commissioning expected by 09/2010

Annexure IV(3/6)

	DVC				
2.3	220 KV D/C MTPS- Ramgarh line via Gola	406	Dec - 08	June - 11	Final forest clearance awaited
2.4	220KV CTPS – Mejia line, LILO of CTPS – Mejia line at Kalyaneswari Circuit - I	90	Nov-08	Dec - 10	Expected to be charged by Nov' 2010
2.5	220 KV CTPS – Mejia line , LILO of CTPS- Mejia line at Kalyaneswari ckt. - II	92	Nov - 08	Dec - 10	Expected to be charged by Nov' 2010
2.6	220 KV CTPS – Kalyaneswari line LILO at Dhanbad	8	March - 09	Dec-10	Line would be commissioned with the commissioning of the Sub-station
2.7	220 kV CTPS – Pithakiari direct line Bypassing Kalyaneswari				Work has been completed
2.8	S/C LILO of 400 KV Durgapur – Jamshedpur line at DSTPS	7.6	May-10	March - 11	Severe ROW problem
2.9	400KV DSTPS - Raghunathpur	141	May - 10	March - 11	Clearance from Rail awaited
3.0	S/C LILO of 400 KV Maithon – Ranchi line at Raghunathpur TPS	21.12	May- 10	March - 11	Severe ROW problem
3.1	400 KV D/C Raghunathpur TPS - Ranchi	311	Aug-10		Forest clearance & Rail clearance awaited.
	WBSETCL				
4.0	KTPS –Kharagpur 400kV S/C Line	87	Jun-11	2011-12	Foundation & Tower erection work under progress
4.1	LILO of KTPS-Baripada 400KV S/C line at Kaharagpur	7	Jun-11	2011-12	Survey of line and Design & Engineering completed. Foundation work to be commenced
4.2	Sagardighi TPS- Purulia (PG) 400kV D/C	255.8	May-08	Jan-11	Line is being executed by Powergrid as deposit work. ROW problem for 1.3KM & also delay due to completion of bay work at Sagardighi by Powergrid.
4.3	LILO of Jeerat –Lakmikanapur (Subhasgram) 220kV S/C line at New Town AA-III	2	04.04.08		Work could not been executed due to resistance from local people.
4.4	NJP-Teesta LD-III 220KV S/Cline	80.8	06.09.08	Jun-11	NHPC is executing the lines on deposit work basis. Work under progress.
4.5	NJP-Teesta LD-IV 220KV D/Cline	145	06.09.08	Jun-11	
4.6	Teesta LD-III-Teesta LD-IV 220kV S/C line	21	29.12.09	June-11	

Annexure IV(4/6)

4.7	LILO of Arambag-Rishra 220kV S/C line at Singur	20	26.08.07	2011-12	Several attempts to commence work failed due to collective resistance from the villagers. Alternative route alignment being pursued with I&WD and NHAI.
4.8	STPS-Bishnupur 220kV D/C line	224	Sep-07	Jun-11	Line is being executed by Powergrid as deposit work. Delay due to Forest clearance problem for 16.618 Hectares.
4.9	Dalkhola(Powergrid) –Dalkhola 220KV D/C line	3	-	2011-12	0.5 Km UG cable –to be executed by Powergrid as a deposit work. Agreement with WBSETCL would be executed by Nov,10. 1Km O/H line would be executed by WBSETCL& tendering under progress.
5.0	Subhasgram (Powergrid) – Saintala point 220kV D/C line	25		2011--12	Due to acute ROW problem, CESC's proposal for drawal of multi-circuit line (D/C for WBSETCL & D/C fir CESC) under active consideration.
5.1	Jeerat –Rishra 220kV D/C line	141.4	Jun-08	Mar-11	Severe ROW is being faced at eight (8) locations.
5.2	Gokarna –Sagardighi 400kV D/C line	100	2011-12	2013-14	
5.3	Gokarna –Chanditala 400kV D/C line	320	2011-12	2013-14	
5.4	LILO of STPS-Bishnupur 220kV D/C line at Hura	68	2011-12	2012-13	
5.5	LILO Of Jeerat –Raishra 220kV D/C line at Chanditala	80	2011-12	2013-14	
5.6	Gokarna-Krishnanagar 220Kv D/C line	96	2011-12	2013-14	

COMMISSIONING SCHEDULE OF NEW GENERATING STATION

(As on 31 .10 .10)

Sl. No.	AGENCY	NAME OF POWER STATION	STATE	TYPE	UNIT NO.	CAPACITY (MW)	LATEST COMMISSIONING SCHEDULE
<u>CENTRAL SECTOR</u>							
1	DVC	Chanderpura TPS	Jharkhand	THERMAL	7	250	Oil synchronization on 06/01/09
			Jharkhand	THERMAL	8	250	March – 09
		Mejia Phase-II TPS	West Bengal	THERMAL	1	500	July – 10
			West Bengal	THERMAL	2	500	Sept – 10
		Durgapur Steel Plant TPS	West Bengal	THERMAL	1	500	Dec-10
			West Bengal	THERMAL	2	500	Mar-11
		Raghunathpur TPS	West Bengal	THERMAL	1	600	2011-12
			West Bengal	THERMAL	2	600	2011-12
		Koderma TPS	Jharkhand	THERMAL	1	500	Dec-10
			Jharkhand	THERMAL	2	500	Mar-11
	Maithon Power Ltd.	Maithon RB (JV)	Jharkhand	THERMAL	1	525	30.09.2010
			Jharkhand	THERMAL	2	525	Jan-2011
2	NHPC	Teesta Low Dam - III HEP	West Bengal	HYDRO	1	33	Commissioning : December' 11 Generation starts from:January' 12
			West Bengal	HYDRO	2	33	
			West Bengal	HYDRO	3	33	
			West Bengal	HYDRO	4	33	
	Teesta Urja	Teesta-III	Sikkim	HYDRO	1	200	2011-12
			Sikkim	HYDRO	2	200	2011-12
			Sikkim	HYDRO	3	200	2011-12
	GATI	Chujachen	Sikkim	HYDRO	1	49.5	2010-11

Annexure IV(6/6)

			Sikkim	HYDRO	2	49.5	2010-11
3	NTPC	Farakka Stage - III TPS	West Bengal	THERMAL	6	500	Feb – 11
<u>STATE SECTOR</u>							
4	WBPDC	Santalidih TPS	West Bengal	THERMAL	6	250	Dec – 10

Constituent may please indicate the present status of target date of the above power projects of ER.

Annexure - V

SUMMARY OF UI RECEIPT AND PAYMENT STATUS

BILL UPTO 07.11.2010 (Week - 32 of 2010 - 11)
Last Payment Disbursement Date - 18.11.10

Figures in Rs. Lakhs

CONSTITUENTS	Receivable	Received	Payable	Paid	Outstanding
WR	2427.61745	2427.83708	53482.79074	53483.01037	0.00000
SR	6291.74690	6177.70495	4538.12767	4538.12767	114.04195
NER	289.06166	289.86858	14234.79994	14235.60687	0.00001
NR	91540.41981	89627.18005	374.02604	380.24493	1919.45865
BSEB	5416.11195	5416.11195	7968.04663	7912.25014	-55.79649
JSEB	1314.61105	1314.61105	18828.20985	18757.10075	-71.10910
DVC	25701.54808	24444.50741	482.11664	482.11664	1257.04067
GRIDCO	5832.81356	7026.05937	25005.36007	26127.79883	-70.80705
WBSETCL	6733.75798	7164.83442	10414.60052	10796.32964	-49.34732
SIKKIM	146.87055	143.69991	1938.66237	1938.16362	2.67189
NTPC	88.56604	81.33886	2851.49655	2851.55556	7.28619
NHPC	0.00000	0.00000	1219.73203	1214.97601	-4.75602
Pool Balance	0.00000	0.00000	985.30002	985.31731	0.01729
Additional UI charge	2320.58622	1314.55152	580.97648	0.00000	1006.03470
Transfer to IRE	0.00000	0.00000	551.67560	581.52578	29.85018
TOTAL	145783.12503	144113.75363	143455.92115	144284.12412	

% Realization

98.85

As on 22.11.10

Receivable:

Receivable by ER POOL

Payable

Payable by ER POOL

Received

Received by ER POOL

Paid

Paid by ER POOL

"- ve" Payable by ER pool

"+ ve" Receivable by ER pool

Annexure - VI

TOTAL IRE AMOUNT TO BE DISTRIBUTED AMONGST ER CONSTITUENTS = Rs			11852304
BENEFICIARIES	Weighted Average Share from 28.05.07 to 01.07.07	APPORTIONED AMOUNT	Rs.
BSEB	0.35844	4248393	
JSEB	0.08183	969930	
DVC	0.03790	449164	
GRIDCO	0.21602	2560344	
SIKKIM	0.02362	279964	
WBSEB	0.28218	3344509	
TOTAL	1.00000	11852304	

Annexure - VII

**STATUS OF REACTIVE CHARGES IN ER REACTIVE POOL AS PER PUBLISHED A/C UPTO 31.10.10
AS ON 09.11.10**

Figures in Rs

CONSTITUENTS	2003-04		2004-05		2005-06		2006-07		2007-08		2008-09		2009-10		2010-11		TOTAL	
	RECEIVABLE	RECEIVED	RECEIVABLE	RECEIVED	RECEIVABLE	RECEIVED	RECEIVABLE	RECEIVED	RECEIVABLE	RECEIVED	RECEIVABLE	RECEIVED	RECEIVABLE	RECEIVED	RECEIVABLE	RECEIVED	RECEIVABLE	RECEIVED
BSEB	0	0	0	0	0	0	284950	0	0	0	0	0	0	0	0	0	284950	0
DVC	6593	6593	86391	86391	264138	264138	0	0	0	0	0	0	0	0	0	0	357122	357122
GRIDCO	0	0	0	0	0	0	0	0	0	0	223311	223311	0	0	0	0	223311	223311
WBSEB	1778848	1778848	451090	451090	350045	350045	3519490	3519490	881058	881058	3716019	3716019	3431470	3431470	1273089	0	15401109	14128020
UPPCL	0	0	0	0	0	0	28575	8465	0	0	0	0	0	0	0	0	28575	8465
TOTAL	1785441	1785441	537481	537481	614183	614183	3833015	3527955	881058	881058	3939330	3939330	3431470	3431470	1273089	0	16295067	14716918

Total Received	14716918
Expenditure incurred for organising workshop on Black Start Procedure (4 SLDCs)	160000
Expenditure incurred for organising a seminar on Power Exchange	290000
Expenditure incurred for organising seminar on "Reduction of Agreed technical & commercial Loss-Issues and Challenges " at Bhubaneswar	184991
Expenditure incurred for organising workshop on Black Start Procedure at ERPC on 19.11.09	123028
Expenditure incurred for organising a seminar on Black Start on 18.04.09 at Hotel Big Boss	49050
Amount Retained in Reactive A/C	13909849
Waival of UPPCL amount on 14 th commercial sub committee meeting on 10.09.10	20110
Net Retained in Reactive A/C	13889739

STATEMENT OF IRE BETWEEN SR AND ER FOR 2010-11

Figures in Rs. Lac

WEEK NUMBER	DATE		Payable(-)/Recvl(+) by ER Pool as per ERPC-UI Account	Payable(-)/Recvl(+) by ER Pool as per SRPC UI A/C	IRE AMOUNT TO BE KEPT IN ER IRE A/C	IRE AMOUNT TO BE KEPT IN SR IRE A/C
	FROM	TO				
WEEK- 01	29-Mar-10	04-Apr-10	200.85528	507.58538	0.00000	306.73010
WEEK- 02	5-Apr-10	11-Apr-10		-61.61926	33.70548	0.00000
WEEK- 03	12-Apr-10	18-Apr-10	-645.16482	-497.86799	147.29683	0.00000
WEEK- 04	19-Apr-10	25-Apr-10	-520.66107	-381.07580	139.58527	0.00000
WEEK- 05	26-Apr-10	2-May-10	-700.70398	-439.76578	260.93820	0.00000
WEEK- 06	3-May-10	9-May-10			0.00000	0.00000
WEEK- 07	10-May-10	16-May-10			0.00000	0.00000
WEEK- 08	17-May-10	23-May-10			0.00000	0.00000
WEEK- 09	24-May-10	30-May-10			0.00000	0.00000
WEEK- 10	31-May-10	6-Jun-10			0.00000	0.00000
WEEK- 11	7-Jun-10	13-Jun-10			0.00000	0.00000
WEEK- 12	14-Jun-10	20-Jun-10			0.00000	0.00000
WEEK- 13	21-Jun-10	27-Jun-10			0.00000	0.00000
WEEK- 14	28-Jun-10	4-Jul-10			0.00000	0.00000
WEEK- 15	5-Jul-10	11-Jul-10			0.00000	0.00000
WEEK- 16	12-Jul-10	18-Jul-10			0.00000	0.00000
WEEK- 17	19-Jul-10	25-Jul-10			0.00000	0.00000
WEEK- 18	26-Jul-10	1-Aug-10			0.00000	0.00000
WEEK- 19	2-Aug-10	8-Aug-10			0.00000	0.00000
WEEK- 20	9-Aug-10	15-Aug-10			0.00000	0.00000
WEEK- 21	16-Aug-10	22-Aug-10			0.00000	0.00000
WEEK- 22	23-Aug-10	29-Aug-10			0.00000	0.00000
WEEK- 23	30-Aug-10	5-Sep-10			0.00000	0.00000
WEEK- 24	6-Sep-10	12-Sep-10			0.00000	0.00000
WEEK- 25	13-Sep-10	19-Sep-10			0.00000	0.00000
WEEK- 26	20-Sep-10	26-Sep-10			0.00000	0.00000
WEEK- 27	27-Sep-10	3-Oct-10			0.00000	0.00000
WEEK- 28	4-Oct-10	10-Oct-10			0.00000	0.00000
WEEK- 29	11-Oct-10	17-Oct-10			0.00000	0.00000
WEEK- 30	18-Oct-10	24-Oct-10			0.00000	0.00000
WEEK- 31	25-Oct-10	31-Oct-10			0.00000	0.00000
WEEK- 32	1-Nov-10	7-Nov-10			0.00000	0.00000
WEEK- 33	8-Nov-10	14-Nov-10			0.00000	0.00000
WEEK- 34	15-Nov-10	21-Nov-10			0.00000	0.00000
WEEK- 35	22-Nov-10	28-Nov-10			0.00000	0.00000
WEEK- 36	29-Nov-10	5-Dec-10			0.00000	0.00000
WEEK- 37	6-Dec-10	12-Dec-10			0.00000	0.00000
WEEK- 38	13-Dec-10	19-Dec-10			0.00000	0.00000
WEEK- 39	20-Dec-10	26-Dec-10			0.00000	0.00000
WEEK- 40	27-Dec-10	2-Jan-11			0.00000	0.00000
WEEK- 41	3-Jan-11	9-Jan-11			0.00000	0.00000
WEEK- 42	10-Jan-11	16-Jan-11			0.00000	0.00000
WEEK- 43	17-Jan-11	23-Jan-11			0.00000	0.00000
WEEK- 44	24-Jan-11	30-Jan-11			0.00000	0.00000
WEEK- 45	31-Jan-11	6-Feb-11			0.00000	0.00000
WEEK- 46	7-Feb-11	13-Feb-11			0.00000	0.00000
WEEK- 47	14-Feb-11	20-Feb-11			0.00000	0.00000
WEEK- 48	21-Feb-11	27-Feb-11			0.00000	0.00000
WEEK- 49	28-Feb-11	6-Mar-11			0.00000	0.00000
WEEK- 50	7-Mar-11	13-Mar-11			0.00000	0.00000
WEEK- 51	14-Mar-11	20-Mar-11			0.00000	0.00000
WEEK- 52	21-Mar-11	27-Mar-11			0.00000	0.00000
TOTAL			-1760.99933	-872.74345	581.52578	306.73010

IRE AMOUNT PAYABLE TO SR BY ER FOR WEEK 01 TO 05 290.76289

IRE AMOUNT PAYABLE TO ER BY SR FOR WEEK 01 TO 05 153.36505

**NET AMOUNT PAYABLE TO SR BY ER FOR WEEK 01 TO 05
of 2010-11 137.39784**IRE AMOUNT REQUIRED FOR DISTRIBUTION AMONGST ER
CONSTITUENTS FOR WEEK 01 TO 05 444.12794

Total Amount in IRE A/C 581.52578

Annexure-IX

All fig in Rs Lakhs

**Total Amount Accumulated as per accounts (After 01.11.2010)
After payment to PSDF**

Year	Capping		Surcharge	
	As per accounts	As per actual	As per accounts	As per actual
2010 - 11	9.88896	9.90625	5.58495	5.58495
Total	9.88896	9.90625	5.58495	5.58495

REPORT OF OPENING OF LC IN EASTERN REGION (Status As on 15.11.10)

Sl. No	Name of ER Pool members	Letter issued by ERLDC to Open LC	LC Amount (Lakhs of Rupees)	Status	Response from Pool Members	Remarks
1	BSEB	Yes	361.54	LC not opened	Nil	No intimation is received
2	JSEB	Yes	142.74	LC not opened	Nil	No intimation is received
3	DVC	Yes	0.00	LC not required		
4	GRIDCO	Yes	696.71	LC opened	LC Opened	
5	WBSETCL	Yes	49.38	LC opened	LC Opened	
6	SIKKIM	Yes	14.47	LC opened	LC opened	
7	NTPC	Yes	0.00	LC not required		
8	NHPC	Yes	0.00	LC not required		

**EXTRACT OF NTPC LIMITED LETTER NO. 01:CD:401 DATED 13.10.2010 ADDRESSED TO
MEMBER SECRETARY, ERPC, 14 GOLF CLUB ROAD, KOLKATA.**

Sub: Regional Energy Account issued by ERPC

Sir,

This is with reference to the Regional Energy Account (REA) issued in eastern region by ERPC for the month of Sep'2010. The REAs in eastern region are also indicating the corresponding capacity charges payable by the beneficiaries of central sector generating stations in addition to their percentage share allocation detail for the month. It is noted that the above apportionment of Annual Fixed Charges (AFC) has been carried out in the REA by considering the tariff norms of CERC Tariff Regulations, 2009.

We would like to submit that, in line with the Proviso (3) of Regulation 5 of CERC tariff Regulations, 2009, NTPC has been raising bills to its beneficiaries for capacity charges, in respect of tariff for supply of electricity from its stations, as approved by CERC and applicable as on 31.03.2009 for the period beyond 1.4.2009 till the tariff of the corresponding station is approved in accordance with these regulations. The bills on this basis are accepted by NTPC customers in all the regions including eastern region.

It may be noted that annual fixed charges indicated for Kahalgaon STPP-II in the above mentioned REA for Sep'2010 are not as per the tariff last determined by CERC. Since the tariff applicable in case of these stations is determined by CERC and is revised from time to time in accordance with various orders / judgments / directives of Hon'ble Commission / Hon'ble Tribunal, it is likely that effect of these in some cases may be missed as observed in case of Kahalgaon STPP-II.

The resulting variation in determination of capacity charge payable by beneficiaries due to such different reference / interpretation of CERC regulations / orders leads to avoidable misunderstanding with the beneficiaries. Further, the REAs in the other three regions namely NR, WR & SR are not indicating such capacity charge payable detail in respect of individual beneficiaries.

In view of the above, we would request that capacity charge payable detail for individual beneficiaries may not form part of eastern region REAs. The same will also being uniformity with the REAs issued by other regions.

With kind regards,

Yours sincerely,

Sd/- V.K. Padha
General Manager(Commercial)