

**EASTERN REGIONAL POWER COMMITTEE**

**14 GOLF CLUB ROAD, TOLLYGUNGE, KOLKATA-700 033**

**Phone: 033-24235199/24235005 # Fax : 033-24171358/24221802 # Web : www.eastrpc.org**

No. ERPC/COM-I/GEN/2011/1052-82

Dated : 25.02.2011

To : As per list

Sub : Minutes of 16<sup>th</sup> Commercial Sub- Committee meeting of  
ERPC held on 23.02.2011 at ERPC, Kolkata

Sir,

Enclosed please find minutes of the 16<sup>th</sup> Commercial Sub-  
Committee meeting of ERPC held on 23.02.2011 at ERPC, Kolkata.  
Observations / Amendments, if any, may please be furnished to ERPC  
for further necessary action.

Encl: As above

Yours faithfully,

**Sd/-**

**( J. Bandyopadhyay )**  
**Superintending Engineer (Comml)**

## **DISTRIBUTION LIST:**

- 1) CHIEF ENGINEER (TRANSMISSION / O&M), BSEB, Vidyut Bhawan, Bailey Road, PATNA – 800 021 (FAX:0612 2504557).
- 2) CHIEF ENGINEER (COMML.), DVC, DVC Towers, VIP Road, KOLKATA-700054 ( FAX: 033 2355 2129 )
- 3) CHIEF ENGINEER (COMML. & REVENUE ), JSEB, HEC Township, Dhurwa, RANCHI – 834 004 (FAX : 0651 2400799 / 2490486 ).
- 4) CHIEF ENGINEER (TRANS), DEPTT. OF POWER, GOVT. OF SIKKIM, Kazi Road, GANGTOK - 737101 (FAX:03592 202927/202284/209199).
- 5) CHIEF ENGINEER (COMML.), WBSEDCL, Bidyut Bhavan, Block-DJ, Sector-II, Salt lake, KOLKATA – 700 091(FAX : 033 2359 8398 )
- 6) GENERAL MANAGER (COMML.-ER), NTPC Ltd., Scope Complex, Core – 7, Lodi Road, NEW DELHI – 110 003 ( FAX: 011 2436 0328 )
- 7) AGM(COMML), ER-I, POWERGRID, Alankar Place, Boring Road, PATNA- 800001 (FAX: 0612 2227630 / 2228984 / 2234097 / 2230440)
- 8) GM (OS), ER-II, POWERGRID, J-1-15, Block-EP, Sector-V, Salt Lake, Kolkata-700 091 (FAX: 033 23572822)
- 9) CHIEF (FINANCE), COMMERCIAL DIVISION, NHPC Ltd., NHPC Office Complex, Sector-33, FARIDABAD – 121 003 ( FAX:0129 227 8009/2413/1419 ).
- 10) GM, ERLDC, 14, Golf Club Road, KOLKATA-700 033 (FAX: 033 2423 5029).
- 11) ASSTT. GENERAL MANAGER (F&A), FINANCE WING, OHPC, Orissa State Housing & Welfare Corporation Building, Vanivihar Chowk, Janpath, BHUBANESWAR – 751 022 (FAX:0674 2542102).
- 12) ADDL. CHIEF ENGINEER (OPS.), CESC LTD., CESC House – Annexe Building, Chowringhee Square, KOLKATA – 700 001 ( FAX : 033 2212 9871 ).
- 13) GENERAL MANAGER ( COMMERCIAL & OPERATIONS ), WBPDC, Bidyut Unnayan Bhavan, 3/C, Block – LA, Sector-III, Bidhannagar, KOLKATA – 700 098 ( FAX : 033 23350523/23393286).
- 14) SR. GENERAL MANAGER (FINANCE), OPGC, Zone – A, 7th Floor, Fortune Tower, Chandrasekharpur, Bhubaneswar – 751 023 ( FAX: 06645 222248 ).
- 15) DGM (ALDC), DPL, Admn. Building, Durgapur-713201 (FAX: 0343255-6786/6251)
- 16) DIRECTOR OF ACCOUNTS, TVNL, HINOO, DORANDA, RANCHI – 834 002 (FAX: 0651 2251296 / 2253181 ).
- 17) CHIEF OPERATING OFFICER, POWERLINKS TRANS. LTD, 4th Floor, Kanchenjunga Building, 18, Barakhamba Road, New Delhi-110 001 (FAX: 011 66306377)
- 18) MANAGING DIRECTOR, BIHAR RAJYA JALA VIDYUT NIGAM, SONE BHAWAN, VIRCHAND PATEL MARG, PATNA (FAX: 0612 2227692).
- 19) GENERAL MANAGER (R&T), OPTCL, JANPATH, BHUBANESWAR – 751022 (FAX: 0674 2542120).
- 20) SR.GENERAL MANAGER (PP), GRIDCO, 4TH FLOOR, BIDYUT BHAVAN, JANPATH, BHUBANESWAR – 751 022 ( FAX : 0674 2547180 / 2547261).
- 21) VICE PRESIDENT (COMMERCIAL), PTC, 2<sup>ND</sup> FLOOR, NBCC TOWER, BIKHAJI CAMA PLACE, NEW DELHI – 110 066 (FAX: 011 4165 9504 )
- 22) DY.MANAGER (TECH), DPSC LTD, Plot No. X-1,2 & 3, Block-EP, Sector-V, Salt Lake City, Kolkata-700 091 (FAX: 033 2357 3758/ 2452)
- 23) VICE-PRESIDENT (ER), TATA POWER CO. LTD, 24, Homi Modi Street, Fort, Mumbai-400001 (FAX: 022 66657966)
- 24) DIRECTOR (GM), CEA, SEWA BHAVAN, R.K.PURAM, NEW-DELHI (FAX: 011 26109750).
- 25) MEMBER SECRETARY, NERPC, MSHFCS Ltd, NONGRIM HILLS, SHILLONG – 793 003 ( FAX : 0364 2520030 ).
- 26) MEMBER SECRETARY, NRPC, 18A, SAHEED JSS MARG, NEW DELHI 110 016 (FAX : 011 2686 5206 / 26179049 ).
- 27) MEMBER SECRETARY, SRPC, 29, RACE COURSE ROAD, BANGALORE – 560 009 (FAX : 080 22259343 / 23119451 ).
- 28) MEMBER SECRETARY, WRPC, MIDC AREA, ANDHERI ( EAST ), MUMBAI – 400 093 ( FAX : 022 2837 0193 / 28389192 / 28250004 ).
- 29) DIRECTOR, ADHUNIK POWER & NATURAL RESOURCES LTD, CRESCENT TOWER, 3<sup>RD</sup> FLOOR, 229, AJC BOSE ROAD, KOLKATA-700 020. (FAX : 033-2289-0285)
- 30) CHAIRMAN, MAITHON POWER LTD, C-43, SECTOR-62, NOIDA-201307, UP. (FAX: 0120-6663093)
- 31) VICE-PRESIDENT (POWER), STERLITE ENERGY LIMITED, CITY MART COMMERCIAL COMPLEX, BARAMUNDA, BHUBANESWAR-751 003, (FAX: 0674-2354221 / 6610342)

**EASTERN REGIONAL POWER COMMITTEE  
14 GOLF CLUB ROAD, TOLLYGUNGE, KOLKATA-700 033**

Phone: 033-24235199/24235005 # Fax : 033-24171358/24221802 # Web : www.eastrpc.org

**MINUTES OF THE 16<sup>TH</sup> COMMERCIAL SUB-COMMITTEE  
MEETING OF ERPC HELD ON 23.02.2011 (WEDNESDAY) AT 1100  
HRS. AT ERPC, KOLKATA**

The list of participants is enclosed at **Annexure-‘A’**.

Shri A.K. Rampal, Member Secretary, ERPC welcomed the participants of the 16<sup>th</sup> Commercial Sub-Committee of ERPC. He thanked NTPC for synchronizing 2 units of TSTPP Stage-I. He noted that this would bring substantial relief to the beneficiaries of TSTPP Stage-I located in the Eastern Region. Thereafter, Shri Joydeb Bandyopadhyay, Superintending Engineer (Comml), ERPC took up the agenda items for discussions :

**ITEM NO. 1 CONFIRMATION OF THE MINUTES OF THE 15TH  
COMMERCIAL SUB-COMMITTEE MEETING HELD ON  
03.12.2010.**

The minutes of the 15<sup>th</sup> Commercial Committee meeting were circulated vide ERPC letter no. ERPC/COM-I/GEN/2010/7035-64 dated 06/07.12.2010. No comments have been received by ERPC Secretariat.

Members may confirm these minutes.

**Deliberations in the Meeting**

**Members confirmed the minutes of the 15<sup>th</sup> Commercial Sub-Committee meeting held on 03.12.2010.**

**ITEM NO. 2 A) PAYMENT OF UI -- PRESENT STATUS**

The status of UI payment for 2010-11 as on 30.01.11 as submitted by ERLDC is enclosed at Annexure – I.

Maithon Power Limited has been considered as an UI Pool member and its UI account is being generated with effect from 06.01.2011.

This is for the information of the members.

**Deliberations in the Meeting**

**Members noted.**

**It was informed by ERLDC that an amount of ₹531.74 Lakhs remains outstanding against JSEB and an amount of ₹355.49 Lakhs against Sikkim. ERLDC requested JSEB and Sikkim to liquidate the outstanding dues immediately.**

**MPL informed that the amount shown as outstanding against MPL has already been liquidated. ERLDC confirmed this.**

**B) DISTRIBUTION OF INTEREST DUE TO DELAYED PAYMENT OF UI TO THE CONSTITUENTS**

As informed by ERLDC, GRIDCO has paid an amount of **₹62.68 Lakhs** as delayed payment interest of 2009-10. As the payable amount was already disbursed from additional surcharge fund, the amount of **₹62.68 Lakhs** was replenished as additional UI charge and has been shown separately. **With this payment, UI account of 2009-10 is fully settled.**

Members may please note.

**Deliberations in the Meeting**

**Members noted.**

**C) DISTRIBUTION OF IRE FOR TRANSACTION BETWEEN ER AND SR FROM 29.03.10 TO 02.05.10 (01 TO 05 WEEK) OF 2010- 11**

As submitted by ERLDC, IRE Account between ER & SR has already been settled up to week 5 of 2010-11. From 1<sup>st</sup> week to 5<sup>th</sup> week of 2010–11, UI amount payable/receivable as per ERPC and as per SRPC A/C is shown in the enclosed Annexure - II. The IRE generated for difference in the two accounts is also shown in the Annexure - II. As can be seen from the Annexure - II, for the period from 29.03.10 to 02.05.10 (i.e. from 1<sup>st</sup> week to 5<sup>th</sup> week of 2010-11) IRE amount was kept in ER IRE A/C was **₹581.53 Lakhs** and IRE amount disbursed to SR IRE A/C from ER IRE a/c was **₹137.40 Lakhs**. Thus the two accounts have been reconciled between ERLDC and SRLDC. The balance amount of **₹440.44 Lakhs** after adjustment for DVC (**₹0.84 Lakhs** on account of UI charge for 2008-09) and BSEB (**₹2.85 Lakhs** on account of reactive charge for 2006-07) has been transferred to POWERGRID for giving transmission credit to ER constituents. The details of transmission credit given to the constituents are enclosed in Annexure – III. **This settles IRE A/C between ER & SR for the year 2010-11.**

Members may please note.

**Deliberations in the Meeting**

**Members noted.**

**D) REACTIVE ENERGY CHARGES – PRESENT STATUS.**

The updated position of Receipt/Payment of Reactive Energy Charges in the pool as on 10.02.2011 considering bill up to 31.01.2011 as received from ERLDC is indicated in Annexure – IV.

In the 15<sup>th</sup> Commercial Sub-Committee meeting BSEB was requested to clear their outstanding due amount of **₹2.85 Lakhs** on account of Reactive Energy Charges for the weeks from 04.09.2006 to 10.09.2006 and from 02.10.2006 to 08.10.2006. The issue has been settled by ERPC, ERLDC and BSEB. There is no outstanding due on account of ER Reactive Energy Pool charges as on 31.01.2011.

Members may please note.

#### **Deliberations in the Meeting**

**Members noted.**

#### **E) POOL BALANCE DUE TO CAPPING/ADDITIONAL UI CHARGE**

The details of Pool Balance due to capping and additional UI charges after disbursement to PSDF as intimated by ERLDC are enclosed in Annexure - V. Thus total amount of **₹54.43 Lakhs** is available as capped amount as on date and the total amount of **₹67.87 Lakhs** is also available as additional UI charge as on date. Moreover, an amount of **₹62.68 Lakhs** is also available which is paid by GRIDCO as delayed payment surcharge for 2009-10.

This is for information to the members.

#### **Deliberations in the Meeting**

**Members noted. ERLDC informed that as per the latest instruction received by ERLDC, amount remaining in the pool balance due to capping and additional UI charges are to be transferred to PSDF every month.**

#### **F) RECONCILIATION OF UI POOL ACCOUNT**

The statement of reconciliation of UI account for the period from April 2010 to September 2010 have been sent to all constituents by ERLDC for checking at their end and for confirmation. It has been informed by ERLDC that no confirmation has been received from BSEB, JSEB and Sikkim. Reminders have also been issued by ERLDC to them for confirmation.

#### **Deliberations in the Meeting**

**JSEB, BSEB and Sikkim have been requested to confirm the statement. It was further decided that if no confirmations are given by the concerned constituents within 23.03.2011, it would be presumed that the statement of reconciliation of UI account for the period from April, 2010 to September, 2010 sent to the above constituents by ERLDC deemed to be in order.**

### **ITEM NO. 3 IMPORT OF POWER BY BHUTAN VIA 132 KV GELEPHU-SALAKATI**

In the Regional Energy Account issued by ERPC in the month of January 2011, the export of power from Kurichu HPS of Bhutan was shown as 33440.487 MWH as per the meter reading submitted by POWERGRID.

POWERGRID vide their letter no. NESH/Comml/N-18/617 dated 08.02.2011 intimated revision of meter reading for 132 KV Gelephu-Salakati line. It has been observed from revised meter reading data that Bhutan had actually imported energy of 2509.74 MWH.

In absence of any suitable commercial arrangement for import of power by Bhutan, the billing statement for Bhutan Export at Gelephu in the Regional Energy Account (REA) for January, 2011 issued by ERPC had been withdrawn vide letter no. ERPC/ COM-I /REA/2011/9002-06 dated 11.02.2011.

It is suggested that the import of power by Bhutan to the tune of 2509.74 MWH may be adjusted in subsequent months when there would be adequate net export of power from Bhutan since there is no suitable commercial arrangement for import of power by Bhutan.

Members may like to discuss.

**Agenda stood withdrawn.**

### **ITEM NO. 4 METERING ISSUES IN 132 KV SALAKATI-GELEPHU LINE**

In the 58<sup>th</sup> OCC meeting, it was intimated by BPC that, in the 132 kV Salakati-Gelephu line, presently Bhutan meters are taken as main meters and PGCIL meters are taken as standby meter. As Bhutan meters are suspected to be erroneous, BPC requested to take PGCIL meter as main meter.

The issue was referred to Commercial Sub-committee by OCC.

ERPC vide letter no.ERPC/COM-I/GEN/2011/ dated 15.02.2011 (Fax Msg No. 34) had requested POWERGRID and PTC to look into the matter and intimate the Commercial Sub-Committee regarding the actions to be taken in this regard.

POWERGRID and PTC may inform the latest status.

Members may discuss.

**Agenda stood withdrawn.**

### **ITEM NO.5 LESS REGISTRATION AT 132 KV MAITHON-JAMTARA TIE FLOW FROM 23.09.2007 TO 03.12.2007**

In accordance with the decision of the 16<sup>th</sup> ERPC meeting, a meeting was convened at ERPC, Kolkata on 18.01.2011 between JSEB, DVC and

ERPC. In the meeting DVC apprised JSEB and ERPC regarding the issue. After thorough deliberation, the model of calculation was decided, which was agreed unanimously by JSEB, DVC and ERPC. DVC and JSEB agreed to place the model of calculation to their respective management and also to obtain the approval from them within 21.02.2011. After obtaining the approval, ERPC will issue necessary statement of UI accounts for JSEB and DVC for the above period.

In the meanwhile DVC vide letter no. COM/ERPC-3157 dated 17.02.2011 intimated that the formula proposed in the meeting dated 18.01.2011 has been approved by DVC.

JSEB and DVC may please furnish the latest status.

**Deliberations in the Meeting**

**It was informed that ERPC Secretariat had written to JSEB for furnishing the approval from JSEB authorities regarding acceptance of the methodology decided in the meeting among JSEB, DVC and ERPC on 18.01.2011. It was decided that JSEB would be again reminded.**

**ITEM NO. 6 FUEL PRICE ADJUSTMENTS (FPA) FOR NTPC STATIONS IN EASTERN REGION**

The trend of FPA for different Power Stations of NTPC in Eastern Region for the last few years is shown in Annexure - VI .

This is for information of the members.

**Deliberations in the Meeting**

**Members noted.**

**ITEM NO. 7 METERING ARRANGEMENT FOR KAHALGAON STAGE-I & II.**

In the 16<sup>th</sup> ERPC & TCC meetings, NTPC proposed to bring a composite proposal for separate metering of Kahalgaon Stage I & II.

A meeting was also held on 25.01.2011 between ERPC, ERLDC & NTPC and the issue of separate metering of Khalgaon Stage I & II. was discussed. Accordingly, NTPC has submitted a proposal vide their Fax Msg No. REF:041:OSER dated 11.02.2011 which is furnished below :

AG Stage I =  $(GT\ 1+GT\ 2+GT\ 3+GT4) * \text{Sum of all outgoing feeders} / (GT\ 1+GT\ 2+.....+GT\ 7)$

AG Stage II =  $(GT\ 5+GT\ 6+GT\ 7) * \text{Sum of all outgoing feeders} / (GT\ 1+GT\ 2+.....+GT\ 7)$

As per the decision of the 15<sup>th</sup> TCC meeting, NTPC has also submitted an agenda point regarding this issue in the 59<sup>th</sup> OCC meeting to be held on

22.02.2011. The decision of the OCC will be placed for further discussion in the 16<sup>th</sup> Commercial Sub-Committee meeting.

Members may please discuss.

**Deliberations in the Meeting**

**It was informed by ERPC Secretariat that in the 59<sup>th</sup> OCC meeting held on 22.02.2011, the issue of metering arrangement for Kahalgaon Stage-II was deliberated in details. It was decided to adopt this proposal as an interim measure. However, NTPC is to develop a scheme for segregation of two Stages of Kahalgaon. NTPC should develop similar scheme for Farakka and Barh also.**

**Members noted.**

**ITEM NO.8 INDICATION OF CAPACITY CHARGES IN REGIONAL ENERGY ACCOUNT ISSUED BY ERPC (ITEM C22 OF LAST ERPC MEETING)**

This issue was first deliberated in 15<sup>th</sup> Commercial Sub-Committee of ERPC (Item No.5) wherein it was decided to refer the issue to TCC.

TCC again referred this issue to Commercial Sub-Committee meeting for detailed discussion.

Members may please discuss.

**Deliberations in the Meeting**

**After deliberation, NTPC and ERPC Secretariat agreed to resolve the matter mutually with the underlined principle of maintaining transparency and urge to reveal the information. The agenda would not be posed to TCC.**

**ITEM NO.9 SCHEDULING OF MEJIA – B (2 X 500 MW) POWER STATION**

In the 16<sup>th</sup> ERPC meeting it was decided that Mejia – B shall be considered as a separate control area and its scheduling shall be done by ERLDC as per the provisions of IEGC.

ERLDC informed that the metering requirement of the power station has already been examined at their end and proposed metering scheme of Mejia-B has also been forwarded to DVC for further necessary action. It was informed to DVC by ERLDC that –

- i) DVC/MEJIA may interact with POWERGRID, ERTS-II for installation of additional meters (check and standby).
- ii) Being a separate Notional Control Area, the accounting of Mejia-B to be carried out by ERPC and Mejia-B shall be considered as a member of ER UI Pool Account. Therefore, DVC/MEJIA may

submit information in respect of Bank Account Number, Client Code, etc.

DVC may please furnish the latest status.

**Deliberations in the Meeting**

**DVC agreed to furnish the latest status to ERLDC shortly. DVC was requested to expedite the process of completing the metering requirements of the power stations.**

**ITEM NO.10 CENTRAL SECTOR SHARE ALLOCATION FOR ISGS STATIONS IN EASTERN REGION**

The latest Central Sector Share Allocations in vogue for different ISGS Stations in Eastern Region including surrendered shares from DVC are given in Annexure - VII.

This is for information of the members.

**Deliberations in the Meeting**

**Members noted.**

**ITEM NO.11 COMMERCIAL DECLARATION PGCIL ELEMENTS**

**A) COD of 125 MVAR Bus Reactor-II at New Purnea**

125 MVAR Bus Reactor-II at New Purnea S/S under ERSS-II has been declared under Commercial Operation by PGCIL w.e.f **01.02.2011** (PGCIL letter No-E/PT/ED(ER-I)/8019 dated 28.01.2011) as per CERC regulation 2009.

**B) COD of LILO connectivity to DVC ANDAL TPS through PGCIL 400 KV D/C Durgapur-Jamshedpur TL associated with ERSS-I**

LILO connectivity to DVC ANDAL TPS through PGCIL 400 KV D/C Durgapur-Jamshedpur TL associated with ERSS-I had been declared under commercial operation by PGCIL (PGCIL letter No-ER-II/KOL/Comml/6124 dated-31.01.2011) **with effect from 01.02.2011** as per CERC Regulation, 2009-14.

**C) COD of 400 KV Ranchi-Rourkela D/C Line**

400 KV Ranchi-Rourkela D/C Line along with associated bays has been declared under commercial operation **with effect from 01.12.2010** as per CERC regulation, 2009 by PGCIL (Letter No-E/PT/OS/332/6700 dated 01.12.2010).

POWERGRID is required to furnish certain information in agreed prescribed format as per decision taken in the 7<sup>th</sup> Commercial Sub-Committee meeting. This has also been intimated to POWERGRID vide

ERPC letter no. ERPC/COM-I/GEN/2011/ dated 15.02.2011 (Fax Msg No. 33).

POWERGRID may furnish the information.

Members may please note and discuss.

**Deliberations in the Meeting**

**In the meeting POWERGRID furnished the requisite information which is given in Annexure – ‘B’. This was also circulated among the participants in the meeting.**

**Commercial Sub-Committee recommended to TCC for acceptance of the COD of the above transmission elements.**

**ITEM NO.12 TRANSMISSION CHARGES THROUGH BOTH METHODOLOGIES -- PRESENT REGIONAL POSTAGE STAMP METHOD AND POINT OF CONNECTION**

NLDC has uploaded at their site [www.nldcindia.in](http://www.nldcindia.in) on 01.02.2011, the transmission charges based on the present regional postage stamp method and point of connection as per CERC (Sharing of Inter State Transmission Charges & Losses), Regulations, 2010. The portion pertaining to ER has been indicated below for perusal of the members.

Sl. No.	Name of DIC's	Charges by POC method	Existing Charges (postage stamp)	Increase in Transmission Charges	% increase in Transmission Charges
		(Rs.Crs/month)	(Rs.Crs/month)	(Rs.Crs/month)	(%)
	A	B	C	D	E
1	BIHAR	31.53	23.43	8.11	34.61
2	JHARKHAND	9.89	6.97	2.92	41.89
3	DVC	3.79	2.21	1.58	71.49
4	ORISSA	16.38	14.28	2.10	14.71
5	WEST BENGAL	19.66	16.80	2.86	17.02
6	SIKKIM	2.39	1.97	0.43	21.83
7	POWERGRID (ER)	0.023	0.016	0.007	43.75
8	Total	83.68	65.67	18.01	27.43

- NOTE
1. Charges attributable on drawee utilities on account of Generators has been included in the above figure in column B
  2. POC charges calculated based on Ex-PP LTA's whereas existing charges are based on Gross LTA

Members may like to note and discuss.

### **Deliberations in the Meeting**

**Members noted the existing charges and the charges by POC method as brought out by NLDC. Beneficiary constituents informed that the existing charges shown under postage stamp were on the higher side. Further, there has been substantial increase of transmission charges on the beneficiary constituents of the Eastern Region based on new methodology. Many constituents brought out a number of other observations on the issue of sharing of the transmission charges based on the new regulation. It was suggested that the individual constituent should make in depth study of methodology being followed for computation of transmission charges vis-à-vis the CERC regulation and bring into the attention of CERC, NLDC, Implementation Committee and Validation Committee any discrepancy found therein. The observations should reach NLDC by 02.03.2011 as the next meeting of the Implementation Committee is scheduled on 03.03.2011.**

### **ITEM NO.13 ISSUES RAISED BY ERLDC**

#### **A) Opening of LC by ER constituents for UI payments**

It has been intimated by ERLDC that, as per the Unscheduled Interchange charges and related matters (Amendment) Regulations, 2010 issued by CERC vide notification No. L-1(1)/2009-CERC dated 28<sup>th</sup> April, 2010 (effective from 03.05.10), the status report in respect of opening of LCs is being furnished to CERC periodically by ERLDC (the latest status is shown in Annexure - VIII). During the last financial year, no LC was opened by BSEB and JSEB. However, with the completion of 2010–11, the new amount of LC to be opened by different constituents shall be informed by ERLDC in due course.

Members may please note.

### **Deliberations in the Meeting**

**ERLDC informed that BSEB and JSEB have not opened the LC. Both have been requested to expedite the process of opening of required LC.**

#### **B) Non Receipt of SEM Data**

##### **1. JSEB**

It has been intimated by ERLDC that, since 22.02.10, SEM readings from JSEB substations for JSEB tie lines are not being received at ERLDC. The matter had been discussed in various fora of TCC/ERPC wherein it was intimated by JSEB that they would take expeditious action in this regard. ERLDC has informed that nothing has been done so far and entire computation is being done considering the meter readings of other ends.

JSEB may intimate the latest status.

## **Deliberations in the Meeting**

**In the absence of JSEB representative, the issue could not be discussed. It was decided to refer to TCC to bring it to the attention of TCC members of JSEB.**

### **2. Meters / DCD and Accessories for Malbase Sub-Station**

ERLDC received a letter from Malbase S/s, Bhutan regarding non-functioning of DCD. The matter was discussed in the last meeting held at ERPC on 25.10.2010 with ERTS – II, POWERGRID, ERPC and ERLDC wherein it was decided that PTC in coordination with POWERGRID would arrange providing meters to BPC and the cost of such meters/DCD would be borne by PTC. In view of the above mentioned exigencies, it is requested that PTC may take up the matter with POWERGRID for keeping a provision of 2 – 3 nos. of DCDs along with optical cord and Meters (A-Type) as spares for Bhutan system on an urgent basis.

Downloading of meter data and its transmittal to ERLDC is of utmost importance. PTC may be requested to take immediate measures for arranging the above meters with DCDs along with optical cord so that downloading of metered data may be transmitted to ERLDC every week without fail.

As per the decision of last Commercial Sub-Committee meeting, ERPC Secretariat had already requested both POWERGRID and PTC for urgent action in this regard.

PTC and POWERGRID may please indicate the latest status.

Further, as per the decision of 16<sup>th</sup> ERPC meeting held on 18.12.2010, POWERGRID was authorized to purchase 25 nos. of DCDs.

POWERGRID may please indicate the latest status.

## **Deliberations in the Meeting**

**It was informed by PTC that the issue would be settled by PTC, POWERGRID and BPC themselves.**

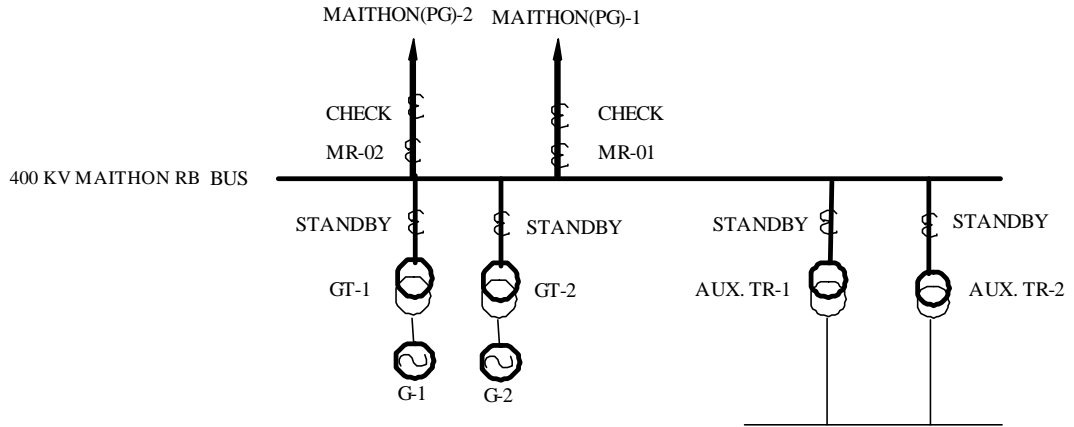
**POWERGRID informed that the process of procurement of 25 nos. of spare DCD has already been initiated.**

### **C) Metering Arrangements of Various IPPs**

#### **i) MPL (Maithan Power Limited)**

The metering requirement of the MPL (Maithan Power Limited) and SEL (Sterlite Energy Limited) has already been examined by ERLDC as per

CEA metering regulation 2006 and its amendments, the scheme of which is shown below:



ERLDC has observed that, being a separate Notional Control Area, the UI accounting of Maithon Right Bank is being carried out by ERPC and Maithon Power Limited has become a regional UI pool member. The station has started drawing start-up power and on its commissioning scheduling would be done by ERLDC as per the provisions of IEGC.

Members may please note.

**Deliberations in the Meeting**

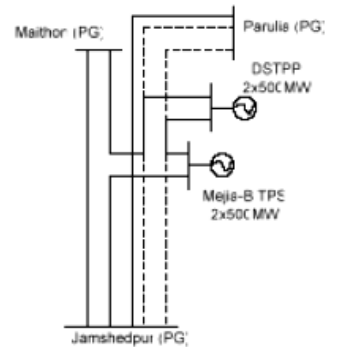
**Members noted.**

**ii) DSTPP (Andal)**

400 KV Maithan – Mejia S/C has been made LILO at DSTPP (DVC) to draw start up power at 2X500 MW Durgapur STPP (Andal). The line had already been charged on 26.01.11 and Special Energy Meters (SEM) installed at DSTPP (Andal) end of 400 KV Maithan – DSTPP line and 400 KV Mejia – DSTPP line.

Special Energy Meters (SEM) are to be installed at following substations.

- 400 KV Maithan – DSTPP line  
(Two Meters - one main & one check)
- 400 KV Mejia – DSTPP line  
(Two Meters - one main & one check)



ERLDC may please further elaborate.

**Deliberations in the Meeting**

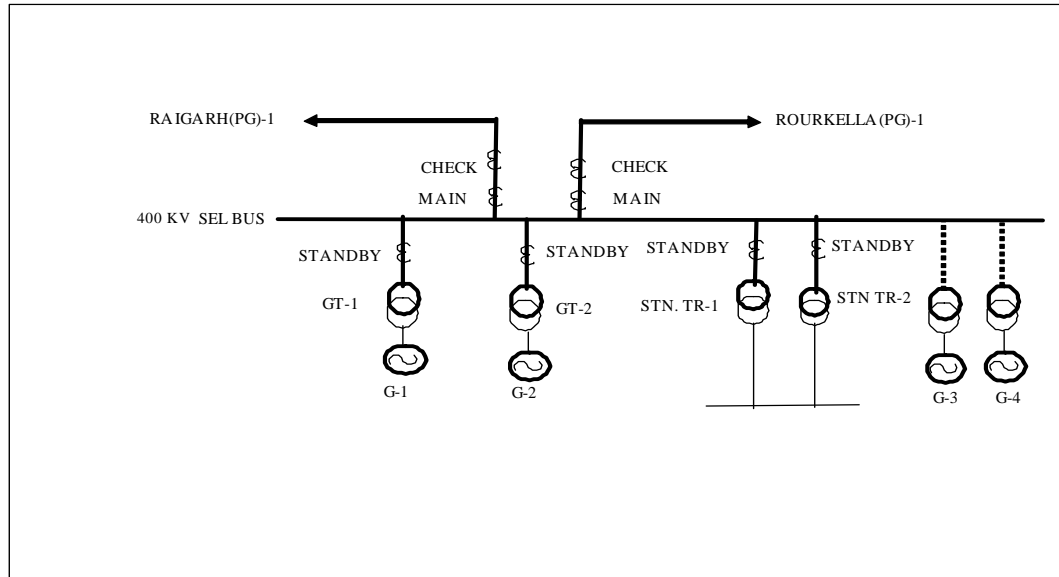
**It was decided that ERLDC would co-ordinate with POWERGRID and DVC for installation of the meters.**

**iii) SEL (Sterlite Energy Limited)**

ERLDC has observed that, as per the provision of IEGC, with synchronization of second unit of Sterlite, the control area jurisdiction of the said plant/unit may fall under the jurisdiction of ERLDC when accounting of Sterlite would be carried out by ERPC and Sterlite would also be a regional UI pool member.

For metering arrangement, 8 nos. of ABT compliant meters have to be installed at Sterlite for computation of any injection / drawal by Sterlite Energy Limited (SEL), two no meters (one Main & One Check) at Sterlite end of 400 KV Raigarh – Sterlite line and two no Meters (one Main & One Check) at Sterlite end of 400 KV Sterlite - Rourkella line. Two Meters are required to be installed at HV side of GT (at present for units 1 & 2) and one meter at HV side for each of the Station Aux Transformer.

**METERING ARRANGEMENT AT  
STERLITE (4X600 MW)**



Necessary advice has already been communicated by ERLDC to CTU for providing meters to M/s Sterlite.

ERLDC may please further explain.

Powergrid/Sterlite may inform the status of installation of these meters.

**The agenda stood withdrawn.**

**iv) 66 KV Rangit – Rabangla Line**

ERLDC stated that, during the last Standing Committee meeting approval was accorded for converting 66 KV Rangit –Melli line to (i) 66 KV Rangit – Rabangla line and (ii) 66 KV Melli – Rabangla line. With the changed

configuration the tie line now should be considered as 66 KV Rangit – Rabangla line instead of 66 KV Rangit –Melli line. Sikkim/Powergrid may initiate action of shifting of Melli end meter to Rabangla for 66 KV Rangit – Rabangla Line.

Sikkim may arrange for sending of Rabangla end data for UI computation purpose.

### **Deliberations in the Meeting**

**Sikkim informed that they would co-ordinate with POWERGRID for shifting of Melli end meter to Rabangla.**

#### **D) Implementation of Automatic Meter Reading in Eastern Region**

The power system in country is organized in five electrical regions for operation purpose namely North, South, East, West and North-east. Eastern region consists of five states i.e. Bihar, Jharkhand, Orissa, West Bengal and Sikkim. Regional Load Despatch Centers are responsible for scheduling of drawal by the states/other regions and injection by ISGSs/PPs and their measurement of 15 mts blockwise MWH within and across the regions. Thus each of the states and ISGSs are considered as control areas and measurement of electric energy is being carried out by interface meters called Special Energy Meters (SEMs) installed at the peripheries of states/regions and at ISGSs as per the provision of Metering regulation notified by CEA. POWERGRID being Central Transmission Utility (CTU) is responsible for installation of SEMs throughout the region and ERLDC is responsible for collection and processing of the metered data for the purpose of Regional UI energy accounting

Presently, manual system is being used for reading meter data. For reading meter data, each meter has been provided with optical port. Meter data is being collected from the meter through a hand held device called Data Collecting Device (DCD) provided by the meter manufacturers. The data from DCD is dumped in a local PC through software. From PC, data in the form of encrypted binary files are sent to ERLDC as E-mail attachment for further processing at ERLDC end. These encrypted files collected from all the locations are converted to text files by using manufacturer provided software. After conversion, the data is validated, processed by using in house developed software and sent to ERPC (Eastern Regional Power Committee) for preparing weekly UI and reactive energy accounts.

With system size growing at a faster pace, meter data from a large number station has to be processed and manual downloading of meter data, its collection and onward transmittal would take a longer time. Besides the DCDs are prone to frequent defects/damages and site level repair for these items are not possible for which the data downloading vis-à-vis meter data processing at times becomes quite difficult. ERLDC, therefore, intends to

automate the entire process of meter-data reading and collection through AMR (Automatic meter data reading) system. AMR system once deployed will be utilized for collection of meter data from Special Energy Meters deployed by POWERGRID in various locations in Eastern Region. These locations are owned by POWERGRID or State Electricity Boards (SEBs) or Inter State Generating Stations (ISGS). At present about 475 meters are installed at about 115 locations geographically dispersed across Eastern Region covering the states of Bihar, Jharkhand, Orissa, West Bengal and Sikkim and at ISGSs. As mentioned earlier, 650 Nos of SEM is going to be installed for new elements coming years. As the number of SEM is going to increase manifold it is therefore all the more essential that the data be downloaded and transmitted automatically at ERLDC to optimize cost and time.

The proposed AMR scheme is to automate the task of data collection from each meter/location periodically and storing the same in a database (RDBMS like Oracle, MS SQL Server, My SQL etc). Data from the database will be used by separate software for validation and further processing. The basic block diagram of the indented AMR system is given in Annexure-IX.

NRLDC in association with NR-I had already finalized the technical specification for implementing AMR project in NR and it is in the process of tendering. This project may please be taken up by POWERGRID for implementation.

ERLDC may explain through presentation indicating estimated cost, specification, etc.

Members may discuss on the issue.

### **Deliberations in the Meeting**

**Representatives from Oracle and WIPRO gave a presentation highlighting the existing process of metered data acquisition system, proposed solution, cost and time involvement. During the inter-active session it emerged that, for installation of automatic meter reading system for 472 meters in the Eastern Region located at 113 places, estimated cost would be ₹8.6 Crores and the project duration would be approximately 6 months from the date of placement of order. It was also informed by them that they had already installed similar system in a number of places.**

**After deliberation, all constituents noted the distinct advantage the new methodology offers and unanimously underlined the need to adopt the new technology for automatic metered data acquisition system in place of existing manual system. Members also noted that SRPC and NRPC had already been initiated necessary action in this regard.**

**Members recommended to TCC for acceptance of the proposal for implementation of automatic metered data acquisition system in Eastern Region at an estimated cost of ₹8.6 Crores preferably by utilizing the fund available under PSDF.**

**E) PAYMENT FOR MAINTENANCE CONTRACT OF EMS / SCADA – ADDITIONAL AGENDA SUBMITTED BY ERLDC**

During the 8<sup>th</sup> SCADA O&M Committee meeting held at ERLDC on 25<sup>th</sup> January, 2011, the issue of non-payment of AMC charges by BSEB, JSEB and Sikkim was discussed. BSEB assured the house that all pending payments would be cleared by 15<sup>th</sup> February, 2011. However, payment for only one quarter, out of 3 quarters pending, was made by BSEB. Sikkim has made the payment of 4 quarters out of 5. The status of pending payments from the constituents is as under :

<b>Constituents</b>	<b>Pending for</b>	<b>Total (Rs.)</b>
<b>OPTCL</b>	Nil	Nil
<b>BSEB</b>	4 <sup>th</sup> and 5 <sup>th</sup> quarter and delay surcharge for all five quarters.	3394120
<b>WBSETCL</b>	Nil	Nil
<b>DVC</b>	Nil	Nil
<b>SIKKIM</b>	5 <sup>th</sup> quarter and delay surcharge for all five quarters.	69422
<b>JSEB</b>	4 <sup>th</sup> quarter and delay surcharge for 3 <sup>rd</sup> and 4 <sup>th</sup> quarters.	1454891

In view of such a serious issues of non-payment, it would not be possible for ERLDC to continue with the services being rendered by M/s AREVA. In order to maintain smooth AMC services at all the control centres, the constituents are once again requested to immediately clear all the pending payments and ensure timely payment in the balance period of AMC.

Members may please deliberate.

**Deliberations in the Meeting**

**Sikkim and BSEB informed that they would liquidate their outstanding shortly.**

**ITEM NO.14 ANY OTHER POINT WITH THE PERMISSION OF THE CHAIR.**

**A) FORMAT FOR INFORMATION ON COAL USED BY NTPC**

This issue was discussed in the 59<sup>th</sup> OCC meeting held on 22.02.2011, wherein NTPC representative was requested to intimate the Commercial Sub Committee members the format in which data regarding the sources

of coal and their costs that is being used for NTPC stations in ER could be furnished.

### **Deliberations in the Meeting**

**It was noted in the meeting that the format prepared by Orissa requires source-wise information of consumption of coal and cost therein. However, Member Secretary, ERPC suggested that NTPC should furnish category-wise information on quantity and cost of coal procured from linked mines, import and e-auction. For this NTPC should furnish the information in the same format as is being used by them for furnishing information to CERC for approval of tariff. However, proforma can be shortened deleting some portion as was indicated in the meeting.**

**NTPC agreed to explore the feasibility of providing information on this line keeping in view the transparency and willingness of NTPC to share the information with the constituents of Eastern Region.**

**Member Secretary, ERPC emphasized that this information is vital for processing NTPC bill with the same bench mark as is being used for making payment to private entities. Secondly it is equally important for the constituents to take power purchase decision.**

**NTPC was requested to revert back by 03.03.2011 and resolve the issue before the ensuing TCC meeting scheduled on 16.03.2011. The issue is not worth taking to TCC again.**

The meeting ended with a vote of thanks to the Chair.

**List of Participants in the 16<sup>th</sup> Commercial Sub-Committee meeting of ERPC held on 23.02.2011 at ERPC, Kolkata.**

**ERPC**

1. Shri A.K. Rampal, MS – in Chair
2. Shri Ankan Bandyopadhyay, SE(O)
3. Shri J. Bandyopadhyay, SE (Comml)
4. Shri B. Sarkhel, SE (PS)
5. Shri S.M. Jha, EE
6. Shri G. Ghosh, EE
7. Shri S.P. Datta, DGM (NTPC)
8. Shri Shyam Kejriwal, AEE
9. Shri Subhro Paul, AEE

**BSEB**

1. Shri S.K. Sen Gupta, ESE

**DVC**

1. Shri S. Ghosal, SE (Comml)

**WBSEDCL**

1. Shri M. S. Pal, CE
2. Shri Aniruddha Pradhan, DE

**WBSETCL**

1. Shri A. Nag

**NTPC**

1. Shri K.K. Sinha, AGM (Comml)
2. Shri Sanjoy Mishra, AGM (OS)
3. Shri Shyam Kumar, DGM (Comml)
4. Shri Rakesh Kumar, DGM (OS)
5. Shri Sudip Nag, DGM (O&M)
6. Shri P.K. Ghoshal, DGM (Com)

**OPTCL**

1. Shri Ajay Kr. Mohanty, GM (R&T)
2. Shri Prasant Kr. Panda, Manager

**GRIDCO**

1. Shri S.K. Mohanty, Manager (EI)
2. Shri N. Khan, L.O.

**POWERGRID**

1. Shri A.K. Verma, DGM (Comml)

**DPL**

1. Shri Susmit Kr. Roy, DGM (ALDC)

**SIKKIM**

1. Shri Dinesh Kharel, SE (SLDC), E&P Deptt.
2. Shri Pemba Lepcha, AE (EHV/ Tr.), E&P Deptt.

**PTC**

1. Shri H. De, V.P.

**ERLDC**

1. Shri D.K. Shrivastava, DGM
2. Shri G. Chakraborty, Chief Manager (EASS)
3. Shri P.S. Das, Chief Manager (OS)
4. Shri Nadim Ahmed, Engineer
5. Shri Roshan Jaiswal

**MAITHON POWER LTD.**

1. Shri Sanjay Jadhav, AGH (Comml.)

**STERLITE ENERGY LIMITED --- AS SPECIAL INVITEE**

1. Shri C.N. Singh, Sr. VP
2. Shri Manoj Rastogi, AVP
3. Shri A.K. Padhey, AVP

**WIPRO**

1. Shri Arjit Bohra, Solution Architect

**ORACLE**

1. Capt. Balaram Goswami, RSM
2. Shri Ramanj Pomidi, Principal Consultant

**INFORMATION CIRCULATED BY POWERGRID FOR COD AGAINST  
ITEM NO. 11**

**125 MVAR Bus Reactor II at New Purnea**

<b>DOC</b>	<b>01/02/2011</b>
<b>Name of Project</b>	<b>ERSS II</b>
<b>Approved Cost</b>	<b>Rs.1618.48 lakhs</b>
<b>Standing Committee – ER Reference</b>	<b>22/06/2006</b>
<b>EREB / ERPC Meeting Reference</b>	<b>2<sup>nd</sup> ERPC 28/08/2006</b>
<b>Sharing of Transmission Charges</b>	<b>Beneficiaries of Eastern Region</b>

**LILO connectivity to DVC Andal through 400 KV D/C Durgapur-Jamshedpur line  
under ERSS I**

---

<b>DOC</b>	<b>01/02/2011</b>
<b>Name of Project</b>	<b>ERSS I</b>
<b>Approved Cost</b>	<b>Rs. 2453 lakhs</b>
<b>Standing Committee – ER Reference</b>	<b>20/09/2010</b>
<b>EREB / ERPC Meeting Reference</b>	<b>15<sup>th</sup> ERPC 28/09/2010</b>
<b>Sharing of Transmission Charges</b>	<b>Upto COD of 1<sup>st</sup> unit by DVC</b>

**400 KV D/C Ranchi-Rourkela Line**

<b>DOC</b>	<b>01/12/2010</b>
<b>Name of Project</b>	<b>East West Corridor Strengthening</b>
<b>Approved Cost</b>	<b>Rs.17097 lakhs</b>
<b>Standing Committee – ER Reference</b>	<b>24/12/2004 at Puri (ER) / 20/01/2004 (WR)</b>
<b>EREB / ERPC Meeting Reference</b>	<b>116<sup>th</sup> EREB / 124<sup>th</sup> WREB</b>
<b>Sharing of Transmission Charges</b>	<b>To be shared by WR Beneficiaries</b>

**Annexure - I**

**SUMMARY OF UI RECEIPT AND PAYMENT STATUS**

**BILL UPTO 30.01.2011 (Week - 44 of 2010 - 11 )**

**Last Payment Disbursement Date - 10.02.11**

Figures in Rs. Lakhs

CONSTITUENTS	Receivable	Received	Payable	Paid	Outstanding
WR	2427.61745	2427.83708	84470.88097	76031.81552	-8439.28508
SR	8580.62559	7920.41079	5032.73215	5032.73215	660.21480
NER	2711.50586	1322.69252	14239.64780	14235.60687	1384.77241
NR	108504.78791	101140.17275	374.02604	380.24493	7370.83405
BSEB	5450.36139	5420.80937	8843.34094	8752.76517	-61.02375
JSEB	2024.70227	1314.61105	19006.56083	18828.20985	531.74024
DVC	34188.52165	32159.34990	482.11664	482.11664	2029.17175
GRIDCO	7504.70352	8697.94933	26759.88710	27422.59781	-530.53510
WBSETCL	9218.76641	9649.84285	11147.83958	11517.33050	-61.58552
SIKKIM	676.52006	320.52529	1955.59311	1955.09436	355.49602
NTPC	168.82963	168.82963	3205.14579	3076.21393	-128.93186
NHPC	0.00000	0.00000	1344.55031	1325.01938	-19.53093
MPL	13.61479	0.00000	0.00000	0.00000	13.61479
Pool Balance	0.00000	0.00000	1051.14374	1029.83925	-21.30449
Additional UI charge	2320.58622	1325.51213	585.78482	0.00000	995.07409
Transfer to IRE	0.00000	0.00000	523.23734	581.52578	58.28844
<b>TOTAL</b>	<b>181470.55653</b>	<b>170543.03056</b>	<b>179022.48716</b>	<b>170651.11214</b>	

**% Realization**

**93.98**

**As on 10.02.11**

Receivable:

Receivable by ER POOL

Payable

Payable by ER POOL

Received

Received by ER POOL

Paid

Paid by ER POOL

"- ve" Payable by ER pool

"+ ve" Receivable by ER pool

## Annexure - II

## STATEMENT OF IRE BETWEEN SR AND ER FOR 2009-10

Figures in Rs. Lac

WEEK NUMBER	DATE		Payable(-)/Recvl(+) by ER Pool as per ERPC-UI Account	Payable(-)/Recvl(+) by ER Pool as per SRPC UI A/C	IRE AMOUNT TO BE KEPT IN ER IRE A/C	IRE AMOUNT TO BE KEPT IN SR IRE A/C
	FROM	TO				
WEEK- 01	29-03-10	04-04-10	200.85528	507.58538	0.00000	306.73010
WEEK- 02	05-04-10	11-04-10	-95.32474	-61.61926	33.70548	0.00000
WEEK- 03	12-04-10	18-04-10	-645.16482	-497.86799	147.29683	0.00000
WEEK- 04	19-04-10	25-04-10	-520.66107	-381.07580	139.58527	0.00000
WEEK- 05	26-04-10	02-05-10	-700.70398	-439.76578	260.93820	0.00000
<b>TOTAL</b>			<b>-1760.99933</b>	<b>-872.74345</b>	<b>581.52578</b>	<b>306.73010</b>

IRE AMOUNT PAYABLE TO SR BY ER FOR WEEK 01 TO 05 290.76289

IRE AMOUNT PAYABLE TO ER BY SR FOR WEEK 01 TO 05 153.36505

**NET AMOUNT PAYABLE TO SR BY ER FOR WEEK 01 TO 05  
of 2010-11 137.39784**IRE AMOUNT REQUIRED FOR DISTRIBUTION AMONGST ER  
CONSTITUENTS FOR WEEK 01 TO 05 444.12794

DETAILS OF % SHARE OF CENTRAL SECTOR FOR THE PERIOD FROM 29.03.2010 TO 02.05.2010

Annexure-III

BENEFICIARIES		No. of Days	FSTPP	KHSTPP-I	KHSTPP-II	TSTPP	THEP	TEESTA	CHUKHA	RANGIT	KURICHU	Weighted Average Share for the Period	Share Apportioned to 100%
			1600	840	1000	1000	1020	510	270	60	60		
			% SHARE IN ER	% SHARE IN ER	% SHARE IN ER	% SHARE IN ER	% SHARE IN ER	% SHARE IN ER	% SHARE IN ER	% SHARE IN ER	% SHARE IN ER		
BSEB	29.03.2009 to 02.05.2010	35	0.2607	0.3797	0.0667	0.3726	0.2550	0.2126	0.2963	0.3500	0.0000	0.258631	0.362454
	Total no of days for the period	35											
JSEB	29.03.2009 to 02.05.2010	35	0.0983	0.0462	0.0167	0.0915	0.1146	0.1234	0.1074	0.1333	0.0000	0.081936	0.114827
	Total no of days for the period	35											
DVC	29.03.2009 to 02.05.2010	35	0.0000	0.0000	0.0000	0.0031	0.0554	0.0864	0.1037	0.1000	0.5000	0.026363	0.036946
	Total no of days for the period	35											
GRIDCO	29.03.2009 to 02.05.2010	35	0.1363	0.1524	0.0060	0.3180	0.0425	0.2059	0.1519	0.0000	0.0000	0.135136	0.189385
	Total no of days for the period	35											
SIKKIM	29.03.2009 to 02.05.2010	35	0.0163	0.0155	0.0033	0.0240	0.0000	0.1319	0.0222	0.1333	0.0000	0.023217	0.032537
	Total no of days for the period	35											
WBSEB	29.03.2009 to 02.05.2010	35	0.2881	0.0000	0.0000	0.0910	0.3825	0.2398	0.3185	0.2834	0.5000	0.188272	0.263850
	Total no of days for the period	35											
<b>Total</b>		<b>35</b>										<b>0.713555</b>	<b>1.000000</b>
<b>TOTAL IRE AMOUNT TO BE DISTRIBUTED AMONGST ER CONSTITUENTS = Rs</b>			<b>44412794</b>										
BENEFICIARIES	Weighted Average Share from 29.03.10 to 02.05.10 ,	APPORTIONED AMOUNT		AMOUNT DEDUCTED		NET AMOUNT TO BE PAID							
BSEB	0.362454	16097614		284950		15812664							
JSEB	0.114827	5099795		0		5099795							
DVC	0.036946	1640897		83878		1557019							
GRIDCO	0.189385	8411104		0		8411104							
SIKKIM	0.032537	1445071		0		1445071							
WBSETCL	0.263850	11718313		0		11718313							
<b>TOTAL</b>	<b>1.000000</b>	<b>44412794</b>		<b>368828</b>		<b>44043966</b>							

NOTE: 1. UI Principal outstanding of DVC for 2008 - 09 is Rs 83878.00. This amount is adjusted from Transmission benefit generated between ER & SR for 2010-11. Hence balance amount of Rs 1557019.00 is paid to DVC.  
 2. BSEB outstanding amount of reactive payment of Rs 284950.00 for 2006-07 has been adjusted from Transmission benefit generated between ER & SR for 2010-11. Hence balance amount of Rs 15812664.00 is paid to BSEB.

**STATUS OF REACTIVE CHARGES IN ER REACTIVE POOL AS PER PUBLISHED A/C UPTO 30.01.11  
AS ON 10.02.11**

Figures in Rs

CONSTITUENTS	2003-04		2004-05		2005-06		2006-07		2007-08		2008-09		2009-10		2010-11		TOTAL	
	RECEIVABLE	RECEIVED	RECEIVABLE	RECEIVED	RECEIVABLE	RECEIVED	RECEIVABLE	RECEIVED	RECEIVABLE	RECEIVED	RECEIVABLE	RECEIVED	RECEIVABLE	RECEIVED	RECEIVABLE	RECEIVED	RECEIVABLE	RECEIVED
BSEB	0	0	0	0	0	0	284950	0	0	0	0	0	0	0	284950	0	284950	284950
DVC	6593	6593	86391	86391	264138	264138	0	0	0	0	0	0	0	0	0	0	357122	357122
GRIDCO	0	0	0	0	0	0	0	0	0	0	223311	223311	0	0	0	0	223311	223311
WBSEB	1778848	1778848	451090	451090	350045	350045	3519490	3519490	881058	881058	3716019	3716019	3431470	3431470	1273089	1273089	15401109	15401109
UPPCL	0	0	0	0	0	0	28575	8465	0	0	0	0	0	0	0	0	28575	8465
<b>TOTAL</b>	<b>1785441</b>	<b>1785441</b>	<b>537481</b>	<b>537481</b>	<b>614183</b>	<b>614183</b>	<b>3833015</b>	<b>3527955</b>	<b>881058</b>	<b>881058</b>	<b>3939330</b>	<b>3939330</b>	<b>3431470</b>	<b>3431470</b>	<b>1273089</b>	<b>1558039</b>	<b>16295067</b>	<b>16274957</b>

Total Received	16274957
Expenditure incurred for organising workshop on Black Start Procedure (4 SLDCs)	160000
Expenditure incurred for organising a seminar on Power Exchange	290000
Expenditure incurred for organising seminar on "Reduction of Agreed technical & commercial Loss-Issues and Challenges " at Bhubaneswar	184991
Expenditure incurred for organising workshop on Black Start Procedure at ERPC on 19.11.09	123028
Expenditure incurred for organising a seminar on Black Start on 18.04.09 at Hotel Big Boss	49050
Amount Retained in Reactive A/C	15467888
Waival of UPPCL amount on 14 th commercial sub committee meeting on 10.09.10	20110
<b>Amount Credited to reactive account due to TDS (2003-04 to 2007-08) on 25.11.10</b>	<b>402629</b>
<b>Net Retained in Reactive A/C</b>	<b>15850407</b>

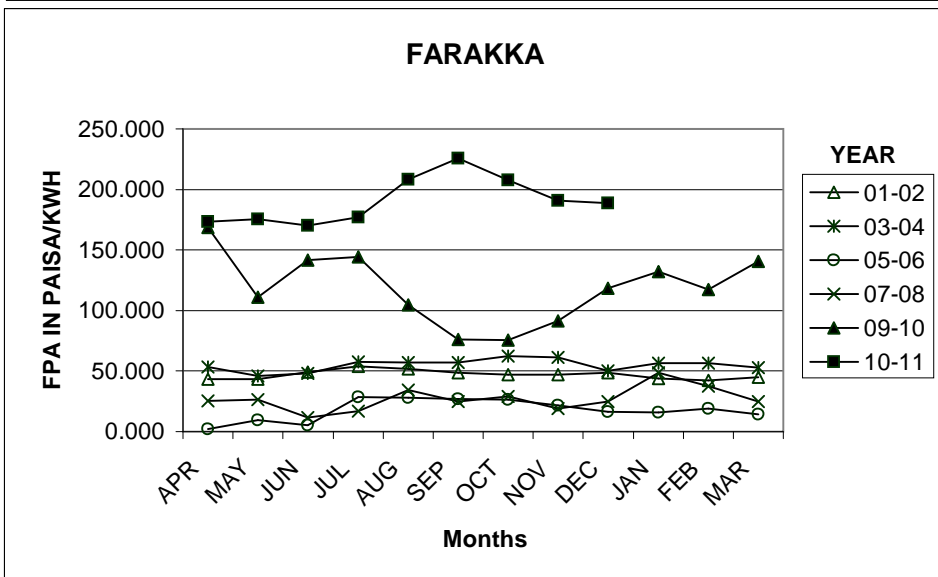
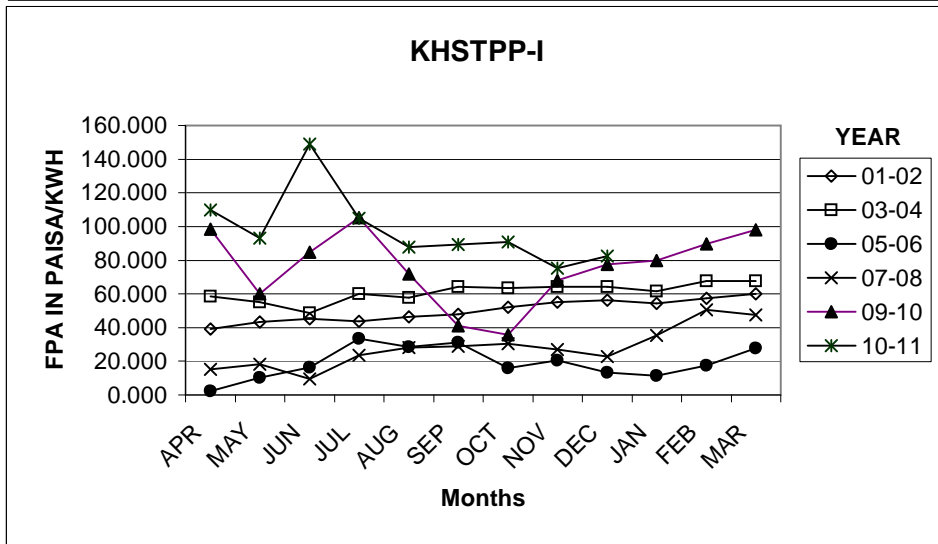
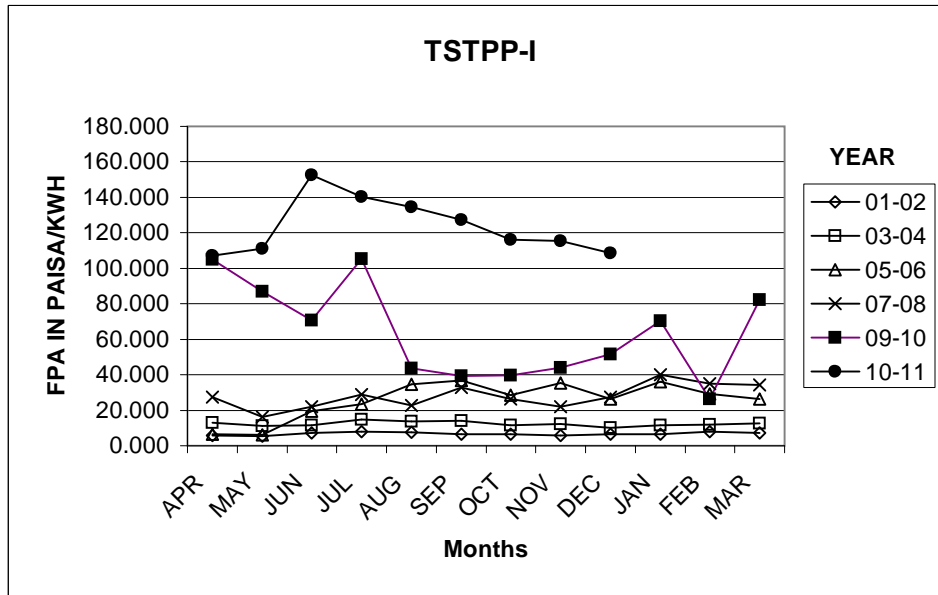
**ANNEXURE - V**

**All fig in Rs Lakhs**

**Total Amount Accumulated as per accounts (As on 10.02.11)  
After payment to PSDF**

Year	Capping		Surcharge	
	As per accounts	As per actual	As per accounts	As per actual
2010 - 11	71.50798	54.42819	104.08136	67.87386
<b>Total</b>	<b>71.50798</b>	<b>54.42819</b>	<b>104.08136</b>	<b>67.87386</b>

**NOTE: An amount of Rs 62.68237 Lacs paid by GRIDCO as delayed payment surcharge of UI for 2009-10 is kept as Addl UI**



Note- Data available upto Dec-10

## ANNEXURE-VI (2/2)

All Figures in paisa/kwh

FUEL PRICE ADJUSTMENT :: 2001-2011  
TSTPS - I

YEAR → MONTHS ↓	01-02	02-03	03-04	04-05	05-06	06-07	07-08	08-09	09-10	10-11
APR	5.810	6.120	12.830	0.000	6.410	18.57	27.41	31.920	104.900	107.02
MAY	5.400	6.070	11.030	-1.930	6.140	32.07	16.37	35.390	87.080	111.24
JUN	7.310	7.650	11.640	-0.030	19.390	14.3	21.98	34.610	70.740	152.55
JUL	8.030	8.120	14.640	4.570	23.470	14.3	28.79	29.630	105.380	140.19
AUG	7.460	9.890	13.720	12.600	34.570	17.47	22.61	34.580	43.780	134.62
SEP	6.640	9.890	14.010	8.830	36.880	22.79	32.91	35.280	39.380	127.17
OCT	6.570	9.030	11.550	8.830	28.380	20.23	26.23	53.390	39.590	116.02
NOV	5.730	10.190	12.150	9.850	35.390	16.31	22.18	47.220	44.020	115.40
DEC	6.640	10.780	10.100	9.290	26.420	25.11	27.54	91.620	51.480	108.45
JAN	6.630	10.600	11.700	7.210	35.990	23.5	40.21	83.380	70.410	NA
FEB	7.890	11.630	11.930	7.030	29.360	32.19	34.93	69.970	26.250	NA
MAR	7.060	11.630	12.530	7.360	26.450	21.52	34.37	86.780	82.130	NA

FUEL PRICE ADJUSTMENT :: 2001-2011  
KSTPP - I

YEAR → MONTHS ↓	01-02	02-03	03-04	04-05	05-06	06-07	07-08	08-09	09-10	10-11
APR	39.210	43.530	58.600	0.000	2.210	25.210	15.36	16.280	98.480	109.78
MAY	43.270	50.970	55.100	6.790	10.100	35.800	18.16	13.650	59.930	93.30
JUN	45.250	51.020	48.520	11.760	16.210	22.900	9.48	35.530	84.590	149.13
JUL	43.530	53.770	60.060	20.000	33.600	17.910	23.54	22.870	105.220	105.04
AUG	46.180	60.720	57.910	11.560	28.530	15.070	28.26	12.330	71.820	87.73
SEP	47.820	60.720	64.360	-12.020	31.320	25.910	28.96	-0.940	40.900	89.37
OCT	52.230	61.420	63.510	7.880	16.030	40.100	30.54	0.530	35.680	90.99
NOV	55.020	52.930	64.090	10.630	20.340	15.150	27.01	3.610	68.040	75.36
DEC	56.160	55.700	64.050	6.210	13.200	21.580	22.92	101.050	77.420	82.41
JAN	54.300	58.150	61.480	17.380	11.560	6.390	35.34	78.220	79.940	NA
FEB	57.250	60.630	67.740	24.050	17.450	27.140	50.36	72.570	89.520	NA
MAR	60.170	60.630	67.570	29.250	27.670	22.960	47.52	107.910	98.130	NA

FUEL PRICE ADJUSTMENT :: 2001-2011  
FSTPP

YEAR → MONTHS ↓	01-02	02-03	03-04	04-05	05-06	06-07	07-08	08-09	09-10	10-11
APR	43.330	39.790	53.360	0.000	2.030	27.600	25.35	33.900	168.760	173.14
MAY	43.130	40.800	45.850	4.470	9.670	8.280	26.19	28.530	111.000	175.60
JUN	48.900	44.630	47.860	4.590	5.260	17.420	11.86	19.980	141.490	170.31
JUL	53.930	48.170	57.360	1.840	28.530	8.380	16.69	43.990	144.300	177.04
AUG	51.860	51.810	56.880	4.520	27.900	9.520	34.28	23.630	104.540	208.37
SEP	48.550	51.810	57.110	4.010	26.760	40.180	24.98	19.960	75.950	225.86
OCT	47.110	55.510	62.180	4.010	26.320	32.910	28.81	41.340	75.800	207.65
NOV	47.220	49.230	61.360	-14.580	21.840	16.820	18.93	45.380	91.240	190.58
DEC	48.590	53.700	50.260	10.900	16.380	13.440	24.86	105.170	118.350	188.80
JAN	44.050	57.850	56.640	16.360	15.630	18.990	48.51	93.390	131.960	NA
FEB	42.450	69.750	56.590	14.170	19.270	23.810	37.47	110.730	117.460	NA
MAR	44.890	69.750	52.750	17.040	14.150	19.770	25.03	158.690	140.680	NA

NA- Not Available

All figures in %

ANNEXURE-VII (1/2)

Beneficiary	FSTPP								KAHALGAON -I							
	FIRM		UNALLOCATED		DVC SURR		TOTAL		FIRM		UNALLOCATED		DVC SURR		TOTAL	
	PEAK	OFFPEAK	PEAK	OFFPEAK	PEAK	OFFPEAK	PEAK	OFFPEAK	PEAK	OFFPEAK	PEAK	OFFPEAK	PEAK	OFFPEAK	PEAK	OFFPEAK
BSEB	22.06	22.06	3.4025	4.129	0	0	25.4625	26.189	33.98	33.98	3.3975	4.1025	0	0	37.3775	38.0825
JHARKHAND	6.38	6.38	4.95	4.2	0	0	11.33	10.58	1.2	1.2	4.9	4.15	0	0	6.1	5.35
DVC	0	0	0	0	0	0	0	0	0	0	0	0	0	0	0	0
ORISSA	13.63	13.63	0	0	0	0	13.63	13.63	15.24	15.24	0	0	0	0	15.24	15.24
WBSEB	30.54	30.54	0	0	0	0	30.54	30.54	0	0	0	0	0	0	0	0
SIKKIM	1.63	1.63	0	0	0	0	1.63	1.63	1.55	1.55	0	0	0	0	1.55	1.55
HVDC	0	0	0	0	0	0	0	0	0	0	0.15	0.15	0	0	0.15	0.15
<b>ST</b>	<b>74.24</b>	<b>74.24</b>	<b>8.3525</b>	<b>8.329</b>	<b>0</b>	<b>0</b>	<b>82.5925</b>	<b>82.569</b>	<b>51.97</b>	<b>51.97</b>	<b>8.4475</b>	<b>8.4025</b>	<b>0</b>	<b>0</b>	<b>60.4175</b>	<b>60.3725</b>
							0	0							0	0
TAMILNADU	0	0	3.94	3.94	0	0	3.94	3.94	0	0	3.89	3.89	0	0	3.89	3.89
PUDUCHERRY	0	0	0	0	0	0	0	0	0	0	0	0	0	0	0	0
ANDHRA	0	0	0	0	0	0	0	0	0	0	0	0	0	0	0	0
ST	0	0	3.94	3.94	0	0	3.94	3.94	0	0	3.89	3.89	0	0	3.89	3.89
							0	0							0	0
CHATTISGARH	0	0	0	0	0	0	0	0	0	0	0	0	0	0	0	0
GUJRAT	0	0	0	0	0	0	0	0	0	0	0	0	0	0	0	0
MADHYA PRADESH	0	0	0	0	0	0	0	0	0	0	0	0	0	0	0	0
MAHARASHTRA	0	0	0	0	0	0	0	0	0	0	0	0	0	0	0	0
DADRA & NAGAR	0	0	0	0	0	0	0	0	0	0	0	0	0	0	0	0
DAMAN & DIU	0	0	0	0	0	0	0	0	0	0	0	0	0	0	0	0
GOA	0	0	0	0	0	0	0	0	0	0	0	0	0	0	0	0
<b>ST</b>	<b>0</b>	<b>0</b>	<b>0</b>	<b>0</b>	<b>0</b>	<b>0</b>	<b>0</b>	<b>0</b>	<b>0</b>	<b>0</b>	<b>0</b>	<b>0</b>	<b>0</b>	<b>0</b>	<b>0</b>	<b>0</b>
							0	0							0	0
UPPCL	2.08	2.08	0	0	0	0	2.08	2.08	9.12	9.12	0	0	0	0	9.12	9.12
UPPCL(TALA)							0	0							0	0
HARYANA	0.69	0.69	0	0	0	0	0.69	0.69	3.04	3.04	0	0	0	0	3.04	3.04
HARYANA(TALA)							0	0							0	0
RAJASTHAN	0.69	0.69	0	0	0	0	0.69	0.69	3.04	3.04	0	0	0	0	3.04	3.04
RAJASTHAN(TALA)							0	0							0	0
J&K	0.85	0.85	0	0	0	0	0.85	0.85	3.68	3.68	0	0	0	0	3.68	3.68
J&K(TALA)							0	0							0	0
HP	0	0	0	0	0	0	0	0	0	0	0	0	0	0	0	0
DELHI	1.39	1.39	0	0	0	0	1.39	1.39	6.07	6.07	0	0	0	0	6.07	6.07
DELHI(TALA)							0	0							0	0
PUNJAB	1.39	1.39	0	0	0	0	1.39	1.39	6.07	6.07	0	0	0	0	6.07	6.07
PUNJAB(TALA)							0	0							0	0
UTTARAKHAND	0	0	0	0	0	0	0	0	0	0	0	0	0	0	0	0
CHANDIGARH	0	0	0	0	0	0	0	0	0	0	0	0	0	0	0	0
<b>ST</b>	<b>7.09</b>	<b>7.09</b>	<b>0</b>	<b>0</b>	<b>0</b>	<b>0</b>	<b>7.09</b>	<b>7.09</b>	<b>31.02</b>	<b>31.02</b>	<b>0</b>	<b>0</b>	<b>0</b>	<b>0</b>	<b>31.02</b>	<b>31.02</b>
							0	0							0	0
ASSAM	0	0	0.9575	0.778	3.67	3.67	4.6275	4.448	0	0	0.9325	0.7745	2.01	2.01	2.9425	2.7845
MEGHALAYA	0	0	0.73	0.6325	0	0	0.73	0.6325	0	0	0.72	0.629	0	0	0.72	0.629
NAGALAND	0	0	0.29	0.779	0	0	0.29	0.779	0	0	0.29	0.7725	0	0	0.29	0.7725
ARUNACHAL	0	0	0.44	0.3425	0	0	0.44	0.3425	0	0	0.43	0.339	0	0	0.43	0.339
MIZORAM	0	0	0.29	0.199	0	0	0.29	0.199	0	0	0.29	0.1925	0	0	0.29	0.1925
<b>ST</b>	<b>0</b>	<b>0</b>	<b>2.7075</b>	<b>2.731</b>	<b>3.67</b>	<b>3.67</b>	<b>6.3775</b>	<b>6.401</b>	<b>0</b>	<b>0</b>	<b>2.6625</b>	<b>2.7075</b>	<b>2.01</b>	<b>2.01</b>	<b>4.6725</b>	<b>4.7175</b>
							0	0							0	0
<b>GT</b>	<b>81.33</b>	<b>81.33</b>	<b>15</b>	<b>15</b>	<b>3.67</b>	<b>3.67</b>	<b>100</b>	<b>100</b>	<b>82.99</b>	<b>82.99</b>	<b>15</b>	<b>15</b>	<b>2.01</b>	<b>2.01</b>	<b>100</b>	<b>100</b>

Latest Share w.e.f 00:00 Hrs of 10.02.2011

All figures in %

ANNEXURE-VII (2/2)

Beneficiary	TALCHER							KAHALGAON -II						
	FIRM		UNALLOCATED		DVC SURR		TOTAL		FIRM		UNALLOCATED		TOTAL	
	PEAK	OFFPEAK	PEAK	OFFPEAK	PEAK	OFFPEAK	PEAK	OFFPEAK	PEAK	OFFPEAK	PEAK	OFFPEAK	PEAK	OFFPEAK
BSEB	33.25	33.25	3.4025	4.129	0	0	36.6525	37.379	0	0	6.67	6.67	6.67	6.67
JHARKHAND	5.7	5.7	4.95	4.2	0	0	10.65	9.9	0	0	1.67	1.67	1.67	1.67
DVC	0.31	0.31	0	0	0	0	0.31	0.31	0	0	0	0	0	0
ORISSA	31.8	31.8	0	0	0	0	31.8	31.8	2.05	2.05	0	0	2.05	2.05
WBSEB	9.1	9.1	0	0	0	0	9.1	9.1	0	0	0	0	0	0
SIKKIM	2.4	2.4	0	0	0	0	2.4	2.4	0.33	0.33	0	0	0.33	0.33
HVDC	0	0	0	0	0	0	0	0	0	0	0	0	0	0
<b>ST</b>	<b>82.56</b>	<b>82.56</b>	<b>8.3525</b>	<b>8.329</b>	<b>0</b>	<b>0</b>	<b>90.9125</b>	<b>90.889</b>	<b>2.38</b>	<b>2.38</b>	<b>8.34</b>	<b>8.34</b>	<b>10.72</b>	<b>10.72</b>
TAMILNADU	0	0	3.94	3.94	0	0	3.94	3.94	0	0	0	0	0	0
PUDUCHERRY	0	0	0	0	0	0	0	0	0	0	0	0	0	0
ANDHRA	0	0	0	0	0	0	0	0	0	0	0	0	0	0
ST	0	0	3.94	3.94	0	0	3.94	3.94	0	0	0	0	0	0
CHATTISGARH	0	0	0	0	0	0	0	0	2	2	0	0	2	2
GUJRAT	0	0	0	0	0	0	0	0	9.4	9.4	0	0	9.4	9.4
MADHYA PRADESH	0	0	0	0	0	0	0	0	4.93	4.93	0	0	4.93	4.93
MAHARASHTRA	0	0	0	0	0	0	0	0	9.87	9.87	0	0	9.87	9.87
DADRA & NAGAR	0	0	0	0	0	0	0	0	0.2	0.2	0	0	0.2	0.2
DAMAN & DIU	0	0	0	0	0	0	0	0	0.13	0.13	0	0	0.13	0.13
GOA	0	0	0	0	0	0	0	0	0	0	0	0	0	0
<b>ST</b>	<b>0</b>	<b>0</b>	<b>0</b>	<b>0</b>	<b>0</b>	<b>0</b>	<b>0</b>	<b>0</b>	<b>26.53</b>	<b>26.53</b>	<b>0</b>	<b>0</b>	<b>26.53</b>	<b>26.53</b>
UPPCL	0	0	0	0	0	0	0	0	16.73	16.73	0	0	16.73	16.73
UPPCL(TALA)							0	0					0	0
HARYANA	0	0	0	0	0	0	0	0	4.58	4.58	0	0	4.58	4.58
HARYANA(TALA)							0	0					0	0
RAJASTHAN	0	0	0	0	0	0	0	0	7.11	7.11	0	0	7.11	7.11
RAJASTHAN(TALA)							0	0					0	0
J&K	0	0	0	0	0	0	0	0	5.56	5.56	0	0	5.56	5.56
J&K(TALA)							0	0					0	0
HP	0	0	0	0	0	0	0	0	1.53	1.53	0	0	1.53	1.53
DELHI	0	0	0	0	0	0	0	0	10.49	10.49	0	0	10.49	10.49
DELHI(TALA)							0	0					0	0
PUNJAB	0	0	0	0	0	0	0	0	8.02	8.02	0	0	8.02	8.02
PUNJAB(TALA)							0	0					0	0
UTTARAKHAND	0	0	0	0	0	0	0	0	1.87	1.87	0	0	1.87	1.87
CHANDIGARH	0	0	0	0	0	0	0	0	0.2	0.2	0	0	0.2	0.2
<b>ST</b>	<b>0</b>	<b>0</b>	<b>0</b>	<b>0</b>	<b>0</b>	<b>0</b>	<b>0</b>	<b>0</b>	<b>56.09</b>	<b>56.09</b>	<b>0</b>	<b>0</b>	<b>56.09</b>	<b>56.09</b>
ASSAM	0	0	0.9575	0.778	2.44	2.44	3.3975	3.218	0	0	5.06	5.06	5.06	5.06
MEGHALAYA	0	0	0.73	0.6325	0	0	0.73	0.6325	0	0	1.6	1.6	1.6	1.6
NAGALAND	0	0	0.29	0.779	0	0	0.29	0.779	0	0	0	0	0	0
ARUNACHAL	0	0	0.44	0.3425	0	0	0.44	0.3425	0	0	0	0	0	0
MIZORAM	0	0	0.29	0.199	0	0	0.29	0.199	0	0	0	0	0	0
<b>ST</b>	<b>0</b>	<b>0</b>	<b>2.7075</b>	<b>2.731</b>	<b>2.44</b>	<b>2.44</b>	<b>5.1475</b>	<b>5.171</b>	<b>0</b>	<b>0</b>	<b>6.66</b>	<b>6.66</b>	<b>6.66</b>	<b>6.66</b>
GT	<b>82.56</b>	<b>82.56</b>	<b>15</b>	<b>15</b>	<b>2.44</b>	<b>2.44</b>	<b>100</b>	<b>100</b>	<b>85</b>	<b>85</b>	<b>15</b>	<b>15</b>	<b>100</b>	<b>100</b>

Latest Share w.e.f 00:00 Hrs of 10.02.2011

**Annexure - VIII**

**REPORT OF OPENING OF LC IN EASTERN REGION (AS ON 31.01.11)**

<b>Sl. No</b>	<b>Name of ER Pool members</b>	<b>Letter issued by ERLDC to Open LC</b>	<b>LC Amount (Lakhs of Rupees)</b>	<b>Status</b>	<b>Response from Pool Members</b>	<b>Remarks</b>
1	<b>BSEB</b>	Yes	361.54	LC not opened	Nil	No intimation is received
2	<b>JSEB</b>	Yes	142.74	LC not opened	Nil	No intimation is received
3	<b>DVC</b>	Yes	0.00	LC not required		
4	<b>GRIDCO</b>	Yes	696.71	LC opened	LC Opened	
5	<b>WBSETCL</b>	Yes	49.38	LC not opened	LC Opened	
6	<b>SIKKIM</b>	Yes	14.47	LC not opened	LC Opened	
7	<b>NTPC</b>	Yes	0.00	LC not required		
8	<b>NHPC</b>	Yes	0.00	LC not required		

ANNEXURE-IX

