

EASTERN REGIONAL POWER COMMITTEE

AGENDA FOR THE 10TH TCC MEETING

Date: 28.08.2009

Venue : The Ffort Raichak Hotel

ITEM NO.1 CONFIRMATION OF THE MINUTES OF 9th TCC MEETING OF ERPC HELD ON 10.04.2009 AT PORT BLAIR

The minutes of 9th TCC meeting of ERPC were circulated vide letter no. ERPC/Committee/2008/2648-95 dated 08.05.2009. No comments have been received on the minutes of the meeting.

Members may please confirm the minutes of 9th TCC meeting.

ITEM NO.2 HIGHLIGHTS OF GRID PERFORMANCE FOR THE PERIOD APRIL'09 TO JULY'09

2.1 FREQUENCY :

Frequency profile for the period April'09 to July'09 and the corresponding period of the previous year (i.e. April'08 to July'08) are shown below:

	2008-09	2009-10	2008-09	2009-10	2008-09	2009-10
	< 49.0 Hz	<49.2 Hz	49.0 to 50.5 Hz	49.2 to 50.3 Hz	>50.5Hz	> 50.3 Hz
	IEGC Band					
April	29.77	18.93	70.22	81.07	0.01	0
May	3.23	6.58	96.07	93.42	0.70	0
June	4.9	19.33	95.03	80.67	0.07	0
July	9.26	4.74	90.75	95.26	0	0

From the above table it may be observed that :

- Frequency profile within and below the IEGC band has recorded wide variation April'09 and June'09 compared to April'08 and June'08 respectively. During June'09 the frequency profile deteriorated compared to the profile in June'08.

2.2 PERFORMANCE REVIEW

Description	Average (MU)/Month			April'08 to July'08	April'09 to July'09	% Increase
	April'07 to March'08	April'08 to March'09	% Increase			
Net Generation (MU)/Month	7094	7584	6.9	7394	7692	4.0
Net Central Sector Thermal Generation (MU)/Month	2037	2147	5.4	2077	2296	10.5

Description	Average (MU)/Month			April'08 to July'08	April'09 to July'09	% Increase
	April'07 to March'08	April'08 to March'09	% Increase			
Import from CPPs in (MU/Month)	127	190	49	156	272	73.7
ER Consumption (MU/Month)	6038	6505	7.7	6482	7022	8.3
Net Export to Outside Region (MU/Month) including transmission loss	1184	1269	7.2	1068	943	(-)11.8
Regional Peak Demand Met (MW)	10721	11789	10	10750	11983	11.5
Peak Export (MW)	3741	3630	-3	3148	3507	11.4

Generation : During the period under review, the overall generation in Eastern Region increased by about 4% compared to the same period of the last year. Although many new Units were commissioned during the last year, the overall increase in generation was marginal mainly because of less generation from newly commissioned units due to their frequent tripping, shortage of coal and less hydro generation due to inadequate rainfall.

Demand : During the period under review the regional peak met was 11983 MW, an increase of 11.5% compared to corresponding period of last year. The monthly average regional energy consumption was 7022 MU, an increase of 8.3% compared to the same period of the last year.

2.3 MONTHLY AND CUMULATIVE EXPORT OF POWER FROM ER (BASED ON SEM FIGURES)

Table : 1

(A) EXPORT

Region To	Export in MU		Export in MU		% Growth in Export *	
	During July'09	Cumulative (April'09 to July'09)	During July'08	Cumulative (April'08 to July'08)	During July'09	Cumulative (April'09 to July'09)
NR	1565.54	4101.45	1122.32	2942	39.5	39.41
WR	0	0	89.57	516.31	NA	NA
SR	0	721.52	177.94	997.41	NA	-27.66
NER	0	228.19	0	61.41	0.00	271.58
TOTAL	1565.54	5051.16	1389.83	4517.13	12.64	11.82

B) IMPORT

Region From	Import in MU		Import in MU		% Growth *	
	During July'09	Cumulative (April'09 to July'09)	During July'08	Cumulative (April'08 to July'08)	During July'09	Cumulative (April'09 to July'09)
NR	0	0	0	0	NA	NA
WR	496.33	832.03	0	0	NA	NA
SR	331.88	507.48	0	0	NA	NA

NER	31.68	31.68	291.41	432.37	-89.12	-92.67
TOTAL	859.89	1371.19	291.41	432.37	195.07	217.13
Net Export from ER	705.65	3679.97	1098.42	4084.76	-35.76	-9.9

* As compared to similar period of last year.

NA – Not Applicable.

ACTUAL EXPORT OF POWER FROM ER VIS-À-VIS SCHEDULE

Table : 2

All Figures in MU

Month	NR		WR		SR		NER	
	Schedule	Actual	Schedule	Actual	Schedule	Actual	Schedule	Actual
April'09	-235.19	-415.32	-159.75	239.34	-583.59	-235.19	-134.91	-108.73
May'09	-718.62	-913.20	-68.88	7.06	-210.32	-191.54	-109.42	-82.67
June'09	-852.92	-1207.39	-245.97	89.30	152.14	175.60	-81.87	-36.79
July'09	-1198.68	-1564.54	-14.07	496.33	365.12	331.88	22.11	31.68
Total	-2996.41	-4101.45	-488.67	832.03	-276.65	-214.04	-304.09	-196.51

(-) = Export from ER

(+) = Import to ER

During the period under review i.e. April'09 to July'09, the net export outside Eastern Region was 3698 MU compared to 4085 MU during April'08 to July'08, showing a decline of 10%. During the period April'09 to July'09, NR drew 4105 MU against its schedule of 2996 MU, an overdrawal of 37%. Whereas, WR injected 832 MU to ER against its drawal schedule of 489 MU.

ITEM NO.3 IMPORTANT GRID EVENTS DURING APRIL'09 TO JULY'09

- The perennial problem of tripping of HVDC Talcher-Kolar Poles on DC line fault was rectified on 05.04.09 by removing forest infringement at few locations along the HVDC line.
- On 19.04.09, CESC system suffered a collapse excluding radial loads at Titagarh, Kasba, Liluah.
- As per GOI order dated 01.07.09 scheduling of additional 30 MW central sector power to BSEB commenced w.e.f. 00:00hrs of 03.07.09 for assistance to Nepal through 132 kV Balmikinagar-Surajpura.
- Santaldih TPS Unit No.5 (250 MW) of WBPDC declared under commercial operation on 01.04.09.
- Bakreswar TPS Unit No.5 (210 MW) of WBPDC declared under commercial on 30.03.09.

Members may please note.

ITEM NO.4 RESERVOIR LEVEL OF IMPORTANT HYDRO STATIONS IN ER

The reservoir level of important hydro stations at last day of month for months April'09 to July'09 vis-à-vis last year level is given below:

Project	IC (MW)	FRL (m)	MDDL (m)	Year	April	May	June	July
Balimela	510	462.08	438.91	2009	440.16	439.43	439.21	444.01
				2008	446.29	443.39	441.53	441.02
Hirakud	331.5	192.02	179.83	2009	183.34	182.88	181.38	184.95
				2008	185.02	183.32	181.46	185.24
Indravati	600	641.84	625	2009	626.98	625.62	625.20	635.50
				2008	628.31	626.63	627.00	626.80
Rengali	250	123.44	109.72	2009	112.02	110.10	109.72	115.18
				2008	111.50	110.30	114.40	118.40
Upper Kolab	320	857.78	843.78	2009	846.13	844.87	844.51	848.47
				2008	847.94	845.51	844.87	845.10

From the above table, it may be noted that reservoir levels in the region have started improving from the month of July'09.

Members may please note.

ITEM NO. 5 REVIEW OF COAL STOCK POSITION IN VARIOUS THERMAL GENERATING STATIONS IN EASTERN REGION

As on 02.08.09, out of 23 coal based thermal power stations in Eastern Region, 13 stations were critical with less than 7 days coal stock and 8 stations were super-critical with less than 4 days coal stock (Source: CEA website). Coal supply position to various power stations in ER as furnished to ERPC Secretariat is as below:

Sl. No.	Power Station	Capacity MW	Daily Coal Required '000 MT	Present Coal Stock '000 MT as 31.07.09	Linked Mines	Mode of transport
<u>NTPC</u>						
1	<i>Farakka STPS</i>	<i>1600</i>	<i>32.640</i>	<i>9*</i>	<i>Rajmahal (ECL)</i>	<i>Pithead</i>
2	<i>Kahalgaoon STPS</i>	<i>1840</i>	<i>37.536</i>	<i>55*</i>	<i>Rajmahal (ECL)</i>	<i>Pithead</i>
3	<i>Talcher STPS</i>	<i>3000</i>	<i>57.600</i>	<i>57*</i>	<i>Lingaraj (MCL)</i>	<i>Pithead</i>
<u>DVC</u>						
4	BTPS-B	630	10.500	140.000@	CCL: Jharia & Kargail BCCL: Jharia	Rail
5	Chandrapura	750	6.500	340.309@	CCL: Jharia BCCL: Jharia	Rail

Sl. No.	Power Station	Capacity MW	Daily Coal Required '000 MT	Present Coal Stock '000 MT as 31.07.09	Linked Mines	Mode of transport
6	Durgapur	350	5.460	67.443@	ECL: Raniganj-Non-Rj BCCL: Jharia	Rail
7	<i>Mejia</i>	<i>1340</i>	<i>22.500</i>	<i>NIL@</i>	<i>ECL: Raniganj-Non-Rj BCCL: Jharia , Adra</i>	<i>Rail</i>
<u>Bihar</u>						
8	Barauni	320	0.6	26*	ECL, BCCL, CCL	Rail
9	<i>Muzzafarpur</i>	<i>220</i>	<i>1.0</i>	<i>1*</i>	<i>ECL, BCCL, CCL</i>	<i>Rail</i>
<u>Jharkhand</u>						
10	<i>Patratu</i>	<i>840</i>	<i>4.0</i>	<i>4*</i>	<i>CCL</i>	<i>Rail</i>
11	<i>Tenughat</i>	<i>420</i>	<i>6.6</i>	<i>7*</i>	<i>CCL: Pareh, Tapin, Kalyani, Kedla</i>	<i>Road</i>
<u>Orissa</u>						
12	IB TPS	420	8.0	131.198	MCL: Lakhanpur	Pithead
13	Talcher Old	470	8.3	124*	MCL	Pithead
<u>West Bengal</u>						
<u>WBPDCCL</u>						
14	Kolaghat TPS	1260	17.85	86.202	BCCL, ECL, MCL	Rail
15	Bakreswar TPS	840	10.80	45	ECL	Rail
16	Santaldih TPS	730	6.235	134	BCCL, ECL	Rail
17	Bandel TPS	450	4.970	31	ECL	Rail
18	Sagardighi	600	7.200	29	ECL	Rail
<u>DPL</u>						
19	DPL TPS	690	9.6	77	BCCL, ECL, MCL	Rail
<u>CESC</u>						
20	Budge-Budge	500	7.200	81.563	BCCL, ECL	Rail
21	<i>Titagarh</i>	<i>240</i>	<i>3.400</i>	<i>8.218</i>	<i>ECL</i>	<i>Rail</i>
22	Southern	135	2.500	19.402	ECL	Rail
23	New Cossipore	130	1.600	10.116	ECL	Rail

@ As on 07.08.09, * As on 02.08.09

Supercritical stations with less than 4 days coal stock are shown in bold and italics.

Due to low coal stock position, performances of thermal generating stations are severely dented resulting into critical condition of the grid. ER ISGS thermal stations are presently declaring lower availability mainly due to coal shortage. A comparative statement showing typical values of DC furnished by NTPC vis-à-vis full DC based on capacity of running units as on the beginning of August'09 is shown below:

Name of thermal ISGS	Full DC based on running units (MW)	DC furnished (Typical) MW	Availability furnished as % of full DC	Remarks
Farakka STPP	1017	700	69	U#5 (500 MW) is out of bar due to AMC
Kahalgaon -I	765	540	71	All units are on bar
Kahalgaon -II	925	540	58	All units are on bar
Talcher-I	925	910	97	All units are on bar

Following coal based thermal generating stations in Eastern Region have reported loss of generation in the month of July'09 due to shortage of coal.

Sl. No	Station	IC (MW)	Loss of generation in MU
1	Farakka STPS	1600	151.26
2	Talcher Stage-I	1000	65.33
3	Kahalgaon STPS	1840	278.83
4	Kolaghat TPP	1260	112.412

In earlier meeting, representatives of various generating stations mentioned about various coal related problems like shortage of coal, poor quality of coal (full of water and mud) and unloading constraints.

The matter was discussed in 41st OCC meeting of ERPC held on 18.08.09. There was divergence of opinion on some issues between generating companies, coal companies and Railways. Generating companies highlighted about inadequate and improper quality of coal supply. Coal companies while assuring supply as per linkage insisted for Fuel Supply Agreement for effective supply. Railways agreed to provide requisite rakes but highlighted the delay in unloading of rakes in some power stations. Considering the seriousness of the issue it was decided to place the matter before TCC for further deliberation.

Members may please discuss.

ITEM NO. 6 CORRIDOR CONSTRAINTS FOR EXPORT OF SURPLUS POWER FROM ER TO NR – ISSUE RAISED BY WBSEDCL

WBSEDCL have submitted that during July'09 there was sustained high overdrawal by NR. The overdrawal had reached as high as 600 to 800 MW. However, WBSEDCL's application for export of 100 MW power to NR was rejected by NRLDC on the ground of corridor constraints. Since WBSEDCL was denied open access for the month of July'09, it appeared that no margin was available for export of power to NR which inter-alia meant that the reliability margin of the transmission system would be at stake if it was allowed.

WBSEDCL have submitted that under the above circumstances the following issues need to be clarified / answered :

- i) Why NRLDC has been allowing sustained overdrawal by NR constituents ?

- ii) What action NRLDC has taken when sustained overdrawal by NR constituents at low frequency is observed ?
- iii) Web site information of NRLDC is not like other RLDCs. If there is any specific reason, it should be mentioned.

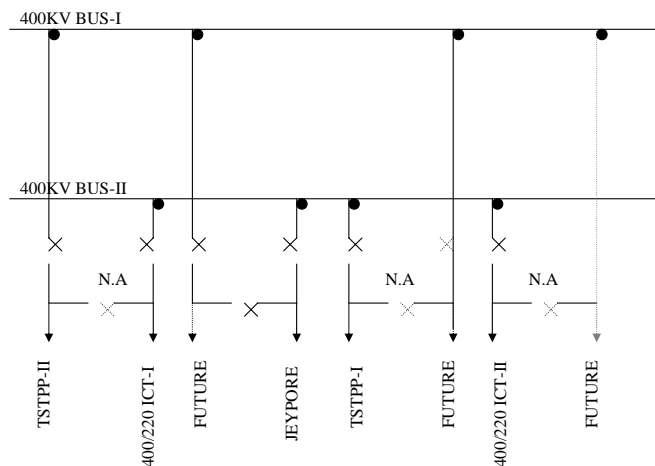
WSEDCL may elaborate the issue and members may please discuss.

**ITEM NO. 7 OPERATION CONSTRAINTS AT 400 kV MERAMUNDALI S/S
– ISSUE RAISED BY ERLDC**

The present configuration of lines/ICTs connected to 400 kV buses at Meramundali S/s are as follows:

Bus-I	Bus II
400 kV TSTPP-Meramundali-II	400 kV TSTPP-Mermundali-I 400/220 kV, 315 MVA ICT-1 400/220 kV, 315 MVA ICT-2 400 kV Meramundali-Jeypore

The tie-breakers for 400 kV TSTPP-Meramundali-II, 400/220 kV ICT-1, 400/220 kV ICT-2 and 400 kV TSTPP-Mermundali-I are not available at Meramundali end since long. As a result Bus-I & II remain synchronised only via the tie and main breaker of 400 kV Meramundali-Jeypore and any outage of these breakers leads to decoupling of the Buses. Therefore, with tripping of 400 kV Meramundali-Jeypore line, the Buses get decoupled and TSTPP-Meramundali-II becomes floating. **Switching arrangement at Meramundali S/s is given below:**



From the above diagram, the bus arrangement resembles incomplete one and half breaker scheme. In the present case, bus-I and bus-II are connected only by tie and main breaker of 400 kV Meramundali-Jeypore line and any outage of these breakers leads to decoupling of the buses. Non-availability of other tie breakers had forced the 400 kV Meramundali System to act like

single bus scheme and unless these tie breakers are provided, system security is heavily endangered which might eventually lead to system collapse.

The issue was discussed in 39th OCC meeting of ERPC held on 19.06.09. Members requested OPTCL to arrange for these tie breakers on urgent basis. Until these arrangements are made, OPTCL was requested to explore the possibility of connecting ICT-II to bus-I so that interconnectivity between bus-I and bus-II gets strengthened.

OPTCL may intimate the latest status and members may discuss.

ITEM NO.8 OPERATIONALISATION OF BALIMELA-UPPER SILERU LINE

SR is undergoing severe power crisis and both the HVDC links i.e. Talcher-Kolar (2500MW) and Gazuwaka (1000MW) link are being fully utilized. After the utilization of full capacity also, the financial market split occurred due to transmission congestion. In this regard the inter-regional export could have been increased by around 100-150 MW with the operationalisation of Balimela-Upper Sileru line. OPTCL is requested to explore the possibility of exporting power through Balimela –U.Sileru line.

The issue was discussed in 37th OCC meeting of ERPC held on 17.04.09. In the meeting, it was decided that ERLDC would organize a meeting between OPTCL & OHPC to explore the possibility of operationalisation of Balimela-Upper Sileru line.

ERLDC may inform the latest status and members may please discuss.

ITEM NO.9 400 KV SUBSTATION OF DVC AT JAMSHEDPUR WITH LILO OF ONE CIRCUIT OF 400 KV DURGAPUR (PG)-JAMSHEDPUR (PG)

DVC has proposed for setting up of 400 kV Substation at Jamshedpur with LILO of one circuit of 400 kV Durgapur (PG)-Jamshedpur (PG) to cater power supply to additional loads. PGCIL agreed in-principle to the proposal subject to agreement of constituents of Eastern Region and requested DVC to take up the matter with CEA for discussion in next Standing Committee meeting on Power System Planning in Eastern Region.

As the matter is getting delayed, DVC has requested to settle the matter as a special case in ERPC forum so that activities towards setting up a new 400 kV Substation at Jamshedpur can be expedited for meeting DVC's additional requirement of power.

The issue was discussed in 39th OCC meeting of ERPC held on 19.06.09. In the meeting, members agreed to the above proposal subject to that all associated cost for construction would be borne by DVC. DVC and PGCIL would settle the other formalities. It will not be a regional asset.

DVC may apprise the members and members may please discuss.

ITEM NO.10 STATUS OF NEW GENERATING UNITS/TRANSMISSION ELEMENTS EXPECTED TO BE COMMISSIONED DURING 2009-10

A) Generating Station:

Sl. No	Name of Project	Agency	Unit Size	Status
1	Kahalgaon STPP	NTPC	U#7 (500 MW)	Test synchronized on 31.03.09. Commercial operation not yet started.
2	Bakreswar TPS	WBPDC	U#5 (210 MW)	Test synchronized on 30.03.09. COD on 26.06.09
3	Budge-Budge TPS Extension	CESC	U#3 (250 MW)	Test synchronized on 12.07.09. Commercial operation not yet started.
4	Sterlite TPP	Sterlite Ltd. (Orissa)	U#1 (600 MW)	Expected by January'10
5	Teesta Low Dam-III HEP	NHPC	4x 33 MW	Expected by March'10
6	Chandrapura TPS	DVC	U#7 & U#8 (2x250 MW)	Expected by Dec'09

B) Transmission Elements:

Sl. No	Name of line	Expected date of Commissioning
1	Transmission system associated with Barh generation project (3x660MW) i) LILO of 400kV KhSTPP-Patna S/C (Quad) at Barh ii) 400kV Barh –Balua D/C (Quad)	Bay not ready June,2009
2	East West Corridor strengthening scheme-I i) 400kV Ranchi-Rourkela D/C ii) 400kV Rourkela-Raigarh D/C	November,2009 January,2010
3	Transmission system associated with Mejia Units 5& 6 i) 220kV Mejia- Ramgarh via Gola D/C	Gola substation is not ready
4	Transmission system associated with CTPS Unit#7 & #8 i) LILO of 220kV CTPS-Kalyaneshwari at Dhanbad ii) 220kV Dhanbad-Giridih iii) 220kV Giridh-Kodarma iv) 220kV CTPS-Pithakari (PG) bypassing Kalyaneshwari v) 220kV LILO of CTPS –MTPS at Kalyaneshwari & Ext. to Pithakari	Information not available

Sl. No	Name of line	Expected date of Commissioning
5	Transmission system associated with Sagardighi TPS i) 400kV Sagardighi – Parulia D/C	September,2009
6	Eastern Region strengthening scheme i) 400kV Durgapur-Jamshedpur 2nd circuit ii) 400kV Jamshedpur-Baripada D/C iii) 400kV Baripada –Mendhasal D/C iv) 400kV Durgapur –Maithon D/C	October,2009 -do- -do June,2010

Members may kindly note and update recent developments, if any.

ITEM NO.11 IMPLEMENTATION OF RECOMMENDATION OF THE COMMITTEE TO INQUIRE INTO CESC GRID DISTURBANCE ON 19.04.09

A system disturbance occurred in CESC command area on 19.4.09 at 16:42 Hrs after bursting of B-phase CT of 132kV Howrah-Liluah circuit IV at Howrah end. While CESC system was able to isolate itself from WBSETCL, the entire system, excepting the loads at Kasba and Titagarh, supplied radially from WBSETCL, collapsed as its all running units tripped. The total load loss of CESC was more than 1000MW and it took almost 8 hours to achieve total normalcy of CESC. However, the rest of WBSETCL and Eastern Grid was not affected by the aforesaid disturbance. Subsequently, a committee comprising of representatives from WBSETCL, CESC, ERLDC & POWERGRID was constituted by CEA on 05.05.09, pursuant to Section 73(1) of the Electricity Act 2003 under the chairmanship of Member Secretary, ERPC, to enquire the grid disturbance. The Committee has submitted its report to Secretary, CEA and members of the Committee vide letter dated 2nd July 2009 and is also available in ERPC website. The issue was discussed in the 6th Protection Co-ordination sub-Committee meeting of ERPC held on 21.07.09. Action taken by various constituents against the recommendations is indicated below:

Sl. No.	Recommendation	Action to be taken by	Action taken
1	The timer setting of the under-voltage trip feature of the auxiliary board at Budge-Budge generating station needs to be reviewed		already changed from 2 sec to 5 sec
2	Replacement of CTs in WBSETCL S/Stns where tan delta values were higher than 1.0	WBSETCL	Listed out CTs that need to be replaced
3	Incorporation of bus-bar differential protection scheme at all such tie substations of WBSETCL	WBSETCL	In the process of installing bus bar protection
4	CESC may consider a special protection scheme for forming sustainable islands viz. New Cossipore, Titagarh with matching load of North Calcutta, under such	CESC	Carrying out feasibility study for such islanding scheme

Sl. No.	Recommendation	Action to be taken by	<i>Action taken</i>
	circumstances.		
5	CESC may explore provision of df/dt relays for actuation of load shedding at suitable locations, for achievement of load generation balance	CESC	Expressed reservation about utilization of such df/dt scheme. However agreed to explore the same.
6	Adequate battery back-up in all substations of CESC	CESC	Already arranged for Jadavpur S/s
7	Checking of SOE for Howrah 220/132kV ICT-3	WBSETCL	In the process
8	Hotline communication between ERLDC and CESC	CESC	CESC was requested to utilize spare channel already existing between CESC and ERLDC for voice communication.

Members may kindly note and update recent developments, if any.

ITEM NO.12 CONSTRAINTS IN EVACUATION OF POWER FROM TENUGHAT TPS OF TVNL

The existing arrangement for evacuation of power from Tenughat TPS (2x210MW) of TVNL is through two transmission lines viz. 220 KV TTPS-Biharshariff S/C line and 2200 KV TTPS-Patratu S/C line (both 400 KV S/C line but charged at 220 KV). Whenever both the units of TVNL are operational, there is a backing down of generation at TTPS due to grid constraints. For proper evacuation of power from TTPS upgradation of TTPS switchyard to 400 KV and charging of Tenughat-Biharshariff line at 400 KV are essential.

The issue was discussed in 8th TCC meeting held on 20th November,2008 wherein TVNL had stated that cost estimate for up-gradation of 220 KV Tenughat-Biharshariff line had been prepared and tender would be floated shortly.

In the 41st OCC meeting held on 18.08.2009 Powergrid informed that requisite work at their 400 KV Biharshariff Sub-Station is under progress.

TVNL and Powergrid may apprise the members about the present status of work and members may please discuss.

COMMERCIAL MATTERS

ITEM NO.13 A) PAYMENT OF UI -- PRESENT STATUS

The status of UI payment as on 19.07.2009 as received from ERLDC is enclosed at **Annexure-I**. As per Hon'ble CERC order dated 4th June, 2008 against petition no. 54/2008 (Suo-motto) and further order dated 15.03.2009, BSEB has cleared principle outstanding dues for the year 2008-09. However, interest amount of Rs.159.51941 lakh due to delayed payment of UI charges for the year 2008-09 is yet to be paid by BSEB. In addition to this, BSEB is required to pay an interest amount of Rs.35.0247 lakh for the year 2009-10 due to delayed payment of UI charge calculated as on 31.07.2009. Thus the total payable amount by BSEB on account of interest is Rs.194.54411 lakh.

Members may please note the present UI status. In the last Commercial Sub-Committee meeting held on 25.06.2009 at ERPC, Kolkata, the proposal of adjustment of interest amount due to delayed payment of UI charges for the year 2008-09 in respect of BSEB against UI amount to be paid to BSEB from UI pool was discussed. BSEB representative agreed to furnish the consent to ERLDC in writing.

BSEB representative is requested to confirm.

B) REACTIVE ENERGY CHARGES -- PRESENT STATUS

The updated position of Receipt/Payment in the ER Reactive Pool for bills upto 26.07.2009 as received from ERLDC is indicated at **Annexure-II**.

Members may please note.

C) 'IRE POOL' ACCOUNT OF ER WITH OTHER REGIONS -- PRESENT STATUS

As received from ERLDC, settlement of IRE account with SR has taken place till 52nd Week of 2008-09 i.e. upto 29.03.09 and an amount of Rs.32974.96506 lakh has been disbursed to POWERGRID for giving transmission benefits to ER beneficiaries. Enclosed statement at **Annexure-III** shows the details of IRE disbursements and the transmission benefit given to ER beneficiaries as settled as per ER and SR IRE account.

The net IRE amount to be received from NR towards ER-NR exchange upto 26.08.06 has duly been reconciled and is Rs.11354.53007 lakh. NR has cleared all the outstanding IRE amount of Rs.11354.53007 lakh, which has already been disbursed to POWERGRID for giving transmission benefits to ER beneficiaries in proportion to the weighted average share for the corresponding years. A statement of transmission benefit to be allowed to ER beneficiaries against payment of Rs.11354.53007 lakh is shown at **Annexure-IV**.

In the last Commercial Sub-Committee meeting held on 25.06.2009 at Kolkata, it was brought to the attention of the members present by Member Secretary, ERPC that an amount of Rs.443.28 lakh has been disbursed to

POWERGRID for giving transmission credits to the ER beneficiaries. This has provided a considerable relief to the ER beneficiaries.

This is for the information of the members.

D) POOL BALANCE DUE TO CAPPING OF UI RATE FOR NTPC STATION AT ER

As received from ERLDC, ER UI pool has accrued a total pool balance of Rs.12018.24822 lakh for the year 2008-09 and Rs. 594.72556 lakh for the year 2009-10 (upto 19.07.2009) due to capping of UI of thermal ISGSs. These amounts are presently available in the ER UI pool account as pool balance due to capping.

This is for the information of members.

E) MAINTENANCE OF ACCOUNT FOR UI CHARGE, ADDITIONAL UI CHARGE, POOL BALANCE DUE TO CAPPING OF NTPC STATIONS AND INTEREST ON UI DUE TO DELAYED PAYMENT

As per Clause 9 “Unscheduled Interchange Charges Accounting” of the CERC (Unscheduled Interchange Charges and related matters) Regulations 2009, all payments on account of Unscheduled Interchange charges including the Additional Unscheduled Interchange Charges levied under these regulations and interest received on late payment thereof shall be credited to a **Fund called the “Unscheduled Interchange Pool Account Fund”**, which shall be maintained and operated in accordance with provisions of the Grid Code.

CERC vide its order no. L-7/25(5)/N/2003 dated 14.01.2008 capped the UI rate for coal, lignite and APM gas fired generating stations to 406 paise/kWh., which was further revised as 408 paise/kWh vide new regulation dated 30.03.09.

It has been informed by ERLDC that the total pool balance accumulated on account of capping is Rs.12018.24822 lakh for 2008-09. ERLDC proposed that as the amount so getting accumulated due to capping of UI rate for ISGS thermal stations and additional UI charge applicable for over drawal / under-generation at a frequency below 49.2 Hz, therefore, ERLDC may have a separate Bank Account for amount getting accumulated due to additional UI charges applicable for over drawal / under-generation at a frequency below 49.2 Hz and capping of UI rate for ISGS thermal stations.

ERLDC may further elaborate and enlighten the methodology being followed at present and to be followed in future to maintain the account(s).

Deliberations in the Commercial Sub-committee meeting held on 25.06.09

During the deliberation, it was informed by ERLDC that in all other regions separate account have already been opened for proper segregation of UI charges, pool balance, etc.

In this connection, Superintending Engineer (Comml), ERPC drew the attention of the members to the Clause 9 of the CERC (Unscheduled

Interchange Charges and related matters) Regulations 2009 wherein it has been clearly mentioned that all payment on account of Unscheduled Interchange Charges including Additional Unscheduled Interchange Charges levied under this regulation and interest received on late payment shall be credited to a fund called “Unscheduled Interchange Pool Account Fund”. He requested ERLDC to examine whether its proposal of opening separate account would be in agreement of Clause 9 of the above regulations.

After detailed deliberations, members present in the meeting authorized ERLDC to take appropriate action keeping in view the procedure being followed in other RLDCs and the provisions of CERC regulations.

ERLDC may please update the latest position.

ITEM NO.14 STEEP HIKE IN FUEL PRICE ADJUSTMENT (FPA) PRICE

A communication dated 01.07.2009 has been received by ERPC Secretariat from Chairman,ERPC & PCE-cum-Secretary, Energy & Power Department, Govt. of Sikkim, endorsing therewith the letter of Chairman, BSEB, regarding the steep rise in FPA (Copy along with enclosures given for ready reference as **Annexure-V**). This issue was raised in the 10th ERPC meeting also. In his letter dated 08.05.09 as above, Chairman, BSEB has expressed concern regarding the steep hike in the fuel price adjustment (FPA) price from December,2008 onwards due to import of coal by NTPC for their power stations in Eastern Region for which BSEB is severely constrained financially. It has been highlighted that compared to November'2008 figures, the enhancement in the energy charges bills of NTPC due to FPA have been increasing and reached as high as 89% for the months from December'2008 to March'2009.

Intimating that though BSEB is seeking information and convincing clarifications for such FPA hike from NTPC, he has proposed a common approach that could be followed by addressing the issue to the Central Commission from the point of view of all the beneficiaries in the Eastern Region through an appropriate application. It has been suggested by him that in order to seek justice and minimise litigation, Member Secretary, ERPC to file the application before the Central Commission and seek clarification on the above subject from the Commission.

Members may discuss and deliberate.

ITEM NO.15 PEAK HOURS SCHEDULING OF THERMAL POWER PLANTS (ISGS) UNDER COAL SHORTAGE CONDITION

As per Clause 21 (4) of CERC Tariff Regulation 2009

Quote

In case of fuel shortage in a thermal generating station, the generating company may propose to deliver a higher MW during peak-load hours by saving fuel during off-peak hours. The concerned Load Despatch Centre may then specify a pragmatic day-ahead schedule for the

generating station to optimally utilize its MW and energy capability, in consultation with the beneficiaries. DCi in such an event shall be taken to be equal to the maximum peak-hour ex-power plant MW schedule specified by the concerned Load Despatch Centre for that day.

Unquote

The issue regarding certifying fuel shortage, methodology of preparation of schedule during peak hours, duration of peak hours, etc were deliberated in details in the 9th Commercial Sub-Committee meeting held on 23.03.2009 and in the 9th TCC meeting held on 10.04.2009. As per the decisions in the above meetings, the issues were referred to CERC, who subsequently convened a meeting on 23.04.2009 of all RPCs and RLDCs at CERC office, New Delhi. It was indicated in the meeting by CERC that the pertinent issues need to be addressed at each RPC level separately. Accordingly, in the 38th OCC meeting held on 15.05.2009, it has been decided that for the purpose of scheduling under fuel shortage condition, peak hours for the month of June 2009 would be considered from 1830 hrs to 2130 hrs. In the 10th Commercial Sub-Committee of ERPC, this was conveyed by ERPC to the members.

ERLDC has been scheduling NTPC power stations of Eastern Region accordingly under the coal shortage conditions. As per new tariff regulations of CERC, under normal condition, NTPC declares availability for all the 96 blocks of the day. DCi for a day is taken as the average of all the 96 blocks availability of the day. Accordingly, the monthly DCi is computed as average of the daily DCi for the recovery of the fixed charge and incentive, if any. Under condition of shortage of coal NTPC declares daily energy availability in terms of MU or MWH including the maximum and minimum generation in MW that could be generated by NTPC stations in a block. RLDC gives the maximum and minimum entitlements for each beneficiaries of the stations of NTPC for each block subject to the constraints that the beneficiaries total entitlement would be limited to the allocated share based on the energy availability by the stations. Based on the requisitions received from the beneficiary of concerned NTPC stations, RLDC prepares the schedule. As per the CERC regulation “DCi in such an event shall be equal to the maximum peak hours ex-power plant MW schedule specified by the concerned Load Despatch Centre for the day.” As has already been mentioned earlier, the peak hours in the OCC meeting has been declared spanning from 1830 hrs to 2130 hrs. While preparing the REA the schedule finalized by RLDC for NTPC stations under coal shortage, the DCi is computed as average of the 12 blocks schedule from 18.30 hrs to 21.30 hrs. Fixed charge recovery of the day under coal shortage condition would depend solely on the DCi computed as above. Now, if the beneficiary constituents give higher requisition than the average during peak hours, the DCi would be more and accordingly NTPC would be in a position to recover higher fixed charges for the day by generating more than average during the peak hours. In earlier occasions, NTPC stations under coal shortage benefited from above.

However, in the month of July’09, there were instances of giving less requisition during the peak hours by the beneficiaries resulting slightly lower than average DCi for NTPC stations. In this context, it is mentioned

that ERPC secretariat has received a letter from General Manager (OS), NTPC, ERHQ, Patna addressed to Member Secretary, ERPC, copy endorsed to General Manager, ERLDC, Kolkata (copy enclosed at **Annexure-VI**).

In this connection, it is brought to the attention of the members that the scheduling methodology is not binding on the generator under coal shortage conditions. In exercising this option, if NTPC is having any problem, NTPC may declare availability as per normal methodology which will be acceptable to all the beneficiaries.

Members may please discuss.

ITEM NO.16 ADDITIONAL UI CHARGE ON ACCOUNT OF INTER-REGIONAL POWER EXCHANGE

ERPC has been issuing the weekly UI account in accordance with the Clause 7(3) of the Central Electricity Regulatory Commission (Unscheduled Interchange Charges and related matters) Regulations 2009, effective from 01.04.2009. In the UI account, ERPC has been reflecting the additional Unscheduled Interchange Charge at the rate equivalent to 40% of the UI rate corresponding to the frequency of 49.2 Hz for overdrawl / under-inject power including inter-regional transactions when the frequency is below 49.2 Hz.

The purpose of imposing 40% additional Unscheduled Interchange Charges below 49.2 Hz was to discourage and dissuade overdrawl and maintain grid stability. It was, in fact, continuation of UI only but more stringent at 49.2 Hz & below.

In consonance with this spirit, ERPC has been levying 40% additional Unscheduled Interchange Charges on its own constituents as well as other inter-regional beneficiaries like NR, WR, etc. for overdrawl / under injection below 49.2 Hz. However, same is not being followed in other regions for inter-regional transfers and they have requested ERPC to discontinue this additional Unscheduled Interchange Charges for inter-regional transfers.

It has been stipulated in the Clause 11 of the CERC Regulation that the amount available after final settlement of the claims of Unscheduled Interchange Charges of the generating stations and the beneficiaries shall be utilized with the prior approval of the Commission for either or both of the following activities :

- a) servicing of investments of transmission scheme of strategic importance ;
- b) providing ancillary services.

If the other regions overdraw power below 49.2 Hz and retain additional Unscheduled Interchange Charges instead of transferring to the Eastern Region UI Pool account, ER would be double sufferer by -

- (i) losing benefit of its own power;

- (ii) non-availability of extra amount for undertaking strengthening of inter-State transmission network of strategic importance in the Eastern Region.

It is understood that NR & WR are charging 40% additional Unscheduled Interchange Charges from their own defaulting constituents. However, they are unwilling to pay the same to exporting agency, i.e. ER. ERPC failed to understand this dichotomy. The very argument that additional Unscheduled Interchange Charges is not payable in case of inter-regional transactions defeats the very spirit and purpose of this notification.

ERPC vide letter no. ERPC/COM-II/UI Corr/2009/3501-11 dated 17.06.09 has already been taken up the issue with CERC for clarification.

This is for the information of members.

Deliberations in the Commercial Sub-committee meeting held on 25.06.09

Superintending Engineer (Comml), ERPC explained in details the rationale of imposing 40% Additional Unscheduled Interchange Charges below 49.2 Hz for inter-regional transactions also. He also brought the attention of the members to the letter written by WRPC. He further informed that ERPC is expecting clarification from CERC in this matter.

POWERGRID representative present in the meeting endorsed the action taken by ERPC and emphasised that the Additional Unscheduled Interchange Charges should also be applicable for inter-regional transactions in accordance with the CERC notification dated 30.03.2009. There was no objection from any quarter against imposing 40% of Additional Unscheduled Interchange Charges below 49.2 Hz for inter-regional transactions by ERPC.

Members may please discuss.

ITEM NO.17 ALLOCATION OF POWER FROM SUBANSIRI HYDRO ELECTRIC PROJECT(2000 MW) AND KAMENG HYDRO ELECTRIC PROJECT (600 MW) IN ARUNACHAL PRADESH

MoP / GoI in their letter vide No. 11/1/2002-DO (NHPC) dated 14.07.2009 communicated allocation of power in favour of NER, NR and WR from the under-mentioned power stations as indicated below :

From Subansiri HE Project (2000 MW)

<u>Sl.No.</u>	<u>Regions</u>	<u>% age Allocation</u>	<u>Equivalent Power in MW</u>
1.	Power alloc. to NER incl. free power to home state (13%) & Unallocated share at the disposal of Centre to be alloc. to NE states (15 %)	50	1000

<u>Sl.No.</u>	<u>Regions</u>	<u>% age Allocation</u>	<u>Equivalent Power in MW</u>
2.	Northern Region	25	500
3.	Western region	25	500

From Kameng HE Project (600 MW)

<u>Sl.No.</u>	<u>Regions</u>	<u>% age Allocation</u>	<u>Equivalent Power in MW</u>
1.	Power alloc. to NER incl. free power to home state (12%) & Unallocated share at the disposal of Centre to be alloc. to NE states (15 %)	50	300
2.	Northern Region	25	150
3.	Western region	25	150

Members may please note.

ITEM NO.18 INCENTIVE ENERGY STATEMENT FOR NTPC STATIONS IN EASTERN REGION FOR THE PERIOD APRIL, 2008 TO MARCH, 2009.

The provisional incentive energy statement for 2008-09 i.e. for the period from April'08 to March'09 in respect of NTPC stations in ER was issued by ERPC Secretariat vide letter No. ERPC/COM-I/REA/2009/3611-43 dated 24/25.06.09. The Incentive Energy of NTPC stations in ER payable by the beneficiaries for the year 2008-09 were as under :

STATION	PERIOD	INCENTIVE ENERGY (MWH)
Farakka STPS Stage - I	APRIL'08 TO MAR'09	0.00
Kahalgaon STPS Stage - I	APRIL'08 TO MAR'09	0.00
Kahalgaon STPS Stage - II	APRIL'08 TO MAR'09	0.00
Talcher STPS Stage - I	APRIL'08 TO MAR'09	685190.93

Members may please note.

ITEM NO.19 REQUIREMENT OF SEMs UPTO 2012 (11TH PLAN PERIOD)

The proposal for requirement of Special Energy Meters (SEMs), for new power system elements covered under 11th Plan Period (up to 2012), was prepared and circulated by ERLDC in the OCC meeting held on 17th May,2009 at ERPC, Kolkata. ERLDC had forwarded the requirement of 605 Nos. of SEMs (550 Nos. as per list with 10 % Spare Meters i.e. Requirement of Total No. of SEMs as 605 Nos.) to Powergrid for initiating necessary action for procurement. In addition, as per ERLDC / Powergrid, depending upon locations of meters to be installed as above, 100 Nos. of DCDs are also required to be procured. Accordingly, Powergrid intimated

that as per earlier purchase order, the unit cost of SEM and DCD are Rs. 27,000/- and Rs. 45,000/- respectively. Thus, the total cost involvement estimated towards purchase of approximately, 605 Nos.of SEMs and 100 Nos. of DCDs would be around Rs. 2. 04 Crore.

The issue was also placed by ERLDC / Powergrid in the 10th Commercial Sub-Committee meeting held on Kolkata for necessary approval after deliberation.

In the said Commercial Sub-Committee meeting, after taking into account the requirement of SEMs for the upcoming projects in Sikkim, it was decided that 650 nos (subject to actual) SEMs and 100 nos. DCD (not Laptop) would be procured by POWERGRID at an estimated cost of Rs.3.5 crore [at the estimated rate of Rs.27,000/- for 1 no. SEM and Rs.45,000/- for 1 no. DCD]. The total cost would be apportioned among the beneficiary constituents of Eastern Region in proportion to the share allocation for the month in which the proposal is approved in the ERPC meeting. Against the POWERGRID's proposal of levying 15% as overhead charges, it was decided, on request from the beneficiaries, that the charges shall be limited to 10%.

It was further decided that ERLDC would circulate the revised list indicating therein the constituent-wise requirement of SEMs and DCDs.

The issue is placed before TCC members for their agreement on the above issue along with confirming the total estimated cost. ERLDC is requested to submit the list regarding constituent wise requirement of SEMs and DCDs.

ITEM NO.20 OPTIONS FOR PROVISION OF ADDITIONAL BAY/BREAKER FACILITY AGAINST 400KV MALDA-FARAKKA FEEDER-I AT MALDA S/S

The issue raised by Powergrid on the above subject is described below :

400 KV Malda-Farakka Ckt-I bay is running on single breaker (ABB SF6 Circuit Breaker diverted from Durgapur) without any provision to transfer the bay to TBC which has been constructed in the year 2002. At that time due to space constraints transfer bay was not constructed. The power flow through this line has increased up to SIL level during winter season. This makes this feeder a critical one from system stability point of view. Outage of the only available Circuit Breaker for 400 KV Farakka-Malda-I on account of maintenance, break down will put considerable operational problem and may jeopardize the grid.

Looking in to the criticality of the matter, an expert committee has visited site and explore various option to provide transfer facility through TBC or additional/redundant breaker facility. The committee after comprehensive study of the Physical layout and other consideration has submitted their report wherein they have recommended for providing additional bay by relocation of some of the existing equipment/structures.

The matter was discussed in 39th OCC meeting of ERPC wherein in principle agreement for installation of additional bay/breaker facility against 400 KV Malda-Farakka Feeder-I at Malda S/S have been agreed by ER constituents. The approximate cost for commissioning of one no bay at Malda S/S will be Rs. 2 crore. The expenditure will be pooled with regional transmission charges.

The issue was placed in the 10th Commercial Sub-Committee meeting for deliberation and agreement on the proposal, to which members agreed.

Members may please discuss.

ITEM NO.21 CERC APPROACH PAPER ON FORMULATING PRICING METHODOLOGY FOR INTER-STATE TRANSMISSION

The Tariff Policy notified by the Central Government under the provisions of the Electricity Act, 2003 requires the CERC to develop the national transmission tariff framework which should be sensitive to distance, direction and related to quantum of power flow. Accordingly, CERC has prepared an approach paper on formulating pricing methodology for inter-state transmission. This paper was circulated on 15th May, 2009 for inviting comments/suggestions/objections.

In order to develop a clear understanding of the proposed methodology, Member (Technical) and Chief (Engineering), CERC along the Consultants held a Seminar at ERPC, Kolkata on 26.06.2009 in which detailed deliberations on the proposed approach paper took place. Almost all the constituents of ERPC attended the Seminar. During the course of deliberations many shortcomings of the proposed approach were brought to the attention of CERC. Number of suggestions were also given to CERC.

Further, CERC held oral hearing on above on 29th July 2009 at CERC office, New Delhi. Many constituents from Eastern Region also attended the hearing. Since the proposed approach paper would bring about a dramatic change in the pricing methodology for inter-state transmission, it is requested that all ER constituents may kept themselves well aware of the development vis-à-vis the impact of the changes on themselves.

This is for information of the members.

ITEM NO.22 A) AUGMENTATION OF TRANSFORMATION CAPACITY OF 220/132 kV BIRPARA SUB-STATION OF POWERGRID – ISSUE RAISED BY POWER GRID

Presently, the transformation capacity of 220/132kV Birpara Sub-Station is 150MVA (1x50 MVA & 1x 100MVA). From the load pattern of both ICTs, it has been observed that the power flow through both the transformers exceeds more than 90-100 MW during peak hours and it is clear that with the same transformation capacity of 150MVA available at Birpara, and considering the rate of rise of demand per year (more than 20%), the full load of WBSETCL cannot be met in near future. Further, due to non-availability of alternate source at Birpara, WBSETCL has to resort

load shedding in case of outage any one of ICT. As such the augmentation of transformation capacity at Birpara Sub-Station is required immediately to have sufficient margin to take care of load growth in future.

The issue was discussed in 37th OCC meeting of ERPC held on 17.04.09. Members suggested that 50 MVA transformer may be replaced by (1X160MVA) transformer, alternatively 3rd transformer of (1x160MVA) capacity may be installed at Birpara Sub-Station. WBSETCL representative agreed in principle for augmentation of transformation capacity of 220/132 KV Birpara Sub-Station.

B) AUGMENTATION OF TRANSFORMATION CAPACITY OF 220/132 kV SILIGURI SUB-STATION OF POWERGRID – ISSUE RAISED BY POWER GRID

Presently, only one no. 220/132kV 100MVA ICT is available at Siliguri Sub-Station of Powergrid. It has been observed that during lean period of Hydro generation i.e. whenever Rangit HPS is out of service, the power flow through the transformer exceeds more than 80MW during peak hours and it is clear, that with the same transformation capacity of 100MVA available at Siliguri and with the same load pattern, it will be difficult to cater the load through this transformer. As such the augmentation of transformation capacity at Siliguri Sub-Station is required immediately to have sufficient margin to take care of load growth in future.

The issue was discussed in 37th OCC meeting of ERPC held on 17.04.09. Members suggested that 2nd transformer of 1x160MVA may be installed at Siliguri Sub-Station. WBSETCL representative agreed in principle for augmentation of transformation capacity of 220/132 kV Siliguri Sub-Station.

Powergrid stated that the approximate cost for procurement, installation and commissioning of 2 nos. 160 MVA ICTs would be Rs.20 crore.

The above issues were further discussed in the 10th Commercial Sub-Committee Meeting held on 25.06.2009 and members noted the same.

Members may like to discuss and agree to the proposals. In case of agreement to the above proposals, WBSETCL is to give consent for bearing the associated cost as above.

ITEM NO.23 COMMERCIAL AGREEMENT FOR IMPLEMENTATION OF FIBRE OPTIC NETWORK IN LIEU OF EXISTING MICROWAVE NETWORK – ISSUE RAISED BY POWERGRID

Powergrid have submitted that during the 10th ERPC meeting, the establishment of Fibre Optic Network in lieu of existing Microwave links was approved by ERPC. Powergrid have already initiated process of investment approval and procurement for the Fibre Optic Communication Scheme.

Powergrid have proposed that the project shall become “part of Commercial Agreement” already signed by Powergrid with respective constituents for ER-ULDC Project and the tariff shall be as determined by CERC.

Powergrid may further clarify the matter and members may please discuss.

ITEM NO.24 ANY OTHER ITEM WITH PERMISSION OF THE CHAIR

Annexure- I

SUMMARY OF UI RECEIPT AND PAYMENT STATUS

BILL UPTO 19.07.2009 (Week - 16 of 2009 - 10)
Last Payment Disbursement Date - 07.08.09

Figures in Rs. Lakhs

CONSTITUENTS	Receivable	Received	Payable	Paid	Outstanding
WR	0.00000	0.00000	46920.52522	46919.50797	-1.01725
SR	1500.40153	1500.40153	4874.27335	4874.27335	0.00000
NER	489.82397	363.95846	5490.49087	5490.49087	125.86551
NR	49336.73668	48084.05385	0.00000	0.00000	1252.68283
BSEB	3307.43971	2511.41167	2806.88851	2806.47056	795.61009
JSEB	998.89702	990.43314	5198.05267	5270.28651	80.69772
DVC	16570.32636	17660.37771	0.00000	0.00000	-1090.05135
GRIDCO	12208.48363	12220.93124	116.77343	116.77343	-12.44761
WBSETCL	1632.27786	1448.98042	10733.85553	10687.66617	137.10808
SIKKIM	419.40871	419.37495	2064.52948	1784.99974	-279.49598
NTPC	0.00000	0.00000	2307.53899	1992.89904	-314.63995
NHPC	0.00000	0.00000	895.95446	858.02665	-37.92781
Pool Balance	0.00000	0.00000	594.72556	0.00000	-594.72556
Additional UI charge	0.00000	0.00000	6111.98878	1789.81613	-4322.17265
Transfer to IRE	0.00000	0.00000	1952.46163	2133.91924	181.45761
TOTAL	86463.79547	85199.92297	90068.05848	84725.12966	

% Realization 98.54 As on 07.08.09

Receivable:	Receivable by ER POOL	Payable	Payable by ER POOL
Received	Received by ER POOL	Paid	Paid by ER POOL
"- ve" Payable by ER pool		"+ ve" Receivable by ER pool	

STATUS OF REACTIVE CHARGES

RECEIVABLE IN ER POOL AS PER PUBLISHED A/C UPTO 26.07.09 (2009-10)
AS ON 10.08.09

CONSTITUENT	AMOUNT RECEIVABLE IN THE POOL (Rs.)	AMOUNT RECEIVED IN THE POOL (Rs.)	OUTSTANDING (Rs.)
WBSETCL	3320742	3320742	0
TOTAL	3320742	3320742	0

Amount available in Reactive A/C as on :
10.08.09

13971199

Annexure- III & IV

Statement of Transmission Benefit for ER Beneficiaries towards ER-SR IRE
(TOTAL ER - SR IRE SETTLEMENT AMOUNT RS 32974.96506 LACS TILL 10.08.09)
Break up of disbursed amount of Rs 32974.96506 Lacs considering bill up to 29.03.09

Figures in Rs.Lac

DATE	BSEB	JSEB	DVC	GRIDCO	SIKKIM	WBSETCL	TOTAL
2008-09							
2-Sep-08	1995.65447	554.18100	248.41879	1208.24231	211.50073	1556.76663	5774.76393
14-Nov-08	3014.32124	820.13328	365.14231	1803.51363	316.31827	2315.88018	8635.30891
23-Dec-08	1148.36219	323.38365	134.52644	673.11957	117.37729	925.42097	3322.19011
21-Apr-09	4451.53057	1106.16741	497.76817	2519.79505	431.48568	3496.76467	12503.51155
16-Jun-09	976.39817	272.22076	105.35475	540.04511	92.78186	752.38991	2739.19056
TOTAL	11586.26663	3076.08610	1351.21046	6744.71567	1169.46383	9047.22236	32974.96506

Statement of Transmission Benefit for ER Beneficiaries towards ER-NR IRE
TOTAL IRE RECEIVABLE FROM NR IS 11354.53007 LACS

DATE	BSEB	JSEB	DVC	GRIDCO	SIKKIM	WBSETCL	TOTAL
2003-04							
8-Jun-04	17.63283	2.30265	4.58601	13.53857	1.37925	15.42960	54.86891
16-Nov-06	168.9531015	22.06547694	43.94168603	129.722082	13.2172049	147.8444787	525.74403
Sub Total	186.58593	24.36813	48.52770	143.26066	14.59645	163.27408	580.61294
2004-05							
10-Nov-08	10.51962	5.16489	2.40856	7.52967	0.79853	8.60209	35.02336
16-Nov-06	248.2453203	121.8828602	56.83789679	177.687646	18.8440315	202.9948499	826.49261
18-Dec-06	64.51379	31.67482	14.77099	46.17732	4.89717	52.75413	214.78822
27-Feb-09	675.81000	331.80750	154.73250	483.72750	51.30000	552.62250	2250.00000
18-Mar-09	44.46448	21.83106	10.18052	31.82653	3.37525	36.35944	148.03728
Sub Total	1043.55321	512.36113	238.93047	746.94867	79.21498	853.33301	3474.34147
2005-06							
18-Mar-09	906.26362	228.71252	105.11929	589.60475	62.96750	709.29504	2601.96272
16-Apr-09	951.20880	240.05528	110.33257	618.84558	66.09030	744.47178	2731.00431
Sub Total	1857.47242	468.76780	215.45187	1208.45033	129.05780	1453.76681	5332.96703
2006-07							
16-Mar-09	257.04815	58.77790	27.68852	155.69852	17.06896	202.71364	718.99569
6-May-09	446.03410	101.99236	48.04558	270.17058	29.61833	351.75199	1247.61294
Sub Total	703.08225	160.77026	75.73410	425.86910	46.68729	554.46563	1966.60863
Total	3790.69380	1166.26731	578.64413	2524.52876	269.55653	3024.83954	11354.53007

/ COPY /

EPABX : 03592-222916

03592-202028

FAX: 03592-202927

GOVERNMENT OF SIKKIM
ENERGY & POWER DEPARTMENT
KAZI ROAD, GANGTOK-737101

No. 99/ACE/SLDC/2004/62

Date: 1/7/2009

To

The Member Secretary
Eastern Regional Power Committee
14, Golf Club Road, Tollygunge
Kolkata-700 033

Sub: Steep Hike in the Fuel Price Adjustment (FPA) Price

Sir,

Chairman, Bihar State Electricity Board, Patna vide his enclosed letter no. 827/Com/Misc-1038 dated 08.05.2009 has raised the issue of steep hike in FPA price by NTPC. The matter had been discussed in the 10th ERPC meeting.

You may like to go through the same and if found suitable may like to take up the case before the CERC.

Thanking you,

Yours faithfully,

Encl: as stated

Sd/-
(P. Wangchen)
Chairman (ERPC) / PCE cum Secretary

Bihar State Electricity Board
Vidyut Bhawan, Bailey Road
Patna-800 021

No. 827
Com/Misc-1038/04-05

Dated 08/05/2009

To,
The Chairperson
ERPC & Secretary
Energy & Power Department,
Government of Sikkim
Gangtok, Sikkim-737101.

Sub: Steep hike in the Fuel Price Adjustment (FPA) price.

Sir,

The steep hike in the Fuel Price Adjustment (FPA) from December, 2008 onwards owing to the import of coal by NTPC for their power stations in the Eastern Region has put severe financial constraint on BSEB. The increase in the energy charges on account of FPA during the month of December, 2008 for the generating stations of NTPC in the Eastern Region have been ranging from 42% to 89% in comparison to the previous month's energy charges. Similar trends have also been observed in the months of January, February and March 2009 and there seems to be no relief from such huge increase in the energy charges. A complete details of increase in the energy charges of all the generating stations of NTPC for a period from December, 2008 to March, 2009 vis-à-vis November, 2008 is indicated in the Table-I.

The subject matter was discussed in the last 9th TCC and 10th ERPC meeting held on 10.04.2009 and 11.04.2009 at Port Blair (Andaman) and was also be taken up in the next OCC meeting of the ERPC.

2. In the mean time, BSEB has taken up the matter with the Executive Director, ER-I, NTPC Ltd, Patna seeking information and convincing clarifications for such a huge increase. A copy of the said letter with a copy to Member Secretary, ERPC is enclosed as Annexure-'B' for ready reference.

3. The adjustment of rate of energy charges (REC) on account of variation in price or heat value of fuels are dealt as per clause 22(iii) of the Central Electricity Regulatory Commission (Terms and Condition of Tariff) Regulations, 2004. The clause is reproduced as under :

“Initially, Gross Calorific Value of coal/lignite or gas or liquid fuel shall be taken as per actuals of the preceding three months. Any variation shall be adjusted on month to month basis on the basis of Gross Calorific Value of coal/lignite or gas or liquid fuel received and burnt and landed cost incurred by the generating company for procurement of coal/lignite or gas or liquid fuel, as the case may be.

-: 2 :-

No separate petition need to be filed with the Commission for fuel price adjustment. In case of any dispute, an appropriate application in accordance with Central Electricity Regulatory Commission (Conduct of Business) Regulations, 1999, as amended from time to time or any statutory enactment thereof, shall be made before the Commission.”

The FPA claimed by the NTPC is huge. The above clause is silent in respect of many issues which need to be clarified by the Central Commission. These issues are :

- i) Whether such a huge FPA can be claimed by NTPC without routing through the Central Commission. The provision for not routing the increase through the Central Commission may be justified when the increase is marginal and routine in nature. Further the letter and spirit of the FPA provision may not thought of such impact of imported coal on price.
- ii) It is incumbent on the NTPC to supply all the information and justify the increase in the energy charges on account of FPA in their monthly bill and provide all the relevant information to the beneficiaries especially when the increase is not vetted by the Commission.
- iii) NTPC in their oral submission in the ERPC had stated that the blending of imported high calorific value coal is required to be limited to 15% owing to the constraint in their Boiler design. Under such situation, such a huge hike is unthinkable.
- iv) It should be recognized that almost all Utilities are functioning under the regulatory environment it is simply not possible to convince the State regulator to accept such huge increase in the FPA especially when the same is neither vetted by the Central Commission nor the BSEB is in a position to absorb the financial impact.

Under such circumstances, all the beneficiaries of the Central Sector generation in the Eastern Region can raise the dispute before the Central Commission through an appropriate application. To seek the justice and also to minimize the litigation, it is proposed that the Member Secretary, ERPC may file the application before the Central Commission and seek the clarification on the above subject from the Commission.

Encl: As above

Yours faithfully,

Sd/-
(Swapan Mukherjee)
Chairman

ANNEXURE - 'B'

**Bihar State Electricity Board, Patna
(Department of Transmission O&M)**

No. Com/Misc-1038/04-05/724

Date: 16.04.2009

From:

R.P. Choudhary
Chief Engineer
Trans (O&M)

To

The Regional Executive Director, ER-I
NTPC Ltd
Lok Nayak Jaiprakash Bhawan
Dak Bunglow Road, Patna-800 001.

Subject: Steep rise in energy charges of the NTPC power station in ER w.e.f. December 2008 onwards.

**Reference: 1. Our letter Com.Misc-1038/04-05-117 dated 16-01-2009
2. Letter No. 01:CD:451 dated 29-01-2009 of GM I/C (Commercial),
NTPC, New Delhi**

Sir,

Kindly recall the discussion held in 9th TCC & 10th ERPC meeting held at Portblair on 10th & 11th April 2009 on the issue of steep hike in FPA in the NTPC energy bill for the month December'08 to March 2009. The increase in the energy charges were also shown in power point projection during the meeting. The same is also annexed as Table-1 & Table-II for kind reference in this regard.

The sudden and sharp increase in the power purchase bill on account of FPA owing to imported coal w.e.f. December 2008 to March 2009 has affected BSEB adversely as the power purchase bill has gone up by more than 40% during the said period. It may not be out of place to mention that financial implication owing to import of coal were not brought into the notice of the beneficiaries prior to import of coal. Steep hike in energy charges bill owing to coal import in as a shock directly in December 2008 main bill.

However, inspite of all handicaps and hardship faced by BSEB, it has made the payment in full of the NTPC bills for the said months under protest in the larger interest of better system operation of the Eastern Region.

You are aware BSEB is also a regulated entity. It will be extremely difficult if not impossible to convince the regulator to pass on such a huge increase of 40% to 90% in energy charges in tariff to the end consumers immediately.

BSEB needs satisfactory clarification from NTPC for steep hike in the energy charges bill w.e.f. December 2008 in order to place the matter before the regulator. In the aforesaid meeting NTPC have assured of giving details of different queries to be made by BSEB in this regard. In view of the above, it is requested to furnish the following information at the earliest :-

1. CIL coal field from where NTPC power stations in ER received indigenous coal for FSTPS, KhSTPS I & II and TSTPS.
2. Agreement entered between CIL and NTPC for supply of quantity of indigenous coal to the each NTPC power station in ER from the linked mines and from other mines.
3. Price of the indigenous coal in Rs./MT.
4. Heat rate of the indigenous coal in Kcal/Kwh supplied at the respective power station of NTPC in ER during the period 2008-09.
5. Calorific value of indigenous coal in Kcal/Kg at the respective power station of NTPC in ER during the period 2008-09.
6. Landed cost of indigenous coal at the respective power station of NTPC in ER during 2008-09.
7. Monthwise imported coal received in each STPS of NTPC in ER for 2008-09 in MT.
8. Place from where imported coal being purchase.
9. Price of the imported coal in US Dollar/MT and Rs/MT for 2008-09.
10. Landed cost of imported coal from purchase place to sea port in India.
11. Landed cost of imported coal from sea port in India to respective STPS of NTPC in ER.
12. Net landed cost of imported coal to respective STPS of NTPC in ER.
13. % of blending of imported coal with indigenous coal at respective STPS of NTPC in ER.
14. Heat rate of the imported coal in Kcal/Kwh for the period 2008-09.
15. Calorific value of imported coal in Kcal/Kwh for the period 2008-09.
16. Whether import of coal was made for TSTPS stage II, NR, WR and SR during the period December 2008 to March 2009, if yes, please furnish the monthwise detail for December 2008 to March 2009.
17. FPA claimed by NTPC on account of imported coal during the period 2008-09 for TSTPS-II and NTPC power station in NR, WR and SR.
18. Whether NTPC has agreement for supply of indigenous coal to the respective STPS of NTPC in ER from the linked/other mines corresponding to target availability as per CERC norms.

Looking forward for your kind cooperation in this regard.

With regard.

Encl: As above

Yours faithfully,

Sd/-
(R.P. Choudhary)
Chief Engineer Trans. (O&M)

Table – 1**Sudden increase in the Energy charges bill due to steep hike in FPA on account of coal import by NTPC**

Sl. No.	Description	Energy charges (in Rs/Kwh including FPA)				% increase in the Energy charges including FPA vis-à-vis November 2008			
		FSTPS	TSTPS	KhSTP-I	KhSTPS-II	FSTPS	TSTPS	KhSTP-I	KhSTPS-II
1.	Energy charges in the month of November 2008	Rs.1.43	Rs.0.88	Rs.1.11	Rs.1.07				
2.	Energy charges in the month of December 2008	Rs.2.03	Rs.1.32	Rs.2.09	Rs.2.02	42	50	88	89
3.	Energy charges in the month of January, 2009	Rs.1.92	Rs.1.24	Rs.1.87	Rs.1.77	34	41	68	65
4.	Energy charges in the month of February, 2009	Rs.2.09	Rs.1.11	Rs.1.81	Rs.1.66	46	26	63	55
5.	Energy charges in the month of March, 2009	Rs.2.57	Rs.1.27	Rs.2.16	Rs.1.93	80	44	95	80

Table – II

Additional amount claimed by NTPC from BSEB towards Energy charges due to variation in FPA on account of import of coal in the month of March, 2009 vis-à-vis the FPA claimed by NTPC for the month of November 2008.

Particulars	FSTPS	TSTPS	KhSTPS-I	KhSTPS-II	TOTAL
Amount claimed by NTPC	Rs.27.62 Crs	Rs.10.20 Crs	Rs.15.41 Crs	Rs.3.70 Crs	Rs.56.93 Crs

/ COPY /

ANNEXURE – VI
(Page 1 / 2)

NTPC LIMITED
EASTERN REGION HEADQUARTERS, PATNA

REF: 041:OSER:

DATE: 07/08/2009

FAX MESSAGE

TO:

THE MEMBER SECRETARY
ERPC, 14 GOLF CLUB ROAD
TOLLYGUNGE
KOLKATA-700 033

FAX NO. 033-24171358
033-24221802

RPT : GM, ERLDC, KOLKATA

SUB: DISCREPANCY IN REA FOR THE MONTH OF JULY 09

THIS IS WITH REFERENCE TO REA OF KhSTPP STAGE I & STAGE II ISSUED BY ERPC FOR THE MONTH JULY 2009. AS PER REA AVERAGE DC (PAFM) FOR THE MONTH IS 73.81% & 52.15% FOR KAHALGAON STAGE I & STAGE II RESPECTIVELY WHILE AS PER STATION DECLARATION, AVERAGE DC (PAFM) FOR THE MONTH IS 74.18% & 52.34% FOR KAHALGAON STAGE I & STAGE II RESPECTIVELY. DISCREPANCY IS DUE TO CALCULATION OF DC_i FOR DATES WHEN STATION HAD GIVEN DC UNDER FUEL SHORTAGE CONDITION (CALCULATION SHEET IS ATTACHED HEREWITH). AS PER REA EVEN SG FOR THE MONTH IS MORE THAN DC (PAFM). CLAUSE NO. 21.4 OF CERC TARIFF NOTIFICATION 2009 SAYS THAT ISGS MAY PROPOSE TO DELIVER HIGHER MW DURING PER LOAD HOURS BY SAVING FUEL DURING OFF PEAK HOURS. IT HAS BEEN OBSERVED THAT STATIONS ARE GETTING LESS SG DURING PEAK HOURS THAN THE OFF PEAK HOURS WHICH DEFEATS THE VERY PURPOSE OF CLAUSE NO. 21.4. IT IS REQUESTED THAT ERPC MAY LOOK INTO THE MATTER & ENSURE THAT AT ANY CIRCUMSTANCES OUR DC_i SHOULD NOT BE LESS THAN THE DC IN MWH DECLARED BY OUR STATION AND ACCORDINGLY REVISED REA MAY PLEASE BE ISSUED.

SD/-

(P.C. KUMBHAJ)
GENERAL MANAGER (OS)

DC Declaration by KhSTPP Stage-I & II under coal shortage for the month of July 2009

KhSTPP – I

Date	DC declaration by the Station				As per ERLDC				As per REA			
	MU	Max. MW	Min. MW	EAF (%)	SG (MU)	Max. MW for day	Min. MW for day	Max. MW for PK hrs.	Avg. MWH for PK hrs	DCi	EAF (%)	SG (MU)
09/07/2009	13.68	720	540	74.57	13.6595	569.2776	569.1186	569.2776	6831.3	13.6627	74.47	13.6595
12/07/2009	13.14	600	540	71.62	13.10236	547.7738	541.17375	541.2585	6495.1	12.9902	70.81	13.10236
13/07/2009	13.14	600	540	71.62	12.87691	547.7738	500.6585	500.6585	6007.9	12.0158	65.50	12.87691
14/07/2009	13.14	600	540	71.62	12.92941	547.7738	518.3738	541.2585	6495.1	12.9902	70.81	12.92941
21/07/2009	16.23	720	540	88.47	16.23	677.5912	669.5439	669.5439	8034.5	16.0691	87.59	16.23
22/07/2009	16.23	720	540	88.47	16.23	677.5912	669.5439	669.5439	8034.5	16.0691	87.59	16.23
23/07/2009	16.32	720	540	88.96	16.3200	681.4112	672.9460	672.9460	8075.4	16.1507	88.04	16.3200
24/07/2009	16.32	720	540	88.96	16.3200	681.4112	672.9460	672.9460	8075.4	16.1507	88.04	16.3200
July'09 Total	421.8507			74.18	420.958					419.7492	73.81	420.9582

KhSTPP – II

Date	DC declaration by the Station				As per ERLDC				As per REA			
	MU	Max. MW	Min. MW	EAF (%)	SG (MU)	Max. MW for day	Min. MW for day	Max. MW for PK hrs.	Avg. MWH for PK hrs	DCi	EAF (%)	SG (MU)
13/07/2009	15.855	700	655	70.655	15.53105	660.625	605.925	605.925	7271.1	14.5422	64.80	15.53105
July'09 Total	364.0859			52.34	362.873					362.7731	52.15	362.873